


Wain
HOMES

A man with a beard, wearing a pink sweater and a yellow and green striped apron, is standing in a kitchen. He is shaking his hands, causing a large amount of white flour to fall through the air around him. In the foreground, there is a wooden rolling pin, a large piece of dough on a floured surface, and some fresh vegetables including tomatoes and green herbs. The background shows kitchen cabinets and a stove.

A place that lets you be you.
That says everything about you.
That feels good, feels right.
Where life can be beautifully imperfect.
And you love every moment of it.

YOUR KIND OF *perfect*

CHARTER WALK



Wain Homes Policy is continuous product and specification development. Plans and images are shown for illustrative purposes only and the final layout and development may vary from that shown. Every effort has been made to ensure the accuracy of the information provided in this leaflet at the date of publication but it may be subject to change without notice. Please consult with our Sales Executive to obtain the current specification. You should take appropriate steps to verify any information upon which you wish to rely. These particulars are intended for guidance only and their accuracy is not guaranteed. They do not constitute a contract, part of a contract or warranty. (January 2022)

CHARTER WALK SPECIFICATION

KITCHENS

- Glass Splashback
- Stainless Electric Oven and Gas Hob, Extractor over (as per plot specific working drawing)
- Worktop and Upstand
- Soft Closers and Pelmet
- Downlighters
- Under Unit Lighting
- All Appliances as per Kitchen Layout
- USB Charger Socket
- Brushed Chrome Switches/Sockets

BATHROOMS

- Contemporary White Sanitary Ware
- Chrome Bath Pillar Taps
- Shaver Socket to Bathroom and En-suite

WALL TILING

Cloaks

- Wall Tiling to splashback only in Cloaks

Bathroom

- Half Height Tiling throughout
- Full Height to Shower Cubicle
- Full Height Tiling around Bath if Shower over
- Tiled Window Cills where applicable

En-Suites

- Full Height Tiling to Shower Cubicle and Half Height to all Other Walls
- Tiled Window Cills where applicable

HEATING SYSTEM

- Gas Central Heating to all Properties

INTERNAL FEATURES

- Staircase White, Oak Handrail
- Switches and Sockets White to all Rooms except Kitchen
- Wain Home Cream Painted Walls
- BT & TV points Lounge and Bedroom 1
- Data Point Bed 1
- Vertical Grooved Internal Doors, White Gloss
- Smoke Detectors
- Pencil Round Skirting Boards and Architraves
- Flat Finish Ceilings to all Rooms in White Matt

EXTERNAL FEATURES

- UPVC Fascia and Soffit Boards
- PVCu Double Glazed to all Windows (except Garage) to suit external elevations
- French Doors and Paved Patio where applicable
- GRP Front/Rear Doors
- Electric Front Door Bell
- 1.8m Palisade Fencing
- Division Fencing 1.8m Palisade
- External Lights to be fitted Front and Rear Elevations, Energy Efficient Fittings
- Paving Slab Paths to serve Front and Side Entrances as per the External Working Drawings
- UPVC rainwater goods

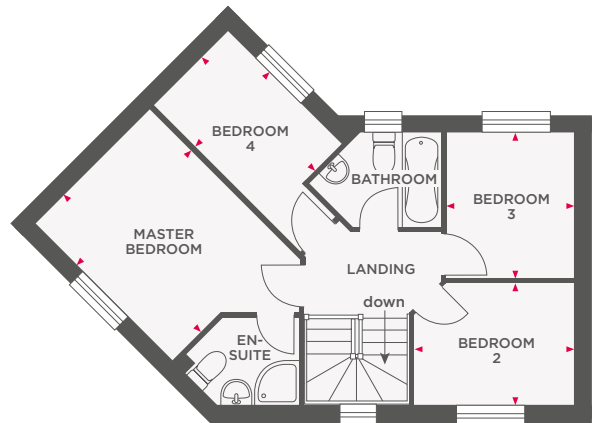
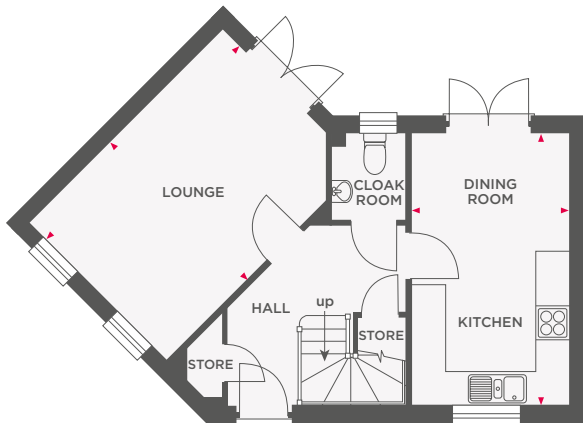
WARRANTIES

- NHBC Ten Year Cover



THE DALTON

4 BEDROOM HOME



Lounge	4960 x 3500	16'3" x 11'5"
Kitchen/Dining Room	4960 x 2850	16'3" x 9'4"

Master Bedroom	3554 x 2927	11'7" x 9'7"
Bedroom 2	2912 x 2228	9'6" x 7'4"
Bedroom 3	2645 x 2327	8'7" x 7'7"
Bedroom 4	2935 x 1945	9'7" x 6'4"



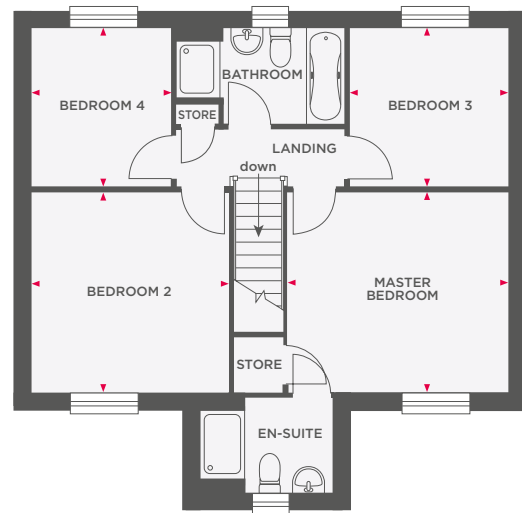
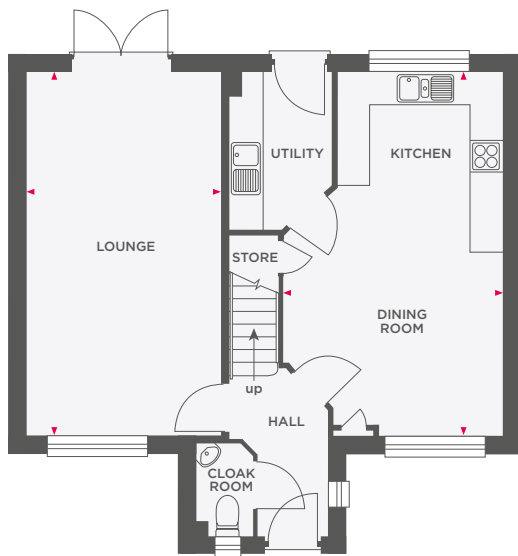
Wain Homes abides by the New Homes Quality Code, an independent industry code introduced to champion quality new homes and better consumer outcomes. Dimensions shown are internal finished dimensions which may vary as each home is built individually and the precise internal finishes may not always be the same. Please be aware that window and door positions could vary due to plot orientation. It is essential to view the working drawings with our Sales Executive for plot specific detail. Enquire for further information. Wain Homes Policy is continuous product and specification development. Every effort has been made to ensure the accuracy of the information provided in this leaflet at the date of publication but it may be subject to change without notice. Please consult with our Sales Executive to obtain the current specification. You should take appropriate steps to verify any information upon which you wish to rely. The sizes indicated are not intended to be used for carpet sizes, appliance spaces or items of furniture. Elevational treatments may vary to those shown. These particulars are intended for guidance only and their accuracy is not guaranteed. They do not constitute a contract, part of a contract or warranty. (September 2023)





THE DAVY

4 BEDROOM DETACHED HOME



Lounge	3491 x 6535	11'5" x 21'5"
Kitchen/Dining Room	3956 x 6535	13'0" x 21'5"

Master Bedroom	3956 x 3605	13'0" x 11'9"
Bedroom 2	3553 x 3605	11'7" x 11'9"
Bedroom 3	2847 x 2842	9'4" x 9'4"
Bedroom 4	2510 x 2842	8'3" x 9'4"



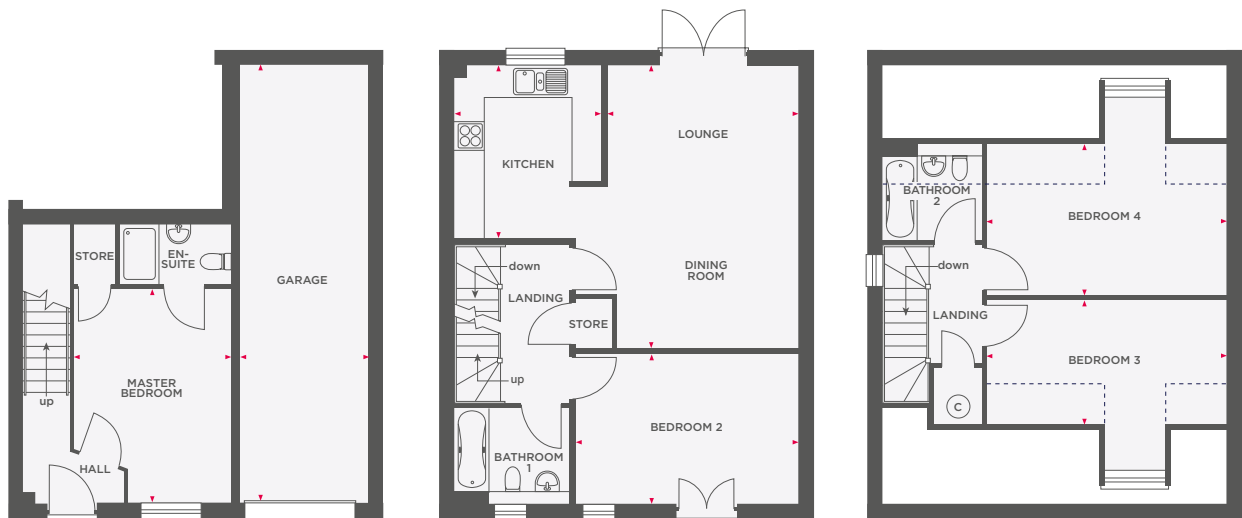
Wain Homes abides by the New Homes Quality Code, an independent industry code introduced to champion quality new homes and better consumer outcomes. Dimensions shown are internal finished dimensions which may vary as each home is built individually and the precise internal finishes may not always be the same. Please be aware that window and door positions could vary due to plot orientation. It is essential to view the working drawings with our Sales Executive for plot specific detail. Enquire for further information. Wain Homes Policy is continuous product and specification development. Every effort has been made to ensure the accuracy of the information provided in this leaflet at the date of publication but it may be subject to change without notice. Please consult with our Sales Executive to obtain the current specification. You should take appropriate steps to verify any information upon which you wish to rely. The sizes indicated are not intended to be used for carpet sizes, appliance spaces or items of furniture. Elevational treatments may vary to those shown. These particulars are intended for guidance only and their accuracy is not guaranteed. They do not constitute a contract, part of a contract or warranty. (September 2023)





THE LONGSTONE

4 BEDROOM DETACHED HOME WITH INTEGRAL GARAGE



Master Bedroom	3198 x 4360	10'6" x 14'4"
Garage	2622 x 8923	8'9" x 29'3"
Lounge/Dining Room	3886 x 5763	12'9" x 18'11"
Kitchen	2985 x 3523	9'10" x 11'7"
Bedroom 2	4527 x 3039	14'10" x 10'0"

Bedroom 3	4883 x 2539	16'0" x 8'4"
Bedroom 4	4883 x 3040	16'0" x 10'0"



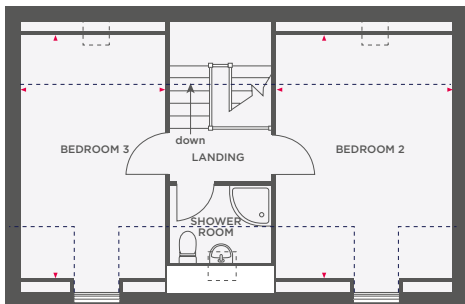
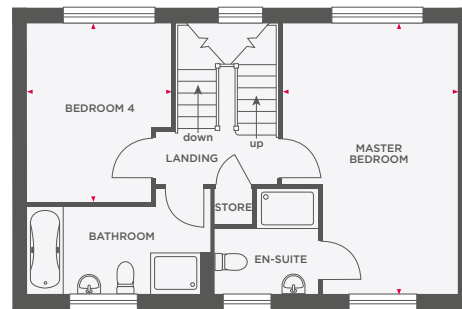
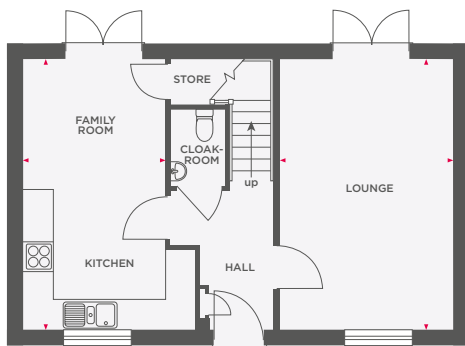
Wain Homes abides by the New Homes Quality Code, an independent industry code introduced to champion quality new homes and better consumer outcomes. Dimensions shown are internal finished dimensions which may vary as each home is built individually and the precise internal finishes may not always be the same. Please be aware that window and door positions could vary due to plot orientation. It is essential to view the working drawings with our Sales Executive for plot specific detail. Enquire for further information. Wain Homes Policy is continuous product and specification development. Every effort has been made to ensure the accuracy of the information provided in this leaflet at the date of publication but it may be subject to change without notice. Please consult with our Sales Executive to obtain the current specification. You should take appropriate steps to verify any information upon which you wish to rely. The sizes indicated are not intended to be used for carpet sizes, appliance spaces or items of furniture. Elevational treatments may vary to those shown. These particulars are intended for guidance only and their accuracy is not guaranteed. They do not constitute a contract, part of a contract or warranty. (September 2023)





THE WORDSWORTH

4 BEDROOM DETACHED HOME



Limited Use Area

Reduced head height below 1.5m

Lounge	3397 x 5298	11'1" x 17'4"
Kitchen/Family Room	2800 x 5298	9'2" x 17'4"
Master Bedroom	3457 x 5298	11'3" x 17'4"
Bedroom 4	2800 x 3510	9'2" x 11'5"
Bedroom 2	3457 x 4773	11'3" x 15'8"
Bedroom 3	2800 x 4773	9'2" x 15'8"



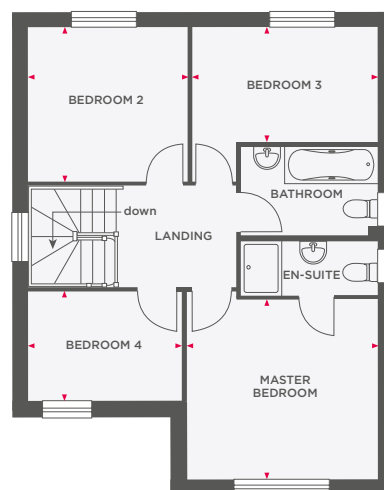
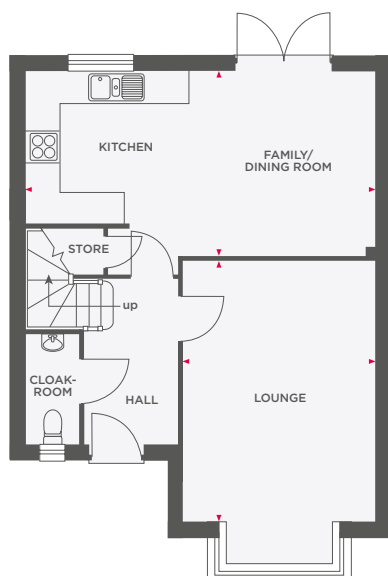
Wain Homes abides by the New Homes Quality Code, an independent industry code introduced to champion quality new homes and better consumer outcomes. Dimensions shown are internal finished dimensions which may vary as each home is built individually and the precise internal finishes may not always be the same. Please be aware that window and door positions could vary due to plot orientation. It is essential to view the working drawings with our Sales Executive for plot specific detail. Enquire for further information. Wain Homes Policy is continuous product and specification development. Every effort has been made to ensure the accuracy of the information provided in this leaflet at the date of publication but it may be subject to change without notice. Please consult with our Sales Executive to obtain the current specification. You should take appropriate steps to verify any information upon which you wish to rely. The sizes indicated are not intended to be used for carpet sizes, appliance spaces or items of furniture. Elevational treatments may vary to those shown. These particulars are intended for guidance only and their accuracy is not guaranteed. They do not constitute a contract, part of a contract or warranty. (September 2023)

Wain
HOMES



THE WREN

4 BEDROOM DETACHED HOME



Lounge	3552 x 4857	11'8" x 15'11"
Kitchen/Dining Room	3425 x 6490	11'3" x 21'4"

Master Bedroom	3555 x 3344	11'8" x 11'0"
Bedroom 2	2950 x 2837	9'8" x 9'4"
Bedroom 3	3453 x 2096	11'4" x 6'11"
Bedroom 4	2848 x 2037	9'4" x 6'8"



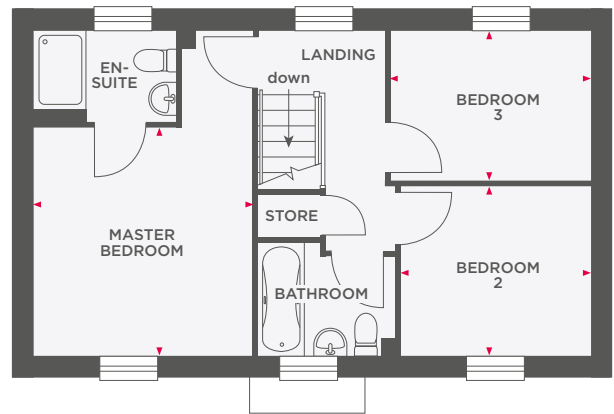
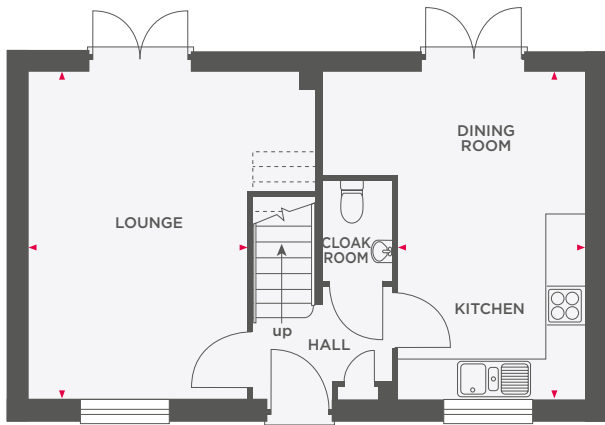
Wain Homes abides by the New Homes Quality Code, an independent industry code introduced to champion quality new homes and better consumer outcomes. Dimensions shown are internal finished dimensions which may vary as each home is built individually and the precise internal finishes may not always be the same. Please be aware that window and door positions could vary due to plot orientation. It is essential to view the working drawings with our Sales Executive for plot specific detail. Enquire for further information. Wain Homes Policy is continuous product and specification development. Every effort has been made to ensure the accuracy of the information provided in this leaflet at the date of publication but it may be subject to change without notice. Please consult with our Sales Executive to obtain the current specification. You should take appropriate steps to verify any information upon which you wish to rely. The sizes indicated are not intended to be used for carpet sizes, appliance spaces or items of furniture. Elevational treatments may vary to those shown. These particulars are intended for guidance only and their accuracy is not guaranteed. They do not constitute a contract, part of a contract or warranty. (September 2023)





THE BRANCASTER

3 BEDROOM HOME



Lounge	3315 x 4960	10'10" x 16'3"
Kitchen/Dining Room	2838 x 4960	9'4" x 16'3"

Master Bedroom	3315 x 3485	10'10" x 11'5"
Bedroom 2	2875 x 2586	9'5" x 8'5"
Bedroom 3	3030 x 2285	9'11" x 7'5"



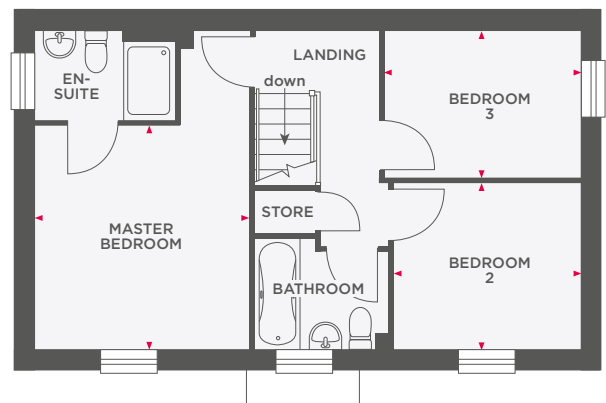
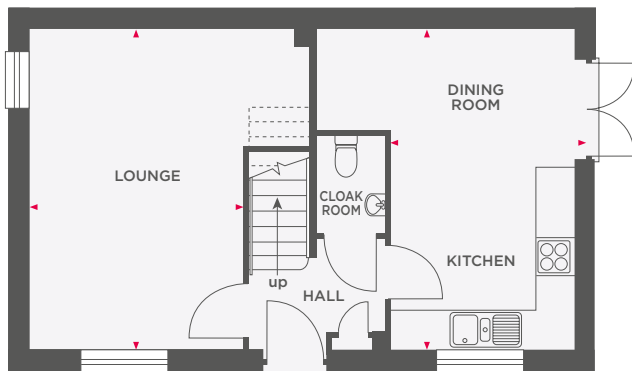
Wain Homes abides by the New Homes Quality Code, an independent industry code introduced to champion quality new homes and better consumer outcomes. Dimensions shown are internal finished dimensions which may vary as each home is built individually and the precise internal finishes may not always be the same. Please be aware that window and door positions could vary due to plot orientation. It is essential to view the working drawings with our Sales Executive for plot specific detail. Enquire for further information. Wain Homes Policy is continuous product and specification development. Every effort has been made to ensure the accuracy of the information provided in this leaflet at the date of publication but it may be subject to change without notice. Please consult with our Sales Executive to obtain the current specification. You should take appropriate steps to verify any information upon which you wish to rely. The sizes indicated are not intended to be used for carpet sizes, appliance spaces or items of furniture. Elevational treatments may vary to those shown. These particulars are intended for guidance only and their accuracy is not guaranteed. They do not constitute a contract, part of a contract or warranty. (September 2023)





THE BRANCASTER S

3 BEDROOM HOME



Lounge	3315 x 4960	10'10" x 16'3"
Kitchen/Dining Room	2838 x 4960	9'4" x 16'3"

Master Bedroom	3315 x 3485	10'10" x 11'5"
Bedroom 2	2875 x 2586	9'5" x 8'5"
Bedroom 3	3030 x 2285	9'11" x 7'5"



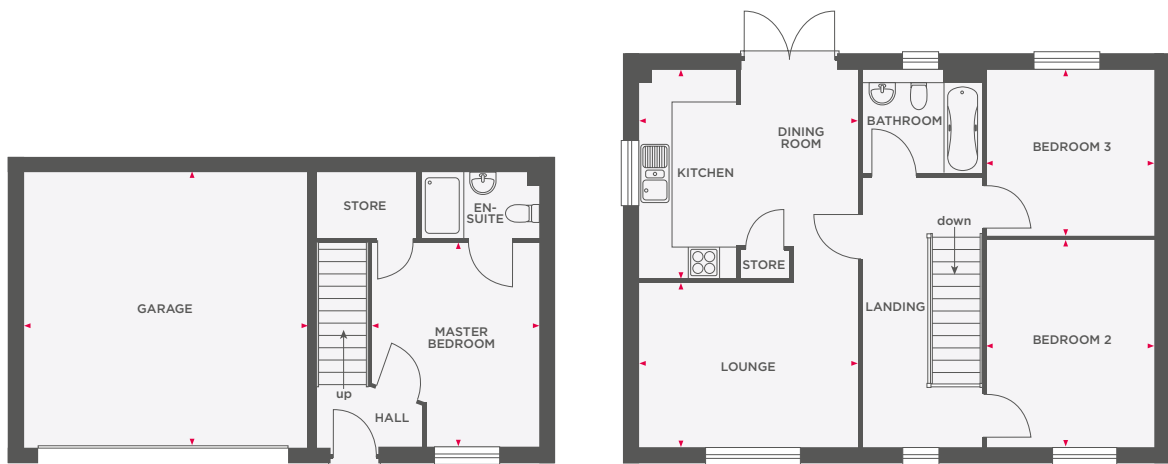
Wain Homes abides by the New Homes Quality Code, an independent industry code introduced to champion quality new homes and better consumer outcomes. Dimensions shown are internal finished dimensions which may vary as each home is built individually and the precise internal finishes may not always be the same. Please be aware that window and door positions could vary due to plot orientation. It is essential to view the working drawings with our Sales Executive for plot specific detail. Enquire for further information. Wain Homes Policy is continuous product and specification development. Every effort has been made to ensure the accuracy of the information provided in this leaflet at the date of publication but it may be subject to change without notice. Please consult with our Sales Executive to obtain the current specification. You should take appropriate steps to verify any information upon which you wish to rely. The sizes indicated are not intended to be used for carpet sizes, appliance spaces or items of furniture. Elevational treatments may vary to those shown. These particulars are intended for guidance only and their accuracy is not guaranteed. They do not constitute a contract, part of a contract or warranty. (September 2023)





THE TREMOR

3 BEDROOM HOME WITH INTEGRAL GARAGE



Master Bedroom	3240 x 3850	10'7" x 12'7"
Garage	5333 x 5198	17'5" x 17'1"

Lounge	4111 x 3077	13'5" x 10'1"
Kitchen/Dining Room	4111 x 3933	13'5" x 12'10"
Bedroom 2	3152 x 3885	10'4" x 12'8"
Bedroom 3	3152 x 3125	10'4" x 10'3"



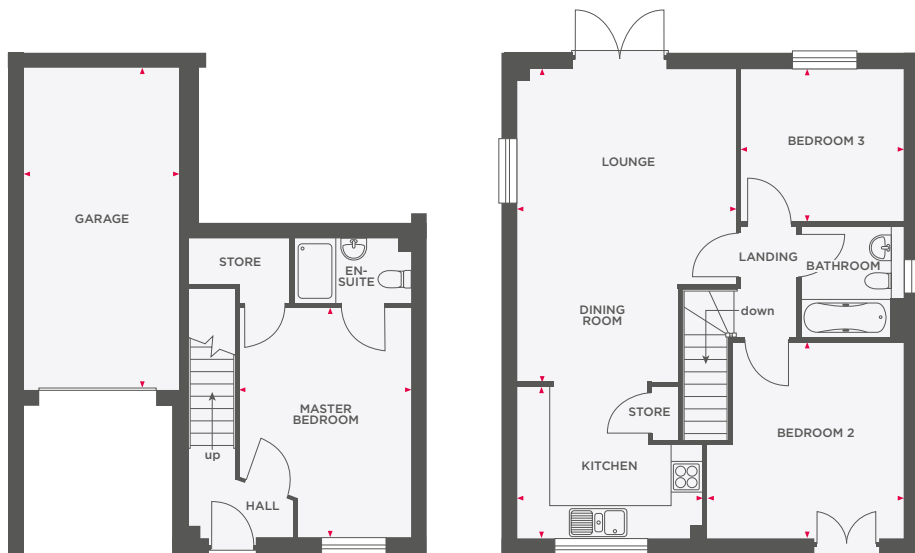
Wain Homes abides by the New Homes Quality Code, an independent industry code introduced to champion quality new homes and better consumer outcomes. Dimensions shown are internal finished dimensions which may vary as each home is built individually and the precise internal finishes may not always be the same. Please be aware that window and door positions could vary due to plot orientation. It is essential to view the working drawings with our Sales Executive for plot specific detail. Enquire for further information. Wain Homes Policy is continuous product and specification development. Every effort has been made to ensure the accuracy of the information provided in this leaflet at the date of publication but it may be subject to change without notice. Please consult with our Sales Executive to obtain the current specification. You should take appropriate steps to verify any information upon which you wish to rely. The sizes indicated are not intended to be used for carpet sizes, appliance spaces or items of furniture. Elevational treatments may vary to those shown. These particulars are intended for guidance only and their accuracy is not guaranteed. They do not constitute a contract, part of a contract or warranty. (September 2023)





THE WENFORD

3 BEDROOM HOME WITH INTEGRAL GARAGE



Master Bedroom 3238 x 4360 10'7" x 14'4"

Lounge 5960 x 4153 19'6" x 13'7"

Kitchen 3508 x 2850 11'6" x 9'4"

Bedroom 2 3727 x 3704 12'3" x 12'2"

Bedroom 3 3082 x 2879 10'2" x 9'6"



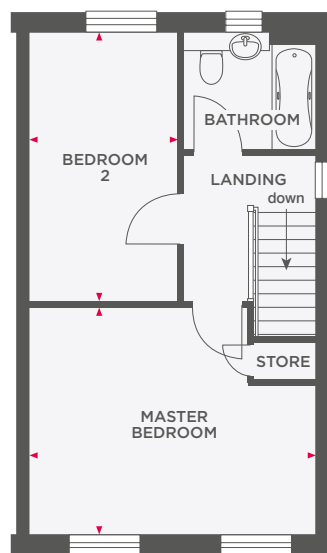
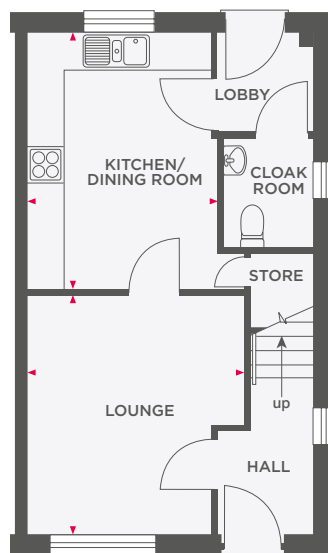
Wain Homes abides by the New Homes Quality Code, an independent industry code introduced to champion quality new homes and better consumer outcomes. Dimensions shown are internal finished dimensions which may vary as each home is built individually and the precise internal finishes may not always be the same. Please be aware that window and door positions could vary due to plot orientation. It is essential to view the working drawings with our Sales Executive for plot specific detail. Enquire for further information. Wain Homes Policy is continuous product and specification development. Every effort has been made to ensure the accuracy of the information provided in this leaflet at the date of publication but it may be subject to change without notice. Please consult with our Sales Executive to obtain the current specification. You should take appropriate steps to verify any information upon which you wish to rely. The sizes indicated are not intended to be used for carpet sizes, appliance spaces or items of furniture. Elevational treatments may vary to those shown. These particulars are intended for guidance only and their accuracy is not guaranteed. They do not constitute a contract, part of a contract or warranty. (September 2023)





THE TAVENER

2 BEDROOM HOME



Lounge	3031 x 3947	9'10" x 12'10"
Kitchen/Dining Room	3138 x 4250	10'3" x 13'11"

Master Bedroom	4703 x 3744	15'5" x 12'3"
Bedroom 2	2438 x 4453	8'0" x 14'7"



Wain Homes abides by the New Homes Quality Code, an independent industry code introduced to champion quality new homes and better consumer outcomes. Dimensions shown are internal finished dimensions which may vary as each home is built individually and the precise internal finishes may not always be the same. Please be aware that window and door positions could vary due to plot orientation. It is essential to view the working drawings with our Sales Executive for plot specific detail. Enquire for further information. Wain Homes Policy is continuous product and specification development. Every effort has been made to ensure the accuracy of the information provided in this leaflet at the date of publication but it may be subject to change without notice. Please consult with our Sales Executive to obtain the current specification. You should take appropriate steps to verify any information upon which you wish to rely. The sizes indicated are not intended to be used for carpet sizes, appliance spaces or items of furniture. Elevational treatments may vary to those shown. These particulars are intended for guidance only and their accuracy is not guaranteed. They do not constitute a contract, part of a contract or warranty. (September 2023)

