


*Wain*  
HOMES



A place that lets you be you.  
That says everything about you.  
That feels good, feels right.  
Where life can be beautifully imperfect.  
And you love every moment of it.

YOUR KIND OF *perfect*

# HIGHER TREWHIDDLE DEVELOPMENT PLAN



Dimensions shown are internal finished dimensions which may vary as each home is built individually and the precise internal finishes may not always be the same. Please be aware that window and door positions could vary due to plot orientation. It is essential to view the working drawings with our Sales Executive for plot specific detail. Enquire for further information. Wain Homes Policy is continuous product and specification development. Every effort has been made to ensure the accuracy of the information provided in this leaflet at the date of publication but it may be subject to change without notice. Please consult with our Sales Executive to obtain the current specification. You should take appropriate steps to verify any information upon which you wish to rely. The sizes indicated are not intended to be used for carpet sizes, appliance spaces or items of furniture. Elevational treatments may vary to those shown. These particulars are intended for guidance only and their accuracy is not guaranteed. They do not constitute a contract, part of a contract or warranty. (February 2024)

# TREWHIDDLE SPECIFICATION

## KITCHENS

- Glass Splashback
- Stainless Steel Electric Oven and Gas Hob, Extractor over (as per plot specific working drawing)
- Worktop and Upstand
- Soft Closer Drawers and Hinges
- Downlighters
- Under Unit Lighting
- All Appliances as per Kitchen Layout
- USB Charger Socket
- Brushed Chrome Switches/Sockets
- Stainless Steel Sink with Chrome Mixer Tap

## BATHROOMS

- Contemporary White Sanitary Ware
- Chrome Bath Pillar Tap
- Shaver Socket to Bathroom and En-suite
- Chrome Heated Towel Rail to Bathroom and En-suite
- Downlighters to En-Suite

## WALL TILING

### Cloaks

- Wall Tiling to splashback only in Cloaks

### Bathroom

- Half Height Tiling throughout
- Full Height to Shower Cubicle
- Full Height Tiling around Bath if Shower over Bath
- Tiled Window Cills where applicable

### En-Suites

- Full Height Tiling to Shower Cubicle and Half Height to all Other Walls
- Tiled Window Cills where applicable

## HEATING SYSTEM

- Gas Central Heating to all Properties

## INTERNAL FEATURES

- Staircase White, Oak Handrail
- Switches and Sockets White to all Rooms except Kitchen
- Wain Home Cream Painted Walls
- BT & TV points Lounge and Bedroom 1
- Data Point Bed 1
- Vertical Grooved Oak Finish Internal Doors with Chrome Ironmongery
- Smoke Detectors
- Pencil Round Skirting Boards and Architraves
- Flat Finish Ceilings to all Rooms in White Matt

## EXTERNAL FEATURES

- UPVC Fascia and Soffit Boards
- PVCu Double Glazed to all Windows (except Garage) to suit external elevations
- French Doors and Paved Patio where applicable
- GRP Front/Rear Doors
- Electric Front Door Bell
- 1.8m Palisade Fencing
- Division Fencing 1.8m Palisade
- External Lights to be fitted Front and Rear Elevations, Energy Efficient Fittings
- Paving Slab Paths to serve Front and Side Entrances as per the External Working Drawings
- UPVC Rainwater Goods
- External Tap

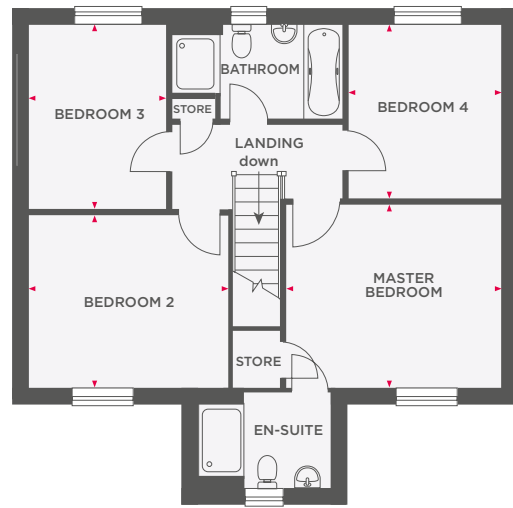
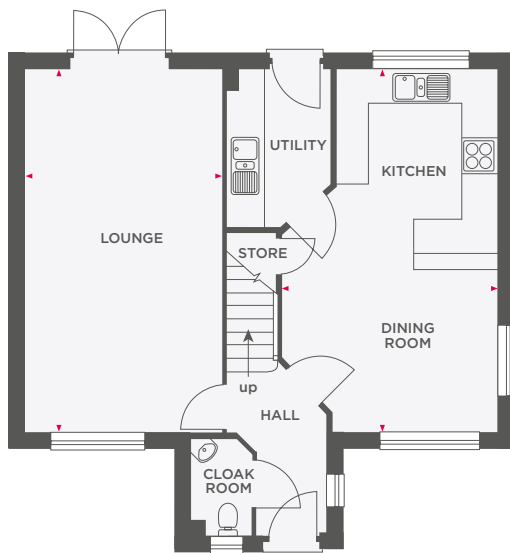
## WARRANTIES

- 10 Year NHBC Buildmark Warranty
- 2 Year Wain Homes Warranty



# THE DAVY

## 4 BEDROOM HOME WITH GARAGE



Lounge	3491 x 6535	11'5" x 21'5"
Kitchen/Dining Room	3840 x 6535	12'7" x 21'5"

Master Bedroom	3840 x 3300	12'7" x 11'0"
Bedroom 2	3553 x 3605	11'8" x 11'10"
Bedroom 3	2460 x 3342	8'8" x 10'11"
Bedroom 4	2734 x 3140	8'11" x 10'3"



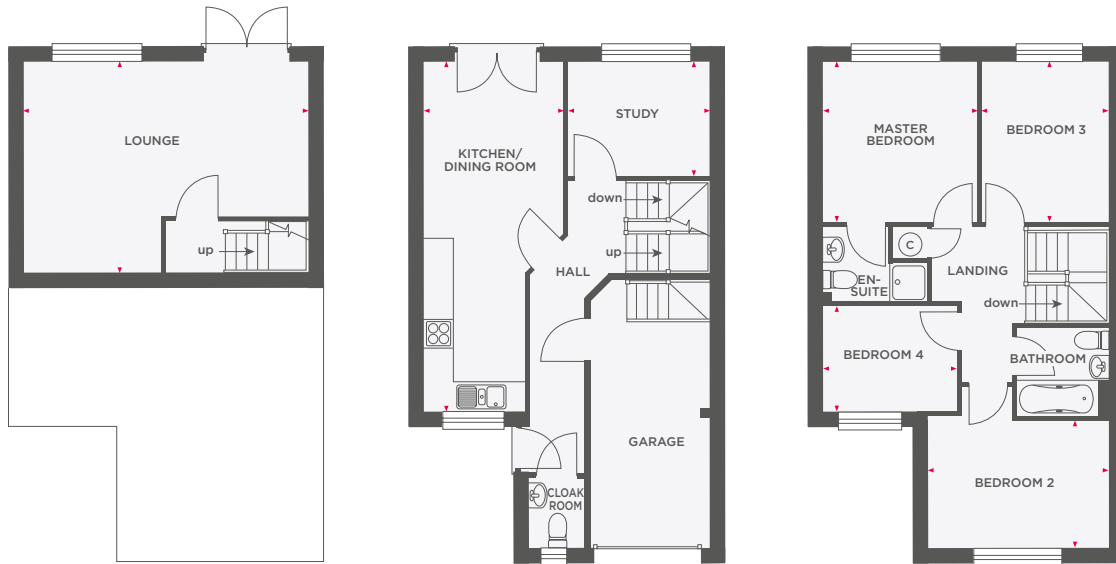
Wain Homes abides by the New Homes Quality Code, an independent industry code introduced to champion quality new homes and better consumer outcomes. Dimensions shown are internal finished dimensions which may vary as each home is built individually and the precise internal finishes may not always be the same. Please be aware that window and door positions could vary due to plot orientation. It is essential to view the working drawings with our Sales Executive for plot specific detail. Enquire for further information. Wain Homes Policy is continuous product and specification development. Every effort has been made to ensure the accuracy of the information provided in this leaflet at the date of publication but it may be subject to change without notice. Please consult with our Sales Executive to obtain the current specification. You should take appropriate steps to verify any information upon which you wish to rely. The sizes indicated are not intended to be used for carpet sizes, appliance spaces or items of furniture. Elevational treatments may vary to those shown. These particulars are intended for guidance only and their accuracy is not guaranteed. They do not constitute a contract, part of a contract or warranty. (September 2023)





# THE DUNMERE

4 BEDROOM HOME WITH INTEGRAL GARAGE



<b>Lounge</b>	5935 (max) x 4390 (max)	19'6" (max) x 14'5" (max)
<b>Kitchen/ Dining Room</b>	2909 (max) x 7285 (max)	9'6" (max) x 23'11" (max)
<b>Study</b>	2937 x 2390	9'7" x 7'10"

<b>Master Bedroom</b>	3215 x 3347	10'6" x 11'0"
<b>Bedroom 2</b>	3470 x 2616	11'4" x 8'7"
<b>Bedroom 3</b>	2631 x 3347	8'7" x 11'0"
<b>Bedroom 4</b>	2796 x 2197	9'2" x 7'2"



**Wain Homes abides by the New Homes Quality Code, an independent industry code introduced to champion quality new homes and better consumer outcomes.** Dimensions shown are internal finished dimensions which may vary as each home is built individually and the precise internal finishes may not always be the same. Please be aware that window and door positions could vary due to plot orientation. It is essential to view the working drawings with our Sales Executive for plot specific detail. Enquire for further information. Wain Homes Policy is continuous product and specification development. Every effort has been made to ensure the accuracy of the information provided in this leaflet at the date of publication but it may be subject to change without notice. Please consult with our Sales Executive to obtain the current specification. You should take appropriate steps to verify any information upon which you wish to rely. The sizes indicated are not intended to be used for carpet sizes, appliance spaces or items of furniture. Elevational treatments may vary to those shown. These particulars are intended for guidance only and their accuracy is not guaranteed. They do not constitute a contract, part of a contract or warranty. (May 2024)





# THE DUNMERE

4 BEDROOM HOME WITH INTEGRAL GARAGE



<b>Lounge</b>	5935 (max) x 4390 (max)	19'6" (max) x 14'5" (max)
<b>Kitchen/ Dining Room</b>	2909 (max) x 7285 (max)	9'6" (max) x 23'11" (max)
<b>Study</b>	2937 x 2390	9'7" x 7'10"

<b>Master Bedroom</b>	3215 x 3347	10'6" x 11'0"
<b>Bedroom 2</b>	3470 x 2616	11'4" x 8'7"
<b>Bedroom 3</b>	2631 x 3347	8'7" x 11'0"
<b>Bedroom 4</b>	2796 x 2197	9'2" x 7'2"



Wain Homes abides by the New Homes Quality Code, an independent industry code introduced to champion quality new homes and better consumer outcomes. Dimensions shown are internal finished dimensions which may vary as each home is built individually and the precise internal finishes may not always be the same. Please be aware that window and door positions could vary due to plot orientation. It is essential to view the working drawings with our Sales Executive for plot specific detail. Enquire for further information. Wain Homes Policy is continuous product and specification development. Every effort has been made to ensure the accuracy of the information provided in this leaflet at the date of publication but it may be subject to change without notice. Please consult with our Sales Executive to obtain the current specification. You should take appropriate steps to verify any information upon which you wish to rely. The sizes indicated are not intended to be used for carpet sizes, appliance spaces or items of furniture. Elevational treatments may vary to those shown. These particulars are intended for guidance only and their accuracy is not guaranteed. They do not constitute a contract, part of a contract or warranty. (May 2024)





# THE FOXTON

## 4 BEDROOM HOME



<b>Kitchen/ Dining Room</b>	3263 x 5644	10'8" x 16'0"
<b>Lounge/ Dining Room</b>	5350 (max) x 4730 (max)	17'7" (max) x 15'6" (max)
<b>Bedroom 2</b>	3263 x 3832	10'8" x 12'7"

<b>Master Bedroom</b>	3899 x 2892	12'9" x 9'6"
<b>Bedroom 3</b>	3087 (max) x 3417 (max)	10'1" (max) x 11'2" (max)
<b>Bedroom 4</b>	2176 (max) x 2905 (max)	7'1" (max) x 9'6" (max)



**Wain Homes abides by the New Homes Quality Code, an independent industry code introduced to champion quality new homes and better consumer outcomes.** Dimensions shown are internal finished dimensions which may vary as each home is built individually and the precise internal finishes may not always be the same. Please be aware that window and door positions could vary due to plot orientation. It is essential to view the working drawings with our Sales Executive for plot specific detail. Enquire for further information. Wain Homes Policy is continuous product and specification development. Every effort has been made to ensure the accuracy of the information provided in this leaflet at the date of publication but it may be subject to change without notice. Please consult with our Sales Executive to obtain the current specification. You should take appropriate steps to verify any information upon which you wish to rely. The sizes indicated are not intended to be used for carpet sizes, appliance spaces or items of furniture. Elevational treatments may vary to those shown. These particulars are intended for guidance only and their accuracy is not guaranteed. They do not constitute a contract, part of a contract or warranty. (May 2024)







# THE FOXTON

## 4 BEDROOM HOME



Kitchen/ Dining Room	3263 x 5644	10'8" x 16'0"
Lounge/ Dining Room	5350 (max) x 4730 (max)	17'7" (max) x 15'6" (max)
Bedroom 2	3263 x 3832	10'8" x 12'7"

Master Bedroom	3899 x 2892	12'9" x 9'6"
Bedroom 3	3087 (max) x 3417 (max)	10'1" (max) x 11'2" (max)
Bedroom 4	2176 (max) x 2905 (max)	7'1" (max) x 9'6" (max)



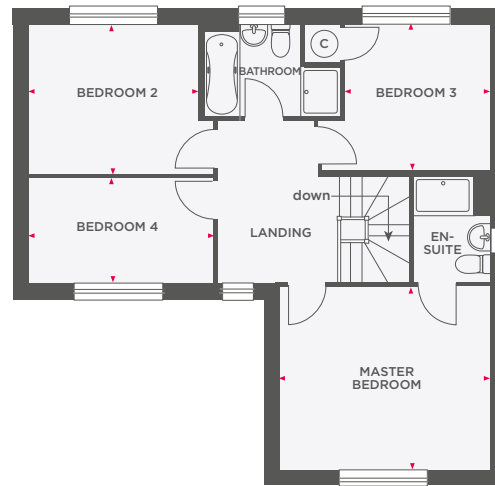
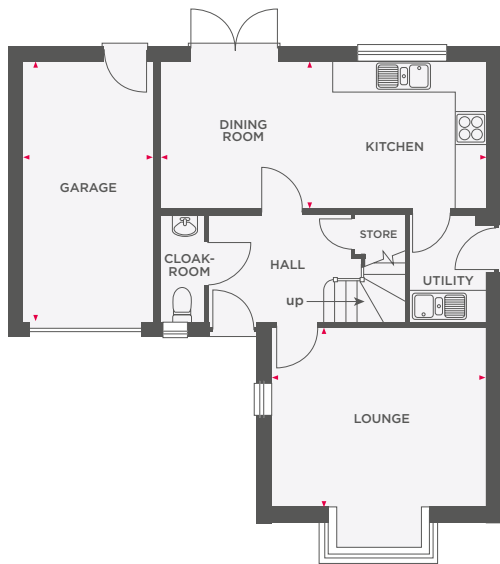
Wain Homes abides by the New Homes Quality Code, an independent industry code introduced to champion quality new homes and better consumer outcomes. Dimensions shown are internal finished dimensions which may vary as each home is built individually and the precise internal finishes may not always be the same. Please be aware that window and door positions could vary due to plot orientation. It is essential to view the working drawings with our Sales Executive for plot specific detail. Enquire for further information. Wain Homes Policy is continuous product and specification development. Every effort has been made to ensure the accuracy of the information provided in this leaflet at the date of publication but it may be subject to change without notice. Please consult with our Sales Executive to obtain the current specification. You should take appropriate steps to verify any information upon which you wish to rely. The sizes indicated are not intended to be used for carpet sizes, appliance spaces or items of furniture. Elevational treatments may vary to those shown. These particulars are intended for guidance only and their accuracy is not guaranteed. They do not constitute a contract, part of a contract or warranty. (May 2024)





# THE NEWTON

4 BEDROOM HOME WITH INTEGRAL GARAGE



Lounge	4247 x 3562	13'11" x 11'8"
Kitchen/Dining Room	6459 x 2910	21'2" x 9'7"
Garage	2575 x 5198	8'5" x 17'1"

Master Bedroom	4247 x 3624	13'11" x 11'11"
Bedroom 2	3379 x 2985	11'1" x 9'10"
Bedroom 3	2896 x 2935	9'6" x 9'8"
Bedroom 4	3670 x 2075	12'1" x 6'10"



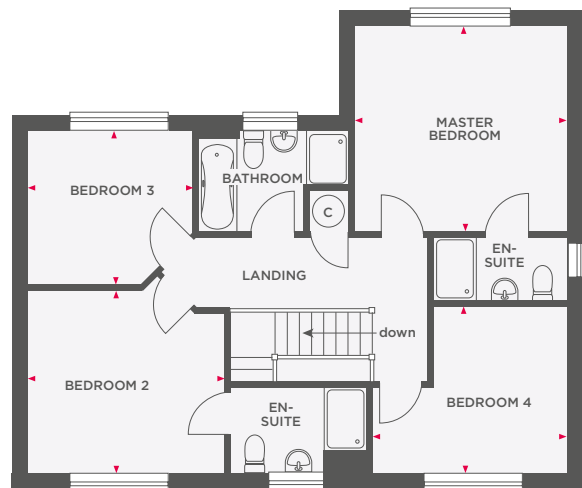
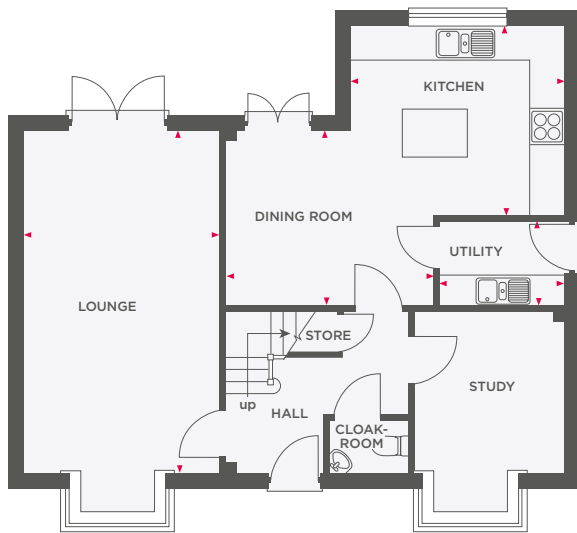
Wain Homes abides by the New Homes Quality Code, an independent industry code introduced to champion quality new homes and better consumer outcomes. Dimensions shown are internal finished dimensions which may vary as each home is built individually and the precise internal finishes may not always be the same. Please be aware that window and door positions could vary due to plot orientation. It is essential to view the working drawings with our Sales Executive for plot specific detail. Enquire for further information. Wain Homes Policy is continuous product and specification development. Every effort has been made to ensure the accuracy of the information provided in this leaflet at the date of publication but it may be subject to change without notice. Please consult with our Sales Executive to obtain the current specification. You should take appropriate steps to verify any information upon which you wish to rely. The sizes indicated are not intended to be used for carpet sizes, appliance spaces or items of furniture. Elevational treatments may vary to those shown. These particulars are intended for guidance only and their accuracy is not guaranteed. They do not constitute a contract, part of a contract or warranty. (September 2023)





# THE PRIESTLEY

4 BEDROOM DETACHED HOME WITH DOUBLE GARAGE



Lounge	3500 x 6310	11'6" x 20'8"
Kitchen	3835 x 3307	12'7" x 10'2"
Dining Room	3898 x 3263	12'9" x 10'8"
Utility	2270 x 1676	7'5" x 5'6"

Master Bedroom	3835 x 3698	12'7" x 12'1"
Bedroom 2	3557 (max) x 3321 (max)	11'8" (max) x 10'7" (max)
Bedroom 3	3079 (max) x 2896 (max)	10'1" (max) x 9'6" (max)
Bedroom 4	3541 (max) x 3027 (max)	11'7" (max) x 9'11" (max)



Wain Homes abides by the New Homes Quality Code, an independent industry code introduced to champion quality new homes and better consumer outcomes. Dimensions shown are internal finished dimensions which may vary as each home is built individually and the precise internal finishes may not always be the same. Please be aware that window and door positions could vary due to plot orientation. It is essential to view the working drawings with our Sales Executive for plot specific detail. Enquire for further information. Wain Homes Policy is continuous product and specification development. Every effort has been made to ensure the accuracy of the information provided in this leaflet at the date of publication but it may be subject to change without notice. Please consult with our Sales Executive to obtain the current specification. You should take appropriate steps to verify any information upon which you wish to rely. The sizes indicated are not intended to be used for carpet sizes, appliance spaces or items of furniture. Elevational treatments may vary to those shown. These particulars are intended for guidance only and their accuracy is not guaranteed. They do not constitute a contract, part of a contract or warranty. (September 2023)

**Wain**  
HOMES



# THE STEPHENSON

4 BEDROOM HOME WITH DOUBLE GARAGE



Lounge	6198 x 3434	20'4" x 11'3"
Kitchen/ Dining Room	6159 x 5763	20'3" x 18'11"
Garage	5410 x 5522	17'9" x 18'1"

Master Bedroom	3142 x 4214	10'4" x 13'10"
Bedroom 2	2875 x 3835	9'5" x 12'7"
Bedroom 3	3412 x 2382	11'2" x 7'9"
Bedroom 4	2450 x 3747	7'10" x 11'2"



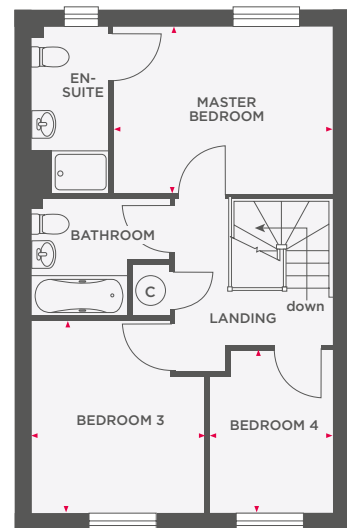
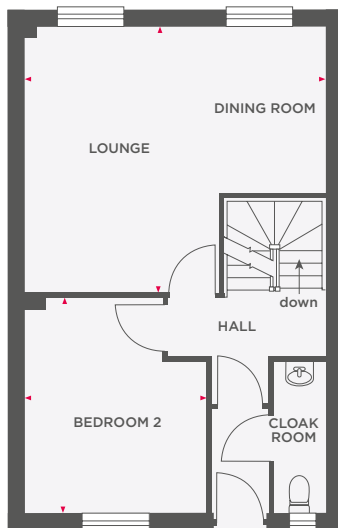
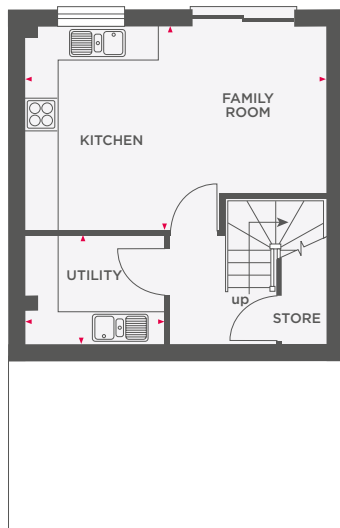
Wain Homes abides by the New Homes Quality Code, an independent industry code introduced to champion quality new homes and better consumer outcomes. Dimensions shown are internal finished dimensions which may vary as each home is built individually and the precise internal finishes may not always be the same. Please be aware that window and door positions could vary due to plot orientation. It is essential to view the working drawings with our Sales Executive for plot specific detail. Enquire for further information. Wain Homes Policy is continuous product and specification development. Every effort has been made to ensure the accuracy of the information provided in this leaflet at the date of publication but it may be subject to change without notice. Please consult with our Sales Executive to obtain the current specification. You should take appropriate steps to verify any information upon which you wish to rely. The sizes indicated are not intended to be used for carpet sizes, appliance spaces or items of furniture. Elevational treatments may vary to those shown. These particulars are intended for guidance only and their accuracy is not guaranteed. They do not constitute a contract, part of a contract or warranty. (September 2023)





# THE TREGONY

## 4 BEDROOM HOME



<b>Kitchen/ Family Room</b>	5350 (max) x 3625 (max)	17'6" (max) x 10'7" (max)
<b>Utility</b>	2487 x 1956	8'2" x 6'5"

<b>Lounge</b>	5350 (max) x 4724 (max)	17'6" (max) x 15'6" (max)
<b>Bedroom 2</b>	3236 (max) x 3838 (max)	10'7" (max) x 12'7" (max)

<b>Master Bedroom</b>	3887 x 2957	12'9" x 9'8"
<b>Bedroom 3</b>	3087 (max) x 3417 (max)	10'1" (max) x 11'2" (max)
<b>Bedroom 4</b>	2175 (max) x 2892 (max)	7'1" (max) x 9'6" (max)



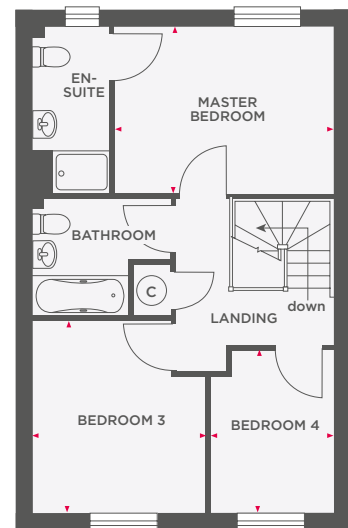
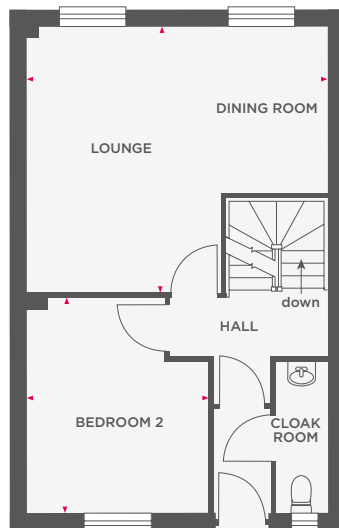
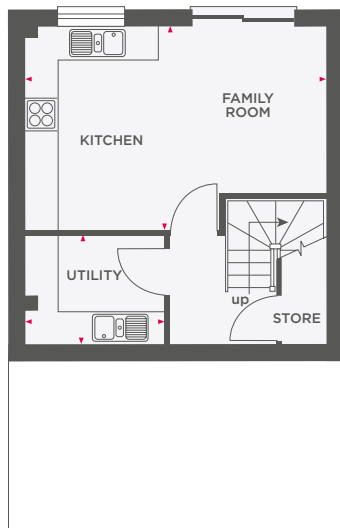
Wain Homes abides by the New Homes Quality Code, an independent industry code introduced to champion quality new homes and better consumer outcomes. Dimensions shown are internal finished dimensions which may vary as each home is built individually and the precise internal finishes may not always be the same. Please be aware that window and door positions could vary due to plot orientation. It is essential to view the working drawings with our Sales Executive for plot specific detail. Enquire for further information. Wain Homes Policy is continuous product and specification development. Every effort has been made to ensure the accuracy of the information provided in this leaflet at the date of publication but it may be subject to change without notice. Please consult with our Sales Executive to obtain the current specification. You should take appropriate steps to verify any information upon which you wish to rely. The sizes indicated are not intended to be used for carpet sizes, appliance spaces or items of furniture. Elevational treatments may vary to those shown. These particulars are intended for guidance only and their accuracy is not guaranteed. They do not constitute a contract, part of a contract or warranty. (May 2024)





# THE TREGONY

## 4 BEDROOM HOME



<b>Kitchen/ Family Room</b>	5350 (max) x 3625 (max)	17'6" (max) x 10'7" (max)
<b>Utility</b>	2487 x 1956	8'2" x 6'5"

<b>Lounge</b>	5350 (max) x 4724 (max)	17'6" (max) x 15'6" (max)
<b>Bedroom 2</b>	3236 (max) x 3838 (max)	10'7" (max) x 12'7" (max)

<b>Master Bedroom</b>	3887 x 2957	12'9" x 9'8"
<b>Bedroom 3</b>	3087 (max) x 3417 (max)	10'1" (max) x 11'2" (max)
<b>Bedroom 4</b>	2175 (max) x 2892 (max)	7'1" (max) x 9'6" (max)



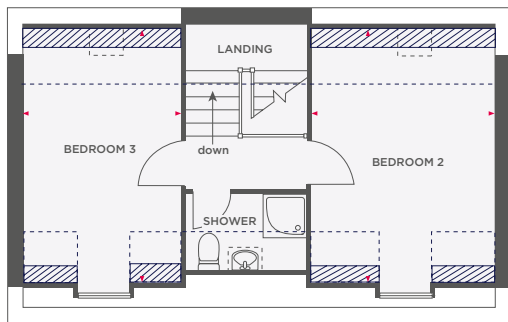
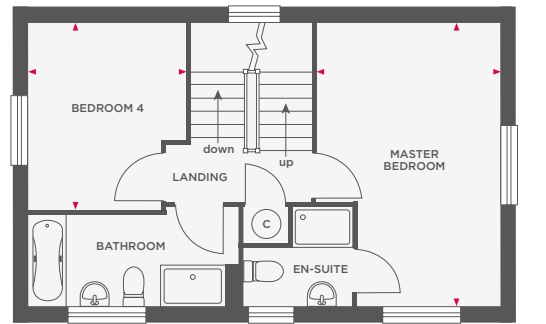
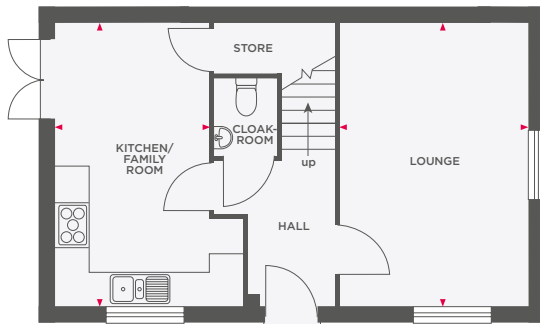
Wain Homes abides by the New Homes Quality Code, an independent industry code introduced to champion quality new homes and better consumer outcomes. Dimensions shown are internal finished dimensions which may vary as each home is built individually and the precise internal finishes may not always be the same. Please be aware that window and door positions could vary due to plot orientation. It is essential to view the working drawings with our Sales Executive for plot specific detail. Enquire for further information. Wain Homes Policy is continuous product and specification development. Every effort has been made to ensure the accuracy of the information provided in this leaflet at the date of publication but it may be subject to change without notice. Please consult with our Sales Executive to obtain the current specification. You should take appropriate steps to verify any information upon which you wish to rely. The sizes indicated are not intended to be used for carpet sizes, appliance spaces or items of furniture. Elevational treatments may vary to those shown. These particulars are intended for guidance only and their accuracy is not guaranteed. They do not constitute a contract, part of a contract or warranty. (May 2024)





# THE WORDSWORTH SA

4 BEDROOM DETACHED HOME WITH GARAGE OR PARKING



 Limited Use Area       Reduced head height below 1.5m

Lounge	3397 x 5072	11'1" x 16'7"
Kitchen/ Family Room	2800 x 5072	9'2" x 16'7"
Master Bedroom	3456 (max) x 5072 (max)	11'3" (max) x 16'7" (max)
Bedroom 4	2800 (max) x 3284 (max)	9'2" (max) x 10'9" (max)
Bedroom 2	3456 x 4547	11'3" x 14'11"
Bedroom 3	2800 x 4547	9'2" x 14'11"



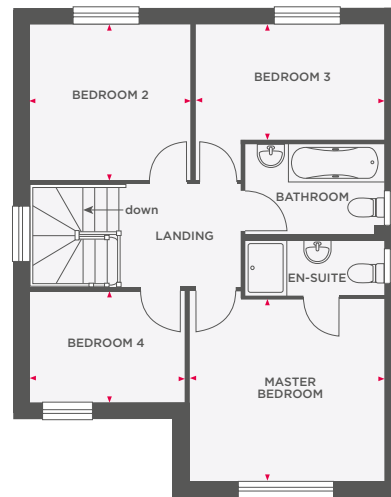
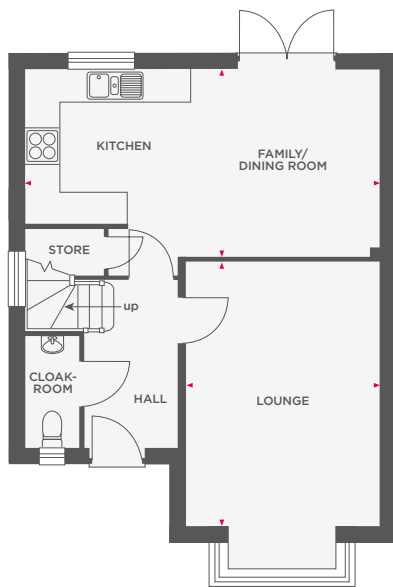
Wain Homes abides by the New Homes Quality Code, an independent industry code introduced to champion quality new homes and better consumer outcomes. Dimensions shown are internal finished dimensions which may vary as each home is built individually and the precise internal finishes may not always be the same. Please be aware that window and door positions could vary due to plot orientation. It is essential to view the working drawings with our Sales Executive for plot specific detail. Enquire for further information. Wain Homes Policy is continuous product and specification development. Every effort has been made to ensure the accuracy of the information provided in this leaflet at the date of publication but it may be subject to change without notice. Please consult with our Sales Executive to obtain the current specification. You should take appropriate steps to verify any information upon which you wish to rely. The sizes indicated are not intended to be used for carpet sizes, appliance spaces or items of furniture. Elevational treatments may vary to those shown. These particulars are intended for guidance only and their accuracy is not guaranteed. They do not constitute a contract, part of a contract or warranty. (September 2023)

**Wain**  
HOMES



# THE WREN

4 BEDROOM HOME WITH GARAGE



Lounge	3552 x 4856	11'8" x 15'11"
Kitchen/Family/ Dining Room	6490 (max) x 3424 (max)	21'3" (max) x 11'3" (max)

Master Bedroom	3554 x 3344	11'8" x 10'11"
Bedroom 2	2950 x 2837	9'8" x 9'3"
Bedroom 3	3452 (max) x 2095 (max)	11'4" (max) x 6'10" (max)
Bedroom 4	2847 x 2037	9'4" x 6'8"



Wain Homes abides by the New Homes Quality Code, an independent industry code introduced to champion quality new homes and better consumer outcomes. Dimensions shown are internal finished dimensions which may vary as each home is built individually and the precise internal finishes may not always be the same. Please be aware that window and door positions could vary due to plot orientation. It is essential to view the working drawings with our Sales Executive for plot specific detail. Enquire for further information. Wain Homes Policy is continuous product and specification development. Every effort has been made to ensure the accuracy of the information provided in this leaflet at the date of publication but it may be subject to change without notice. Please consult with our Sales Executive to obtain the current specification. You should take appropriate steps to verify any information upon which you wish to rely. The sizes indicated are not intended to be used for carpet sizes, appliance spaces or items of furniture. Elevational treatments may vary to those shown. These particulars are intended for guidance only and their accuracy is not guaranteed. They do not constitute a contract, part of a contract or warranty. (September 2023)

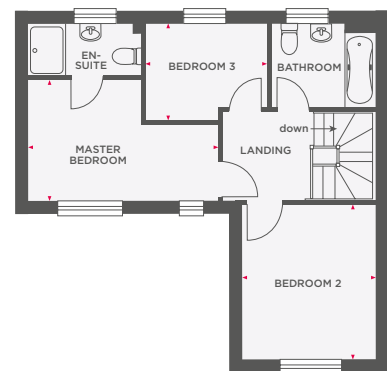
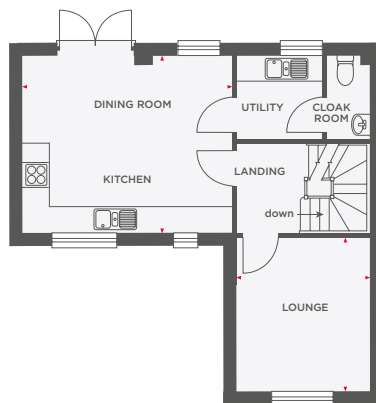
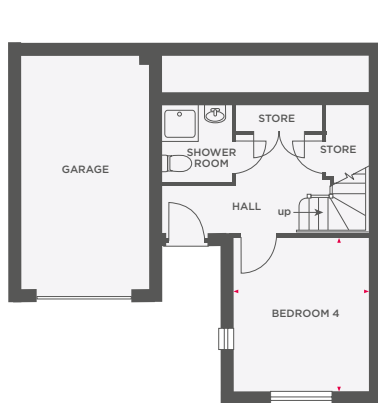






# THE ATKINS

3 BEDROOM HOME WITH INTEGRAL GARAGE



Bedroom 4	3100 x 3567	10'2" x 11'8"
Lounge	3100 x 3567	10'2" x 11'8"
Kitchen/ Dining Room	4912 x 4138	16'1" x 13'7"
Utility	2012 x 1937	6'7" x 6'4"

Master Bedroom	4485 (max) x 2850 (max)	14'8" (max) x 9'4" (max)
Bedroom 2	3100 x 3567	10'2" x 11'8"
Bedroom 3	2862 (max) x 2250 (max)	9'4" (max) x 7'4" (max)



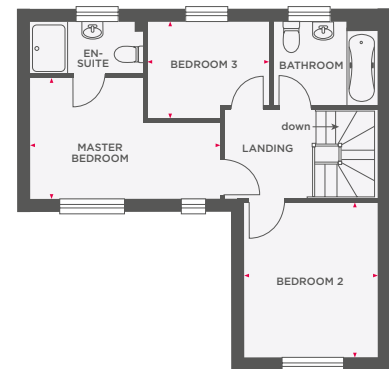
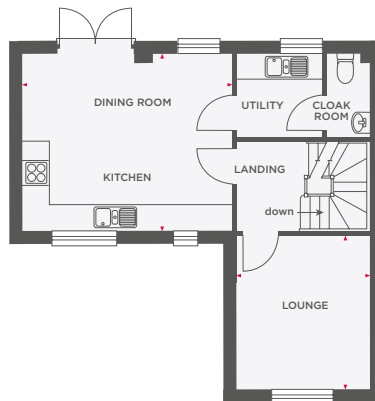
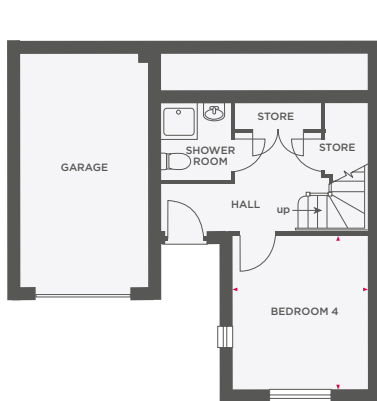
Wain Homes abides by the New Homes Quality Code, an independent industry code introduced to champion quality new homes and better consumer outcomes. Dimensions shown are internal finished dimensions which may vary as each home is built individually and the precise internal finishes may not always be the same. Please be aware that window and door positions could vary due to plot orientation. It is essential to view the working drawings with our Sales Executive for plot specific detail. Enquire for further information. Wain Homes Policy is continuous product and specification development. Every effort has been made to ensure the accuracy of the information provided in this leaflet at the date of publication but it may be subject to change without notice. Please consult with our Sales Executive to obtain the current specification. You should take appropriate steps to verify any information upon which you wish to rely. The sizes indicated are not intended to be used for carpet sizes, appliance spaces or items of furniture. Elevational treatments may vary to those shown. These particulars are intended for guidance only and their accuracy is not guaranteed. They do not constitute a contract, part of a contract or warranty. (May 2024)





# THE ATKINS

3 BEDROOM HOME WITH INTEGRAL GARAGE



Bedroom 4	3100 x 3567	10'2" x 11'8"
Lounge	3100 x 3567	10'2" x 11'8"
Kitchen/ Dining Room	4912 x 4138	16'1" x 13'7"
Utility	2012 x 1937	6'7" x 6'4"

Master Bedroom	4485 (max) x 2850 (max)	14'8" (max) x 9'4" (max)
Bedroom 2	3100 x 3567	10'2" x 11'8"
Bedroom 3	2862 (max) x 2250 (max)	9'4" (max) x 7'4" (max)



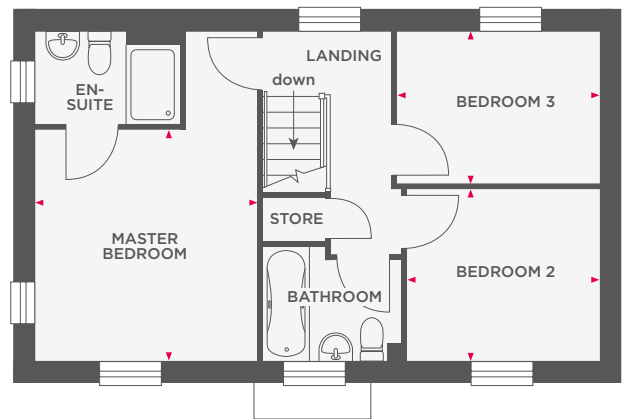
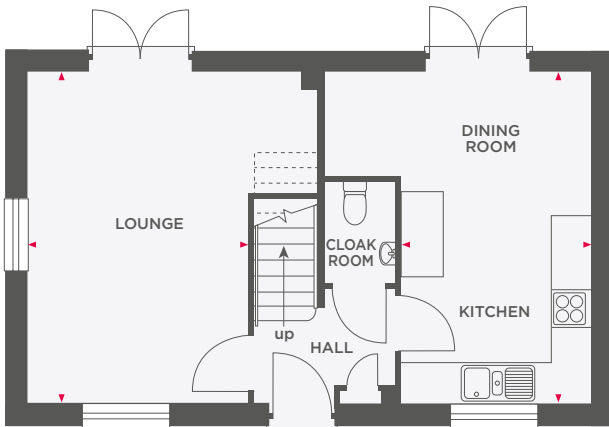
Wain Homes abides by the New Homes Quality Code, an independent industry code introduced to champion quality new homes and better consumer outcomes. Dimensions shown are internal finished dimensions which may vary as each home is built individually and the precise internal finishes may not always be the same. Please be aware that window and door positions could vary due to plot orientation. It is essential to view the working drawings with our Sales Executive for plot specific detail. Enquire for further information. Wain Homes Policy is continuous product and specification development. Every effort has been made to ensure the accuracy of the information provided in this leaflet at the date of publication but it may be subject to change without notice. Please consult with our Sales Executive to obtain the current specification. You should take appropriate steps to verify any information upon which you wish to rely. The sizes indicated are not intended to be used for carpet sizes, appliance spaces or items of furniture. Elevational treatments may vary to those shown. These particulars are intended for guidance only and their accuracy is not guaranteed. They do not constitute a contract, part of a contract or warranty. (May 2024)





# THE BRANCASTER

3 BEDROOM HOME WITH PARKING



Lounge	3315 x 4960	10'10" x 16'3"
Kitchen/Dining Room	2838 x 4960 (max)	9'4" x 16'3" (max)

Master Bedroom	3315 x 3485	10'10" x 11'5"
Bedroom 2	2875 x 2586	9'5" x 8'5"
Bedroom 3	3030 x 2285	9'11" x 7'5"



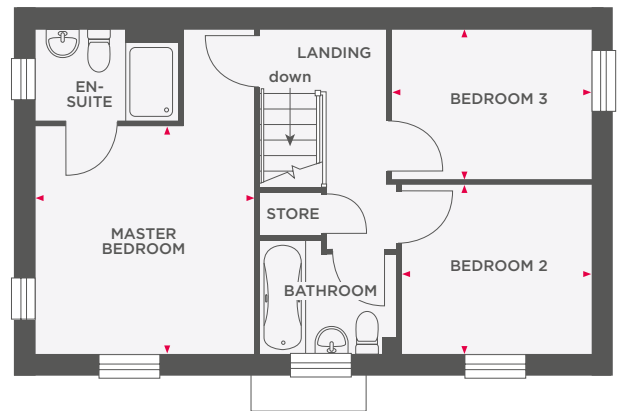
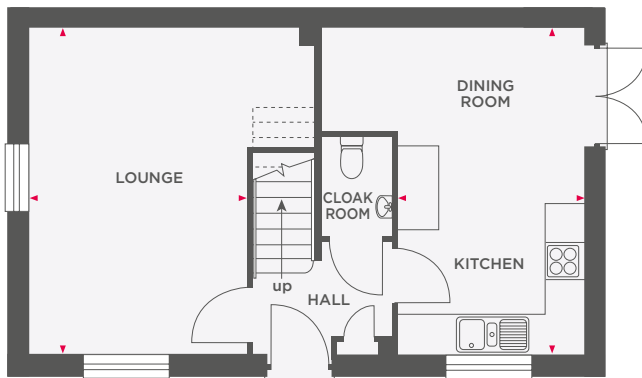
Wain Homes abides by the New Homes Quality Code, an independent industry code introduced to champion quality new homes and better consumer outcomes. Dimensions shown are internal finished dimensions which may vary as each home is built individually and the precise internal finishes may not always be the same. Please be aware that window and door positions could vary due to plot orientation. It is essential to view the working drawings with our Sales Executive for plot specific detail. Enquire for further information. Wain Homes Policy is continuous product and specification development. Every effort has been made to ensure the accuracy of the information provided in this leaflet at the date of publication but it may be subject to change without notice. Please consult with our Sales Executive to obtain the current specification. You should take appropriate steps to verify any information upon which you wish to rely. The sizes indicated are not intended to be used for carpet sizes, appliance spaces or items of furniture. Elevational treatments may vary to those shown. These particulars are intended for guidance only and their accuracy is not guaranteed. They do not constitute a contract, part of a contract or warranty. (September 2023)





# THE BRANCASTER SA

3 BEDROOM HOME WITH PARKING



Lounge	3315 x 4960	10'10" x 16'3"
Kitchen/Dining Room	2835 x 4960 max	9'3" x 16'3" max

Master Bedroom	3315 x 3485	10'10" x 11'5"
Bedroom 2	2875 x 2586	9'5" x 8'5"
Bedroom 3	3030 x 2285	9'11" x 7'5"



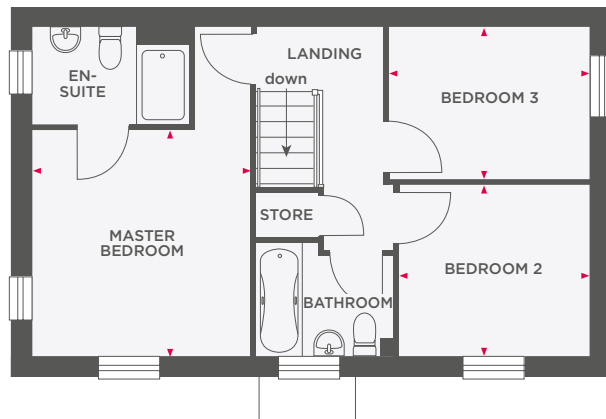
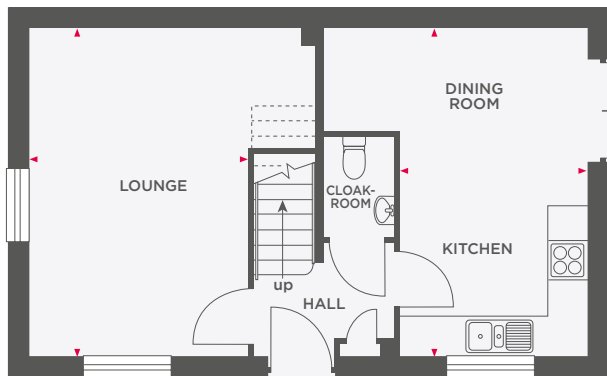
Wain Homes abides by the New Homes Quality Code, an independent industry code introduced to champion quality new homes and better consumer outcomes. Dimensions shown are internal finished dimensions which may vary as each home is built individually and the precise internal finishes may not always be the same. Please be aware that window and door positions could vary due to plot orientation. It is essential to view the working drawings with our Sales Executive for plot specific detail. Enquire for further information. Wain Homes Policy is continuous product and specification development. Every effort has been made to ensure the accuracy of the information provided in this leaflet at the date of publication but it may be subject to change without notice. Please consult with our Sales Executive to obtain the current specification. You should take appropriate steps to verify any information upon which you wish to rely. The sizes indicated are not intended to be used for carpet sizes, appliance spaces or items of furniture. Elevational treatments may vary to those shown. These particulars are intended for guidance only and their accuracy is not guaranteed. They do not constitute a contract, part of a contract or warranty. (September 2023)





# THE CROMWELL SA

3 BEDROOM HOME



Lounge	3428 x 4960	11'3" x 16'3"
Kitchen/Dining Room	2953 x 4960 (max)	9'8" x 16'3" (max)

Master Bedroom	3428 x 3419	11'3" x 11'3"
Bedroom 2	2991 x 2586	9'10" x 8'6"
Bedroom 3	3145 x 2286	10'4" x 7'6"



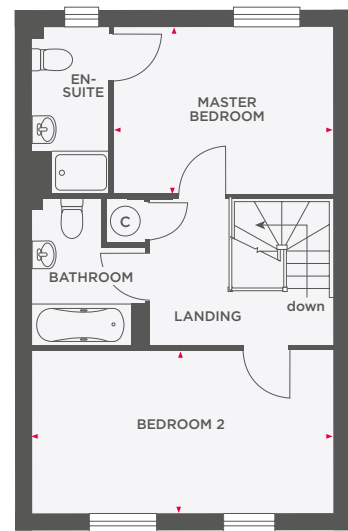
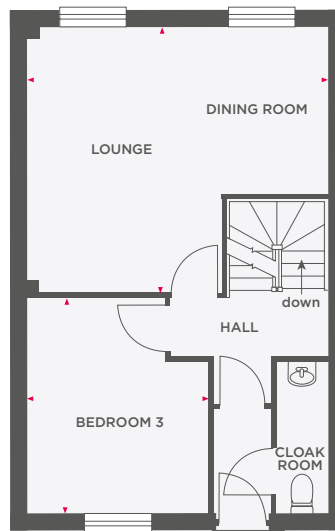
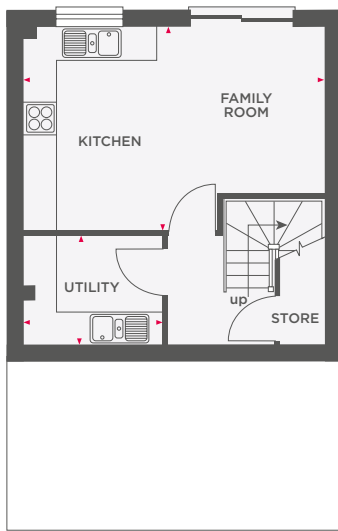
Wain Homes abides by the New Homes Quality Code, an independent industry code introduced to champion quality new homes and better consumer outcomes. Dimensions shown are internal finished dimensions which may vary as each home is built individually and the precise internal finishes may not always be the same. Please be aware that window and door positions could vary due to plot orientation. It is essential to view the working drawings with our Sales Executive for plot specific detail. Enquire for further information. Wain Homes Policy is continuous product and specification development. Every effort has been made to ensure the accuracy of the information provided in this leaflet at the date of publication but it may be subject to change without notice. Please consult with our Sales Executive to obtain the current specification. You should take appropriate steps to verify any information upon which you wish to rely. The sizes indicated are not intended to be used for carpet sizes, appliance spaces or items of furniture. Elevational treatments may vary to those shown. These particulars are intended for guidance only and their accuracy is not guaranteed. They do not constitute a contract, part of a contract or warranty. (September 2023)





# THE CURIE

## 3 BEDROOM HOME



<b>Kitchen/ Family Room</b>	3625 (max) x 4900 (max)	11'10" (max) x 16'1" (max)
<b>Utility</b>	1962 x 1931	6'5" x 6'4"

<b>Master Bedroom</b>	3387 x 2957	11'1" x 9'8"
<b>Bedroom 2</b>	4850 x 2892	15'11" x 9'6"

<b>Lounge</b>	4850 (max) x 4724 (max)	15'11" (max) x 15'6" (max)
<b>Bedroom 3</b>	2736 x 3838	9'0" x 12'7"



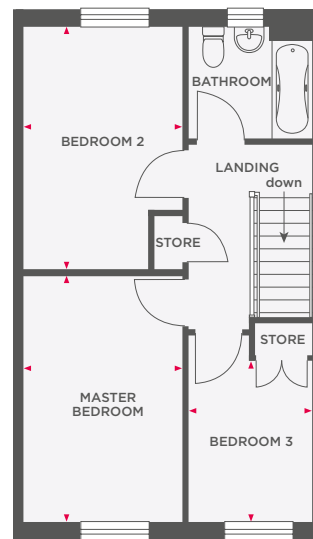
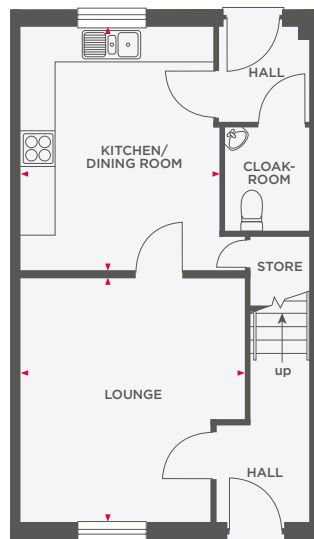
Wain Homes abides by the New Homes Quality Code, an independent industry code introduced to champion quality new homes and better consumer outcomes. Dimensions shown are internal finished dimensions which may vary as each home is built individually and the precise internal finishes may not always be the same. Please be aware that window and door positions could vary due to plot orientation. It is essential to view the working drawings with our Sales Executive for plot specific detail. Enquire for further information. Wain Homes Policy is continuous product and specification development. Every effort has been made to ensure the accuracy of the information provided in this leaflet at the date of publication but it may be subject to change without notice. Please consult with our Sales Executive to obtain the current specification. You should take appropriate steps to verify any information upon which you wish to rely. The sizes indicated are not intended to be used for carpet sizes, appliance spaces or items of furniture. Elevational treatments may vary to those shown. These particulars are intended for guidance only and their accuracy is not guaranteed. They do not constitute a contract, part of a contract or warranty. (May 2024)





# THE DARWIN

3 BEDROOM HOME WITH PARKING



Lounge	3940 (max) x 4268	12'11" (max) x 14'0"
Kitchen/Dining Room	3502 (max) x 4249	11'6" (max) x 13'11"

Master Bedroom	2802 x 4325	9'2" x 14'2"
Bedroom 2	2802 x 4242	9'2" x 13'11"
Bedroom 3	2165 x 2828	7'1" x 9'3"



Wain Homes abides by the New Homes Quality Code, an independent industry code introduced to champion quality new homes and better consumer outcomes. Dimensions shown are internal finished dimensions which may vary as each home is built individually and the precise internal finishes may not always be the same. Please be aware that window and door positions could vary due to plot orientation. It is essential to view the working drawings with our Sales Executive for plot specific detail. Enquire for further information. Wain Homes Policy is continuous product and specification development. Every effort has been made to ensure the accuracy of the information provided in this leaflet at the date of publication but it may be subject to change without notice. Please consult with our Sales Executive to obtain the current specification. You should take appropriate steps to verify any information upon which you wish to rely. The sizes indicated are not intended to be used for carpet sizes, appliance spaces or items of furniture. Elevational treatments may vary to those shown. These particulars are intended for guidance only and their accuracy is not guaranteed. They do not constitute a contract, part of a contract or warranty. (September 2023)





# THE FRANKLIN

## 3 BEDROOM HOME



Kitchen/ Dining Room	2763 x 5644	9'1" x 16'0"
-------------------------	-------------	--------------

Master Bedroom	3399 x 2892	11'2" x 9'6"
Bedroom 2	3851 (max) x 3417 (max)	15'11" (max) x 11'2" (max)

Lounge/ Dining Room	4850 (max) x 4730 (max)	15'11" (max) x 15'6" (max)
Bedroom 3	2763 x 3832	9'1" x 12'7"



Wain Homes abides by the New Homes Quality Code, an independent industry code introduced to champion quality new homes and better consumer outcomes. Dimensions shown are internal finished dimensions which may vary as each home is built individually and the precise internal finishes may not always be the same. Please be aware that window and door positions could vary due to plot orientation. It is essential to view the working drawings with our Sales Executive for plot specific detail. Enquire for further information. Wain Homes Policy is continuous product and specification development. Every effort has been made to ensure the accuracy of the information provided in this leaflet at the date of publication but it may be subject to change without notice. Please consult with our Sales Executive to obtain the current specification. You should take appropriate steps to verify any information upon which you wish to rely. The sizes indicated are not intended to be used for carpet sizes, appliance spaces or items of furniture. Elevational treatments may vary to those shown. These particulars are intended for guidance only and their accuracy is not guaranteed. They do not constitute a contract, part of a contract or warranty. (May 2024)

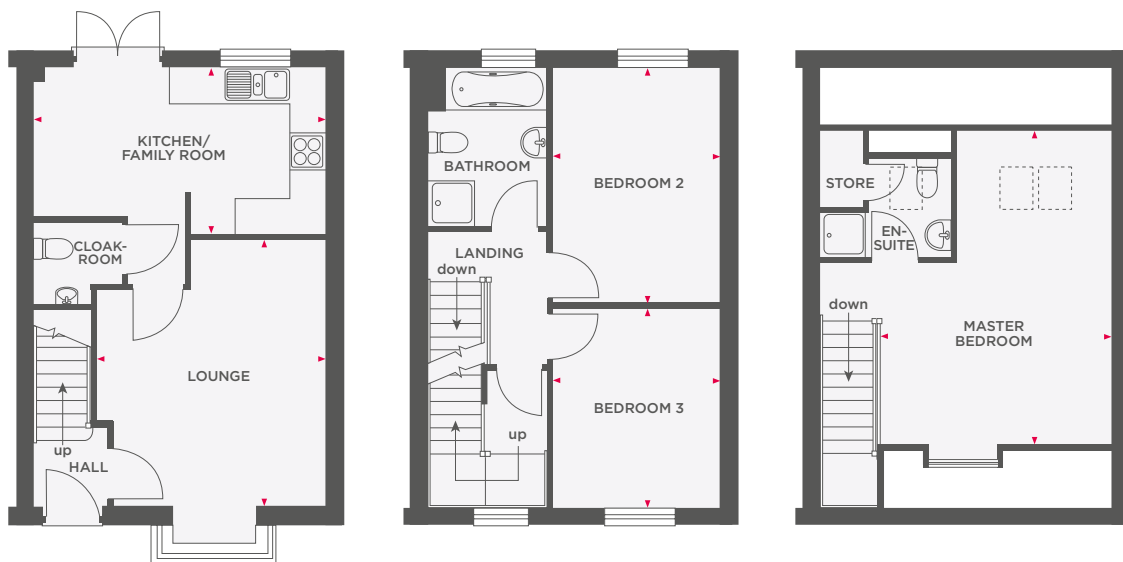






# THE HANBURY

3 BEDROOM HOME WITH PARKING



<b>Lounge</b>	3861 (max) x 4523 (max)	12'8" (max) x 14'10" (max)
<b>Kitchen/ Family Room</b>	2795 (max) x 4900	9'2" (max) x 16'1"

<b>Bedroom 2</b>	2816 x 3952	9'3" x 13'0"
<b>Bedroom 3</b>	2816 x 3348	9'3" x 11'0"

<b>Master Bedroom</b>	3899 (max) x 5313 (max)	12'10" (max) x 17'5" (max)
-----------------------	-------------------------	----------------------------



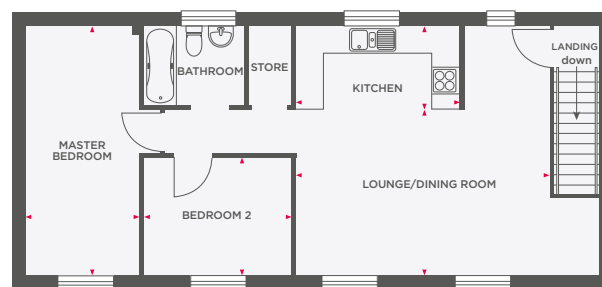
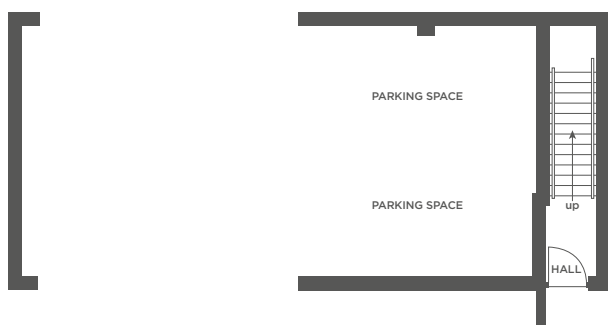
Wain Homes abides by the New Homes Quality Code, an independent industry code introduced to champion quality new homes and better consumer outcomes. Dimensions shown are internal finished dimensions which may vary as each home is built individually and the precise internal finishes may not always be the same. Please be aware that window and door positions could vary due to plot orientation. It is essential to view the working drawings with our Sales Executive for plot specific detail. Enquire for further information. Wain Homes Policy is continuous product and specification development. Every effort has been made to ensure the accuracy of the information provided in this leaflet at the date of publication but it may be subject to change without notice. Please consult with our Sales Executive to obtain the current specification. You should take appropriate steps to verify any information upon which you wish to rely. The sizes indicated are not intended to be used for carpet sizes, appliance spaces or items of furniture. Elevational treatments may vary to those shown. These particulars are intended for guidance only and their accuracy is not guaranteed. They do not constitute a contract, part of a contract or warranty. (September 2023)





# THE CLAREMONT

## 2 BEDROOM COACH HOUSE



Lounge/Dining Room	5526 x 3597	18'1" x 11'9"
Kitchen	3552 x 1803	11'8" x 5'11"
Master Bedroom	5400 x 2441	17'8" x 8'0"
Bedroom 2	3222 x 2541	10'7" x 8'4"



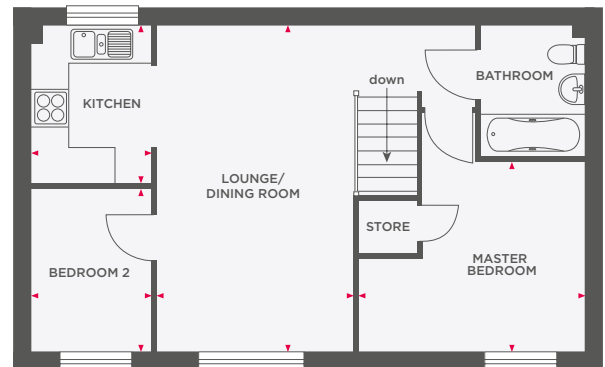
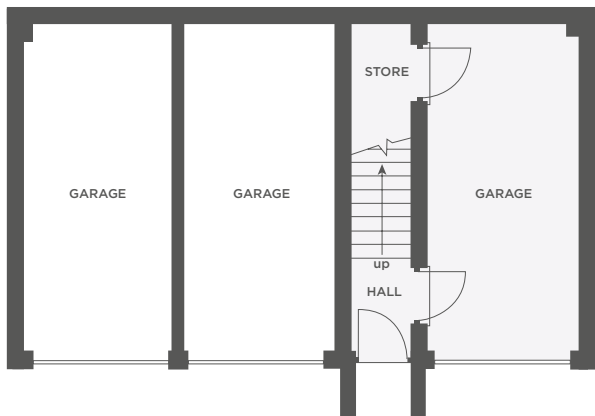
Wain Homes abides by the New Homes Quality Code, an independent industry code introduced to champion quality new homes and better consumer outcomes. Dimensions shown are internal finished dimensions which may vary as each home is built individually and the precise internal finishes may not always be the same. Please be aware that window and door positions could vary due to plot orientation. It is essential to view the working drawings with our Sales Executive for plot specific detail. Enquire for further information. Wain Homes Policy is continuous product and specification development. Every effort has been made to ensure the accuracy of the information provided in this leaflet at the date of publication but it may be subject to change without notice. Please consult with our Sales Executive to obtain the current specification. You should take appropriate steps to verify any information upon which you wish to rely. The sizes indicated are not intended to be used for carpet sizes, appliance spaces or items of furniture. Elevational treatments may vary to those shown. These particulars are intended for guidance only and their accuracy is not guaranteed. They do not constitute a contract, part of a contract or warranty. (September 2023)





# THE DUNHAM

2 BEDROOM COACH HOUSE WITH GARAGE



Lounge/ Dining Room	5400 x 3283	17'8" x 10'9"
Kitchen	1973 x 2610	6'5" x 8'6"
Master Bedroom	3734 (max) x 3147 (max)	12'3" (max) x 10'4" (max)
Bedroom 2	1973 x 2702	6'5" x 8'10"



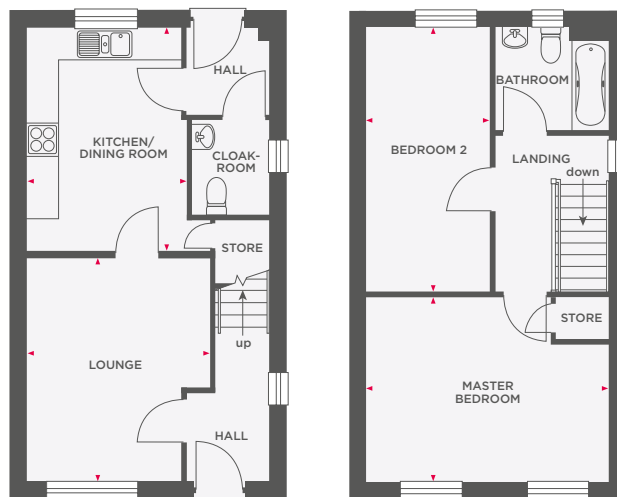
Wain Homes abides by the New Homes Quality Code, an independent industry code introduced to champion quality new homes and better consumer outcomes. Dimensions shown are internal finished dimensions which may vary as each home is built individually and the precise internal finishes may not always be the same. Please be aware that window and door positions could vary due to plot orientation. It is essential to view the working drawings with our Sales Executive for plot specific detail. Enquire for further information. Wain Homes Policy is continuous product and specification development. Every effort has been made to ensure the accuracy of the information provided in this leaflet at the date of publication but it may be subject to change without notice. Please consult with our Sales Executive to obtain the current specification. You should take appropriate steps to verify any information upon which you wish to rely. The sizes indicated are not intended to be used for carpet sizes, appliance spaces or items of furniture. Elevational treatments may vary to those shown. These particulars are intended for guidance only and their accuracy is not guaranteed. They do not constitute a contract, part of a contract or warranty. (September 2023)

**Wain**  
HOMES



# THE HOCKNEY

## 2 BEDROOM HOME



Lounge	3490 (max) x 4318	11'5" (max) x 14'2"
Kitchen/Dining Room	3053 x 4318	10'0" x 14'2"

Master Bedroom	4618 x 3526	15'2" x 11'7"
Bedroom 2	2353 x 5042	7'9" x 16'6"



Wain Homes abides by the New Homes Quality Code, an independent industry code introduced to champion quality new homes and better consumer outcomes. Dimensions shown are internal finished dimensions which may vary as each home is built individually and the precise internal finishes may not always be the same. Please be aware that window and door positions could vary due to plot orientation. It is essential to view the working drawings with our Sales Executive for plot specific detail. Enquire for further information. Wain Homes Policy is continuous product and specification development. Every effort has been made to ensure the accuracy of the information provided in this leaflet at the date of publication but it may be subject to change without notice. Please consult with our Sales Executive to obtain the current specification. You should take appropriate steps to verify any information upon which you wish to rely. The sizes indicated are not intended to be used for carpet sizes, appliance spaces or items of furniture. Elevational treatments may vary to those shown. These particulars are intended for guidance only and their accuracy is not guaranteed. They do not constitute a contract, part of a contract or warranty. (September 2023)

