


Wain
HOMES



A place that lets you be you.
That says everything about you.
That feels good, feels right.
Where life can be beautifully imperfect.
And you love every moment of it.

YOUR KIND OF *perfect*

LITTLE KEYFORD ON THE GREEN DEVELOPMENT PLAN



2 Bedroom House

- Tulipwood
- Underwood

3 Bedroom House

- Lavender
- Whitebeam

4 Bedroom House

- Hawthorn
- Hazel
- Hornbeam

5 Bedroom House

- Larch
- Affordable Housing



Wain Homes abides by the New Homes Quality Code, an independent industry code introduced to champion quality new homes and better consumer outcomes. Wain Homes Policy is continuous product and specification development. Plans and images are shown for illustrative purposes only and the final layout and development may vary from that shown. Every effort has been made to ensure the accuracy of the information provided in this leaflet at the date of publication but it may be subject to change without notice. Please consult with our Sales Executive to obtain the current specification. You should take appropriate steps to verify any information upon which you wish to rely. These particulars are intended for guidance only and their accuracy is not guaranteed. They do not constitute a contract, part of a contract or warranty. (February 2024)



KEYFORD ON THE GREEN SPECIFICATION

SILVER SPECIFICATION DETAILS

TULIPWOOD | UNDERWOOD | LAVENDER | WHITEBEAM

KITCHENS

- Luxury Fitted Kitchen with a Choice of Finishes*
- Laminate Worktops to Kitchen with Matching Upstands
- Stainless Steel AEG Single Electric Oven
- AEG Induction Hob
- Electrolux Stainless Steel Extractor Fan
- Stainless Steel One and a Half Bowl Sink to Kitchen
- Hansgrohe Single Level Kitchen Mixer
- LED Strip Light
- 60cm Glass Splashback
- Oak Cutlery Tray

BATHROOMS

- Roca Sanitaryware
- Hansgrohe Brassware
- Thermostatic Showers and Bath Shower Mixers to En -suites and Bathrooms
- Full Height Tiling to all Shower Enclosures
- Bathroom and En-suites to be Half Tiled with a Choice of Wall Tiles From Tileflair*
- Shaver Sockets to all Bathrooms and En-suites

BEDROOMS

- Television Aerial Point to Master Bedroom
- Telephone Point to Master Bedroom
- Data Point with Cat 6 Wiring to Master Bedroom

HEATING SYSTEMS

- Mitsubishi Air Source Heat Pumps
- Mitsubishi Smart Heating Thermostat

OTHER INTERNAL FEATURES

- All Ceilings to be Painted White
- All Walls to be Painted Wainhomes Soft Cream Finish
- Oak Handrail and Newel Caps
- Television Aerial Point to Lounge
- Telephone Point to Lounge
- Data Points with Cat 6 Wiring to Lounge and Family Room (where applicable)
- USB Sockets to Lounge, Kitchen, Family Room, all Bedrooms and Study (where applicable)
- Deta Stainless Steel Sockets to Kitchen and Adjoining Room
- 5-Panel Oak Doors
- White Downlights to the Kitchen Area

EXTERNAL FEATURES

- White PVCu Double Glazed Windows
- White BiFold Doors
- White PVCu Fascia & Soffits
- GRP Composite Front and Rear Doors
- Black Rainwater Goods
- Doorbell
- External Lights to Front and Rear
- External Tap
- Power and Lighting to all Integral and Detached Garages within the curtilage of the plot
- Gardens Turfed/Landscaped to the Front
- Gardens Rotavated to Rear
- Electric Car Charging Unit
- PV Solar Panels to Roof

WARRANTIES

- 10 Year NHBC Buildmark Warranty
- 2 Year Wain Homes Warranty



AEG



Honeywell



*SUBJECT TO BUILD STAGE

Wain Homes abides by the New Homes Quality Code, an independent industry code introduced to champion quality new homes and better consumer outcomes. Wain Homes Policy is continuous product and specification development. Images shown are for illustrative purposes only. Every effort has been made to ensure the accuracy of the information provided in this leaflet at the date of publication but it may be subject to change without notice. Specification choices are subject to build stage. Please consult with our Sales Executive to obtain the current specification or the specification of any particular plot. You should take appropriate steps to verify any information upon which you wish to rely. These particulars are intended for guidance only and their accuracy is not guaranteed. They do not constitute a contract, part of a contract or warranty. (October 2023)



KEYFORD ON THE GREEN SPECIFICATION

GOLD SPECIFICATION DETAILS

HAWTHORN | HAZEL | HORNBEAM

KITCHENS AND UTILITY

- Luxury Fitted Kitchen with a Choice of Finishes*
- Laminate Worktops to Kitchen with Matching Upstands
- Stainless Steel AEG Double Electric Oven
- AEG Induction Hob
- Electrolux Stainless Steel Extractor Fan
- Integrated Zanussi Fridge Freezer (4 Bed properties only)
- Stainless Steel One and a Half Bowl Sink to Kitchen
- Hansgrohe Single Level Kitchen Mixer
- LED Strip Light
- 90cm Glass Splashback
- Oak Cutlery Tray

BATHROOMS

- Roca Sanitaryware
- Hansgrohe Brassware
- Thermostatic Showers and Bath Shower Mixers to En -suites and Bathrooms
- Full Height Tiling to all Shower Enclosures
- Bathroom and En-suites to be Half Tiled with a Choice of Wall Tiles From Tileflair*
- Shaver Sockets to all Bathrooms and En-suites

BEDROOMS

- Television Aerial Point to Master Bedroom
- Telephone Point to Master Bedroom
- Data Point with Cat 6 Wiring to Master Bedroom

HEATING SYSTEMS

- Mitsubishi Air Source Heat Pumps
- Mitsubishi Smart Heating Thermostat

OTHER INTERNAL FEATURES

- All Ceilings to be Painted White
- All Walls to be Painted Wainhomes Soft Cream Finish
- Oak Handrail and Newel Caps
- Television Aerial Point to Lounge
- Telephone Point to Lounge
- Data Points with Cat 6 Wiring to Lounge and Family Room (where applicable)
- USB Sockets to Lounge, Kitchen, Family Room, all Bedrooms and Study (where applicable)
- Deta Stainless Steel Sockets to Kitchen and Adjoining Room
- Fitted Security Alarm
- 5-Panel Oak Doors
- White Downlights to the Kitchen Area

EXTERNAL FEATURES

- White PVCu Double Glazed Windows
- White BiFold Doors
- White PVCu Fascia & Soffits
- GRP Composite Front and Rear Doors
- Black Rainwater Goods
- Doorbell
- External Lights to Front and Rear
- External Tap
- Power and Lighting to all Integral and Detached Garages within the curtilage of the plot
- Gardens Turfed/Landscaped to the Front
- Gardens Rotavated to Rear
- Electric Car Charging Unit
- PV Solar Panels to Roof

WARRANTIES

- 10 Year NHBC Buildmark Warranty
- 2 Year Wain Homes Warranty



AEG



Honeywell



*SUBJECT TO BUILD STAGE

Wain Homes abides by the New Homes Quality Code, an independent industry code introduced to champion quality new homes and better consumer outcomes. Wain Homes Policy is continuous product and specification development. Images shown are for illustrative purposes only. Every effort has been made to ensure the accuracy of the information provided in this leaflet at the date of publication but it may be subject to change without notice. Specification choices are subject to build stage. Please consult with our Sales Executive to obtain the current specification or the specification of any particular plot. You should take appropriate steps to verify any information upon which you wish to rely. These particulars are intended for guidance only and their accuracy is not guaranteed. They do not constitute a contract, part of a contract or warranty. (October 2023)



KEYFORD ON THE GREEN SPECIFICATION

PLATINUM SPECIFICATION DETAILS

LARCH

KITCHENS

- Luxury Fitted Kitchen with a Choice of Finishes*
- Silestone Worktops to Kitchen with Matching Upstands
- Stainless Steel AEG Double Electric Oven
- AEG Induction Hob
- Electrolux Stainless Steel Extractor Fan
- Integrated Zanussi Fridge Freezer
- Integrated Zanussi Dishwasher
- Stainless Steel One and a Half Bowl Sink to Kitchen
- Hansgrohe Single Level Kitchen Mixer
- LED Strip Light
- 90cm Glass Splashback
- Oak Cutlery Tray

BATHROOMS

- Roca Sanitaryware
- Hansgrohe Brassware
- Thermostatic Showers and Bath Shower Mixers to En -suites and Bathrooms
- Full Height Tiling to all Shower Enclosures
- Bathroom and En-suites to be Half Tiled with a Choice of Wall Tiles From Tileflair*
- Shaver Sockets to all Bathrooms and En-suites

BEDROOMS

- Television Aerial Point to Master Bedroom
- Telephone Point to Master Bedroom
- Data Point with Cat 6 Wiring to Master Bedroom

HEATING SYSTEMS

- Mitsubishi Air Source Heat Pumps
- Mitsubishi Smart Heating Thermostat

OTHER INTERNAL FEATURES

- All Ceilings to be Painted White
- All Walls to be Painted Wainhomes Soft Cream Finish
- Oak Handrail and Newel Caps
- Television Aerial Point to Lounge
- Telephone Point to Lounge
- Data Points with Cat 6 Wiring to Lounge and Family Room (where applicable)
- USB Sockets to Lounge, Kitchen, Family Room, all Bedrooms and Study (where applicable)
- Deta Stainless Steel Sockets to Kitchen and Adjoining Room
- Fitted Security Alarm
- 5-Panel Oak Doors
- White Downlights to the Kitchen Area and all Wet Rooms

EXTERNAL FEATURES

- White PVCu Double Glazed Windows
- White BiFold Doors
- White PVCu Fascia & Soffits
- GRP Composite Front and Rear Doors
- Black Rainwater Goods
- Doorbell
- External Lights to Front and Rear
- External Tap
- Power and Lighting to all Integral and Detached Garages within the curtilage of the plot
- Gardens Turfed/Landscaped to the Front
- Gardens Rotavated to Rear
- Electric Car Charging Unit
- PV Solar Panels to Roof

WARRANTIES

- 10 Year NHBC Buildmark Warranty
- 2 Year Wain Homes Warranty



AEG



Honeywell



*SUBJECT TO BUILD STAGE

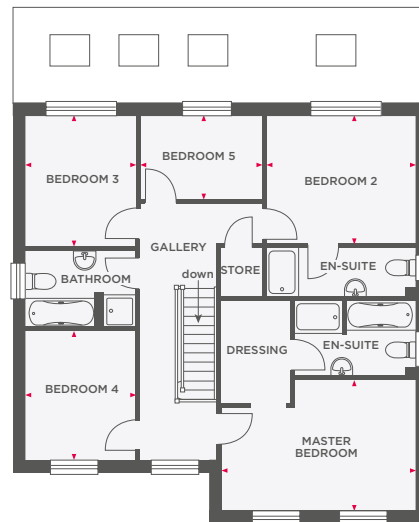
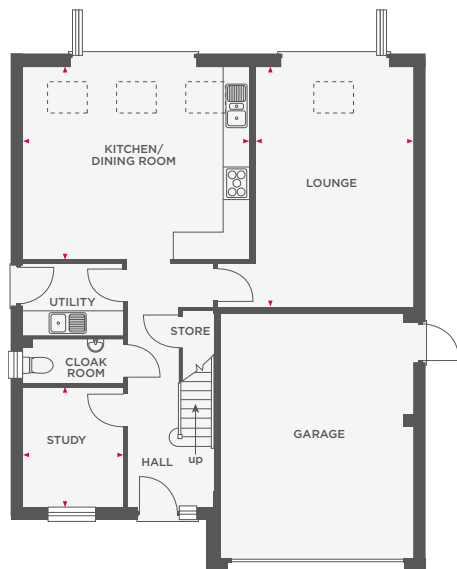
Wain Homes abides by the New Homes Quality Code, an independent industry code introduced to champion quality new homes and better consumer outcomes. Wain Homes Policy is continuous product and specification development. Images shown are for illustrative purposes only. Every effort has been made to ensure the accuracy of the information provided in this leaflet at the date of publication but it may be subject to change without notice. Specification choices are subject to build stage. Please consult with our Sales Executive to obtain the current specification or the specification of any particular plot. You should take appropriate steps to verify any information upon which you wish to rely. These particulars are intended for guidance only and their accuracy is not guaranteed. They do not constitute a contract, part of a contract or warranty. (October 2023)





THE LARCH

5 BEDROOM DETACHED HOME WITH DOUBLE GARAGE



Lounge	3850 x 5885	12'7" x 19'3"
Kitchen/Dining Room	5573 x 4735	18'3" x 15'6"
Study	2450 x 2942	8'0" x 9'7"

Master Bedroom	4735 x 3201	15'6" x 10'6"
Bedroom 2	3663 x 3146	12'0" x 10'3"
Bedroom 3	2713 x 3219	8'10" x 10'6"
Bedroom 4	2713 x 3178	8'10" x 10'5"
Bedroom 5	2997 x 2063	9'10" x 6'9"



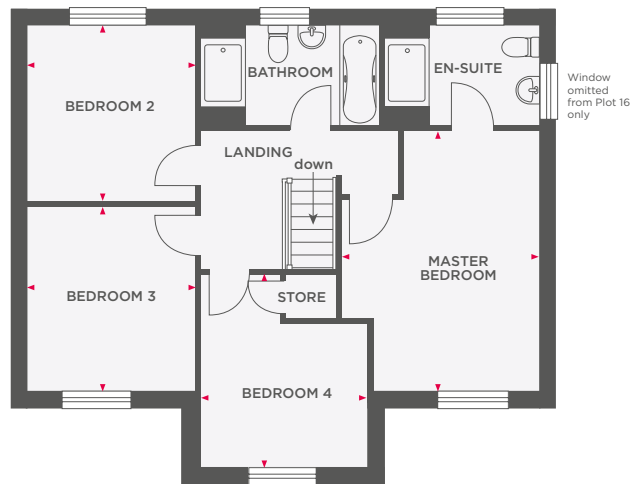
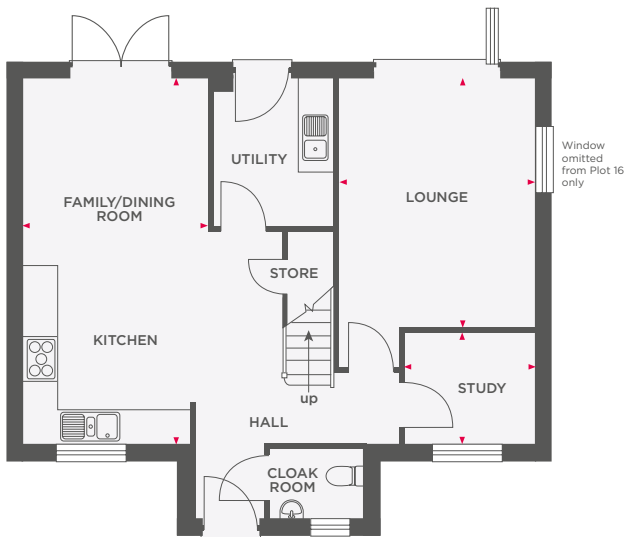
Wain Homes abides by the New Homes Quality Code, an independent industry code introduced to champion quality new homes and better consumer outcomes. Dimensions shown are internal finished dimensions which may vary as each home is built individually and the precise internal finishes may not always be the same. Please be aware that window and door positions could vary due to plot orientation. It is essential to view the working drawings with our Sales Executive for plot specific detail. Enquire for further information. Wain Homes Policy is continuous product and specification development. Every effort has been made to ensure the accuracy of the information provided in this leaflet at the date of publication but it may be subject to change without notice. Please consult with our Sales Executive to obtain the current specification. You should take appropriate steps to verify any information upon which you wish to rely. The sizes indicated are not intended to be used for carpet sizes, appliance spaces or items of furniture. Elevational treatments may vary to those shown. These particulars are intended for guidance only and their accuracy is not guaranteed. They do not constitute a contract, part of a contract or warranty. (January 2024)





THE HAZEL

4 BEDROOM DETACHED HOME WITH STUDY



Lounge	3400 x 4363	11'1" x 14'3"
Kitchen/Dining Room	3255 x 6423	10'7" x 21'0"
Study	2255 x 1973	7'4" x 6'5"

Master Bedroom	3462 x 4584	11'4" x 15'0"
Bedroom 2	2925 x 3122	9'7" x 10'2"
Bedroom 3	2949 x 3212	9'8" x 10'6"
Bedroom 4	2935 x 3320	9'7" x 10'10"



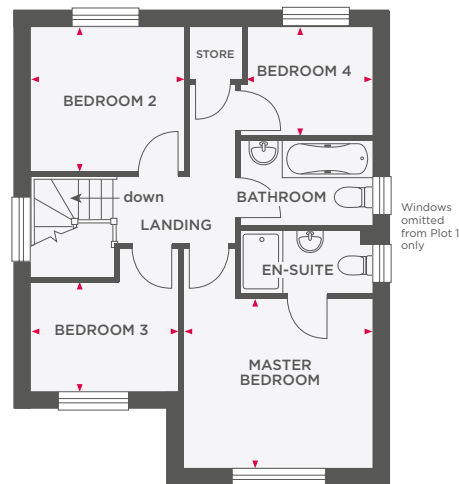
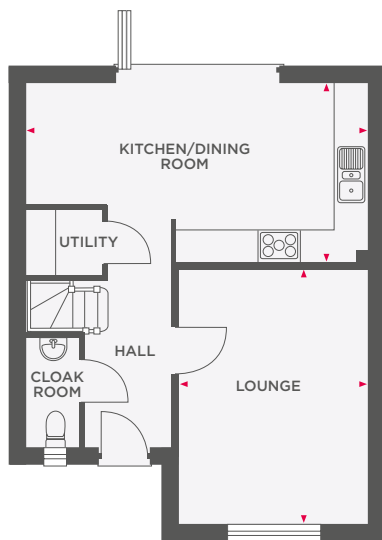
Wain Homes abides by the New Homes Quality Code, an independent industry code introduced to champion quality new homes and better consumer outcomes. Dimensions shown are internal finished dimensions which may vary as each home is built individually and the precise internal finishes may not always be the same. Please be aware that window and door positions could vary due to plot orientation. It is essential to view the working drawings with our Sales Executive for plot specific detail. Enquire for further information. Wain Homes Policy is continuous product and specification development. Every effort has been made to ensure the accuracy of the information provided in this leaflet at the date of publication but it may be subject to change without notice. Please consult with our Sales Executive to obtain the current specification. You should take appropriate steps to verify any information upon which you wish to rely. The sizes indicated are not intended to be used for carpet sizes, appliance spaces or items of furniture. Elevational treatments may vary to those shown. These particulars are intended for guidance only and their accuracy is not guaranteed. They do not constitute a contract, part of a contract or warranty. (January 2024)





THE HAWTHORN

4 BEDROOM DETACHED HOME



Lounge	3610 x 4873	11'10" x 15'11"
Kitchen/Dining Room	6535 x 3425	21'5" x 11'2"

Master Bedroom	3610 x 3250	11'10" x 10'8"
Bedroom 2	2926 x 2780	9'6" x 9'1"
Bedroom 3	2837 x 2097	9'3" x 6'9"
Bedroom 4	2368 x 2093	7'8" x 6'9"



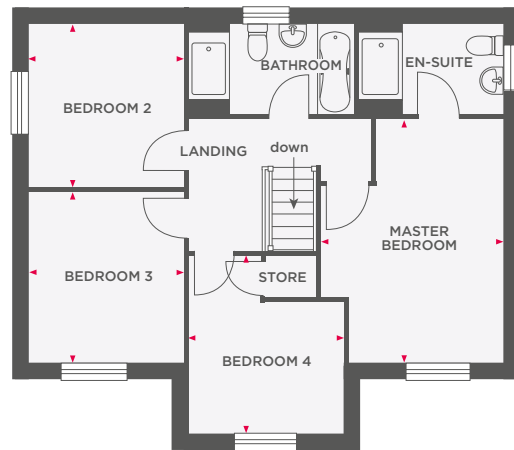
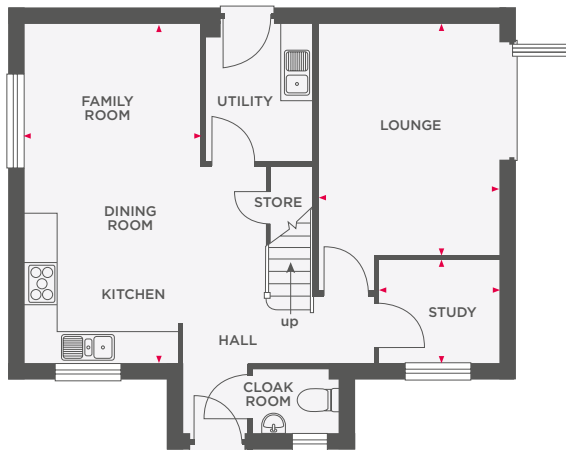
Wain Homes abides by the New Homes Quality Code, an independent industry code introduced to champion quality new homes and better consumer outcomes. Dimensions shown are internal finished dimensions which may vary as each home is built individually and the precise internal finishes may not always be the same. Please be aware that window and door positions could vary due to plot orientation. It is essential to view the working drawings with our Sales Executive for plot specific detail. Enquire for further information. Wain Homes Policy is continuous product and specification development. Every effort has been made to ensure the accuracy of the information provided in this leaflet at the date of publication but it may be subject to change without notice. Please consult with our Sales Executive to obtain the current specification. You should take appropriate steps to verify any information upon which you wish to rely. The sizes indicated are not intended to be used for carpet sizes, appliance spaces or items of furniture. Elevational treatments may vary to those shown. These particulars are intended for guidance only and their accuracy is not guaranteed. They do not constitute a contract, part of a contract or warranty. (January 2024)





THE HORNBEAM

4 BEDROOM DETACHED HOME WITH STUDY



Lounge	3400 x 4363	11'1" x 14'3"
Kitchen/Dining Room	3255 x 6423	10'7" x 21'0"
Study	2255 x 1973	7'4" x 6'5"

Master Bedroom	3462 x 4584	11'4" x 15'0"
Bedroom 2	2925 x 3122	9'7" x 10'2"
Bedroom 3	2949 x 3212	9'8" x 10'6"
Bedroom 4	2935 x 3320	9'7" x 10'10"



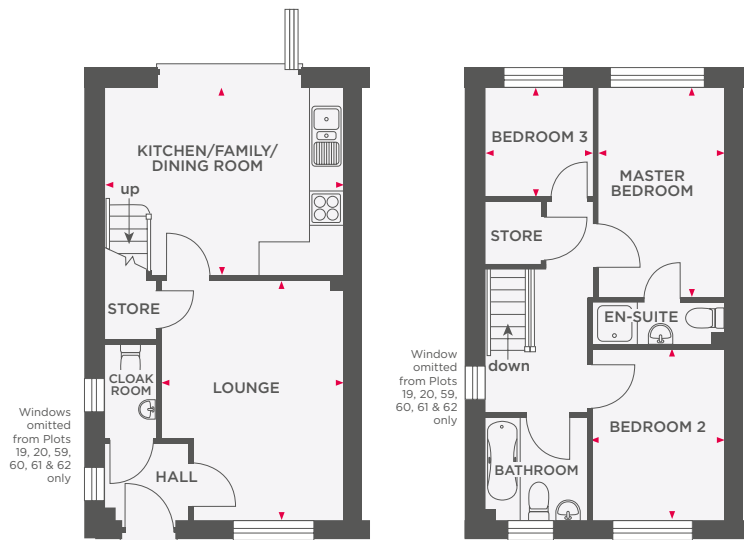
Wain Homes abides by the New Homes Quality Code, an independent industry code introduced to champion quality new homes and better consumer outcomes. Dimensions shown are internal finished dimensions which may vary as each home is built individually and the precise internal finishes may not always be the same. Please be aware that window and door positions could vary due to plot orientation. It is essential to view the working drawings with our Sales Executive for plot specific detail. Enquire for further information. Wain Homes Policy is continuous product and specification development. Every effort has been made to ensure the accuracy of the information provided in this leaflet at the date of publication but it may be subject to change without notice. Please consult with our Sales Executive to obtain the current specification. You should take appropriate steps to verify any information upon which you wish to rely. The sizes indicated are not intended to be used for carpet sizes, appliance spaces or items of furniture. Elevational treatments may vary to those shown. These particulars are intended for guidance only and their accuracy is not guaranteed. They do not constitute a contract, part of a contract or warranty. (January 2024)





THE LAVENDER

3 BEDROOM HOME WITH PARKING



Lounge	3449 x 4472	11'3" x 14'8"
Kitchen/Dining Room	4499 x 3550	14'9" x 11'7"

Master Bedroom	2358 x 3905	7'7" x 12'8"
Bedroom 2	2450 x 3230	8'0" x 10'6"
Bedroom 3	2054 x 2055	6'7" x 6'7"



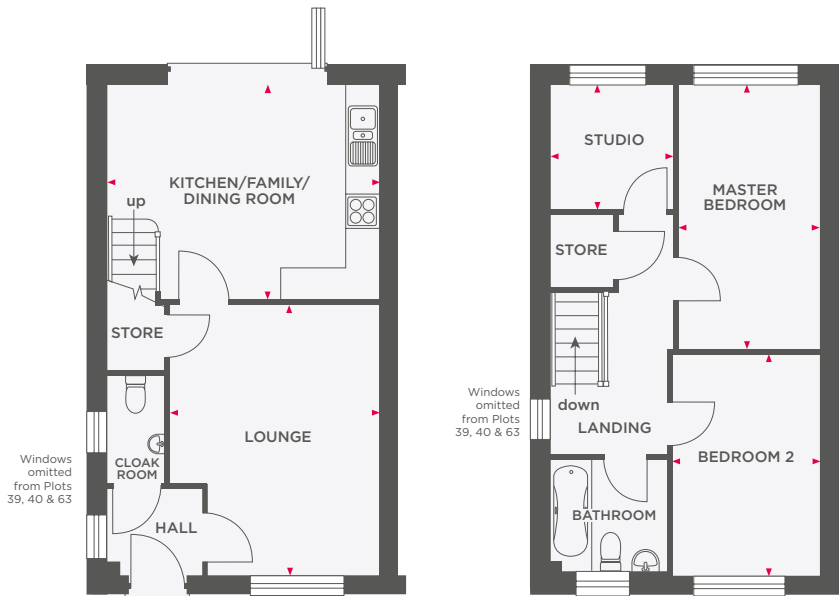
Wain Homes abides by the New Homes Quality Code, an independent industry code introduced to champion quality new homes and better consumer outcomes. Dimensions shown are internal finished dimensions which may vary as each home is built individually and the precise internal finishes may not always be the same. Please be aware that window and door positions could vary due to plot orientation. It is essential to view the working drawings with our Sales Executive for plot specific detail. Enquire for further information. Wain Homes Policy is continuous product and specification development. Every effort has been made to ensure the accuracy of the information provided in this leaflet at the date of publication but it may be subject to change without notice. Please consult with our Sales Executive to obtain the current specification. You should take appropriate steps to verify any information upon which you wish to rely. The sizes indicated are not intended to be used for carpet sizes, appliance spaces or items of furniture. Elevational treatments may vary to those shown. These particulars are intended for guidance only and their accuracy is not guaranteed. They do not constitute a contract, part of a contract or warranty. (January 2024)





THE UNDERWOOD

2 BEDROOM + STUDY HOME WITH PARKING



Lounge	3449 x 4472	11'3" x 14'8"
Kitchen/Dining Room	4499 x 3550	14'9" x 11'7"

Master Bedroom	2358 x 4371	7'7" x 14'4"
Bedroom 2	2450 x 3652	8'0" x 11'9"
Studio	2054 x 2055	6'7" x 6'7"



Wain Homes abides by the New Homes Quality Code, an independent industry code introduced to champion quality new homes and better consumer outcomes. Dimensions shown are internal finished dimensions which may vary as each home is built individually and the precise internal finishes may not always be the same. Please be aware that window and door positions could vary due to plot orientation. It is essential to view the working drawings with our Sales Executive for plot specific detail. Enquire for further information. Wain Homes Policy is continuous product and specification development. Every effort has been made to ensure the accuracy of the information provided in this leaflet at the date of publication but it may be subject to change without notice. Please consult with our Sales Executive to obtain the current specification. You should take appropriate steps to verify any information upon which you wish to rely. The sizes indicated are not intended to be used for carpet sizes, appliance spaces or items of furniture. Elevational treatments may vary to those shown. These particulars are intended for guidance only and their accuracy is not guaranteed. They do not constitute a contract, part of a contract or warranty. (January 2024)





THE WHITEBEAM

3 BEDROOM DETACHED HOME



Lounge	3212 x 5297	10'6" x 17'4"
Kitchen	3656 x 2428	12'0" x 7'10"
Dining/Family Room	2750 x 2870	9'0" x 9'4"

Master Bedroom	3213 x 3327	10'5" x 10'10"
Bedroom 2	2772 x 3071	9'1" x 10'1"
Bedroom 3	2772 x 2139	9'1" x 7'0"



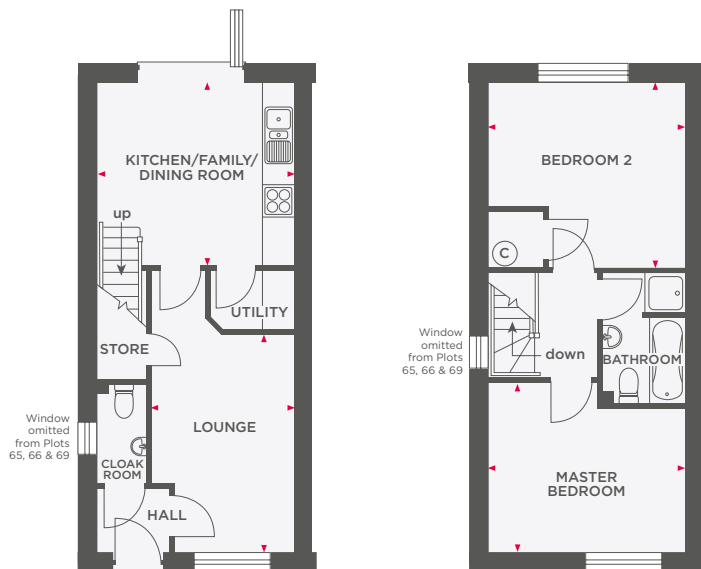
Wain Homes abides by the New Homes Quality Code, an independent industry code introduced to champion quality new homes and better consumer outcomes. Dimensions shown are internal finished dimensions which may vary as each home is built individually and the precise internal finishes may not always be the same. Please be aware that window and door positions could vary due to plot orientation. It is essential to view the working drawings with our Sales Executive for plot specific detail. Enquire for further information. Wain Homes Policy is continuous product and specification development. Every effort has been made to ensure the accuracy of the information provided in this leaflet at the date of publication but it may be subject to change without notice. Please consult with our Sales Executive to obtain the current specification. You should take appropriate steps to verify any information upon which you wish to rely. The sizes indicated are not intended to be used for carpet sizes, appliance spaces or items of furniture. Elevational treatments may vary to those shown. These particulars are intended for guidance only and their accuracy is not guaranteed. They do not constitute a contract, part of a contract or warranty. (January 2024)





THE TULIPWOOD

2 BEDROOM HOME WITH PARKING



Lounge	2830 x 4263	9'3" x 14'0"
Kitchen/Dining Room	3880 x 3597	12'8" x 11'8"

Master Bedroom	3880 x 3290	12'8" x 10'9"
Bedroom 2	3880 x 3672	12'8" x 12'0"



Wain Homes abides by the New Homes Quality Code, an independent industry code introduced to champion quality new homes and better consumer outcomes. Dimensions shown are internal finished dimensions which may vary as each home is built individually and the precise internal finishes may not always be the same. Please be aware that window and door positions could vary due to plot orientation. It is essential to view the working drawings with our Sales Executive for plot specific detail. Enquire for further information. Wain Homes Policy is continuous product and specification development. Every effort has been made to ensure the accuracy of the information provided in this leaflet at the date of publication but it may be subject to change without notice. Please consult with our Sales Executive to obtain the current specification. You should take appropriate steps to verify any information upon which you wish to rely. The sizes indicated are not intended to be used for carpet sizes, appliance spaces or items of furniture. Elevational treatments may vary to those shown. These particulars are intended for guidance only and their accuracy is not guaranteed. They do not constitute a contract, part of a contract or warranty. (January 2024)

