


Wain
HOMES



A place that lets you be you.
That says everything about you.
That feels good, feels right.
Where life can be beautifully imperfect.
And you love every moment of it.

YOUR KIND OF *perfect*

SAXON GATE

WEST

- Bell (BL)
- Brancaster (BC)
- Brunswick (BW)
- Carnglaze (CG)
- Cavendish (CV)
- Churchill (CH)
- Davy (DV)
- Hanbury (H)
- Jenner (J)
- Newton (N)
- Priestley (P)
- Shakespeare (SH)
- Trevithick (T)
- Winchester (WN)
- Wordsworth (WO)
- Wren (WR)
- Affordable Homes for Rent

EAST

- Bell (BL)
- Brancaster (BC)
- Brunswick (BW)
- Cavendish (CV)
- Churchill (CH)
- Dalton (DN)
- Davy (DV)
- Eton (ET)
- Hanbury (H)
- Newton (N)
- Priestley (P)
- Shakespeare (SH)
- Stephenson (ST)
- Trevithick (T)
- Winchester (WN)
- Wordsworth (WO)
- Wren (WR)
- Affordable Homes for Rent



Exeter Road B3213

Wain Homes Policy is continuous product and specification development. Plans and images are shown for illustrative purposes only and the final layout and development may vary from that shown. Every effort has been made to ensure the accuracy of the information provided in this leaflet at the date of publication but it may be subject to change without notice. Please consult with our Sales Executive to obtain the current specification. You should take appropriate steps to verify any information upon which you wish to rely. These particulars are intended for guidance only and their accuracy is not guaranteed. They do not constitute a contract, part of a contract or warranty. (January 2022)

Wain
HOMES

SAXON GATE SPECIFICATION

KITCHENS

- Glass Splashback
- Stainless Steel Electric Oven and Gas Hob, Extractor over (as per plot specific working drawing)
- Worktop and Upstand
- Silestone Worktop as standard (4 & 5 Bed Detached only)
- Soft Closer Drawers and Hinges
- Downlighters
- Under Unit Lighting
- All Appliances as per Kitchen Layout
- USB Charger Socket
- Brushed Chrome Switches/Sockets

BATHROOMS

- Contemporary White Sanitary Ware
- Chrome Bath Pillar Tap
- Shaver Socket to Bathroom and En-suite

WALL TILING

Cloaks

- Wall Tiling to splashback only in Cloaks

Bathroom

- Half Height Tiling throughout
- Full Height to Shower Cubicle
- Full Height Tiling around Bath if Shower over
- Tiled Window Cills where applicable

En-Suites

- Full Height Tiling to Shower Cubicle and Half Height to all Other Walls
- Tiled Window Cills where applicable

HEATING SYSTEM

- Gas Central Heating to all Properties

INTERNAL FEATURES

- Staircase White, Oak Handrail
- Switches and Sockets White to all Rooms except Kitchen
- Wain Home Cream Painted Walls
- BT & TV points Lounge and Bedroom 1
- Wardrobes to Bedroom 1 (4 and 5 Bed Detached only)
- Data Point Bed 1
- Vertical Grooved Oak Internal Doors
- Smoke Detectors
- Pencil Round Skirting Boards and Architraves
- Flat Finish Ceilings to all Rooms in White Matt

EXTERNAL FEATURES

- UPVC Fascia and Soffit Boards
- PVCu Double Glazed to all Windows (except Garage) to suit external elevations
- French Doors and Paved Patio where applicable
- GRP Front/Rear Doors
- Electric Front Door Bell
- 1.8m Palisade Fencing
- Division Fencing 1.8m Palisade
- External Lights to be fitted Front and Rear Elevations, Energy Efficient Fittings (as per plot specific working drawing)
- Paving Slab Paths to serve Front and Side Entrances as per the External Working Drawings
- UPVC Rainwater Goods

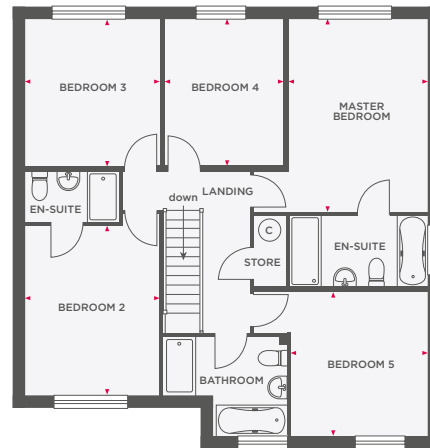
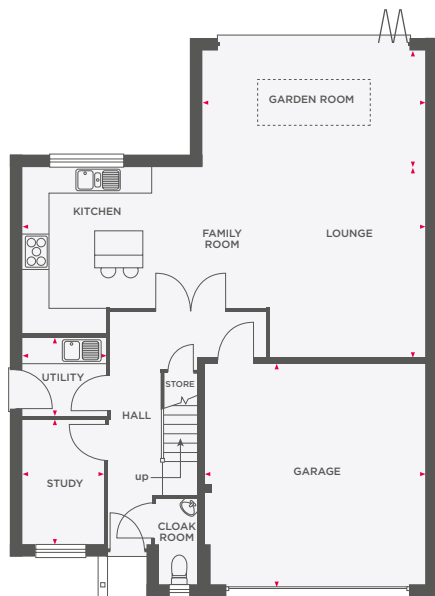
WARRANTIES

- 10 Year NHBC Buildmark Warranty
- 2 Year Wain Homes Warranty



THE CAVENDISH

5 BEDROOM HOME WITH INTEGRAL DOUBLE GARAGE



Kitchen/Family Room	9591 x 4565	31'6" x 15'0"
Lounge	9591 x 4565	31'6" x 15'0"
Garden Room	5350 x 2512	17'7" x 8'3"
Study	1936 x 2983	6'4" x 9'9"
Utility	1991 x 1843	6'6" x 6'1"
Garage	5300 x 5300	17'5" x 17'5"

Master Bedroom	4128 x 4596	13'7" x 15'1"
Bedroom 2	3190 x 4051	10'6" x 13'3"
Bedroom 3	3220 x 3514	10'7" x 11'6"
Bedroom 4	2853 x 3514	9'4" x 11'6"
Bedroom 5	4128 x 3426	13'7" x 11'3"



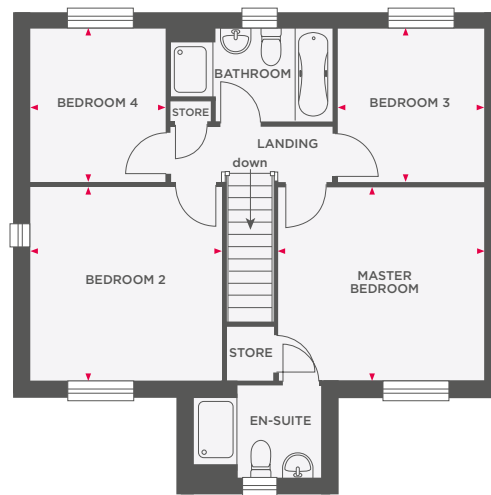
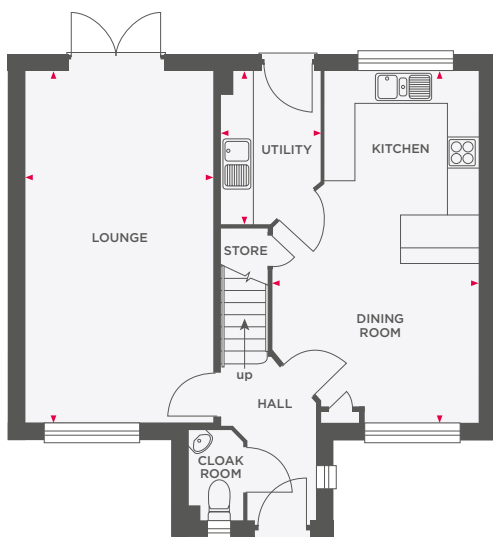
Wain Homes abides by the New Homes Quality Code, an independent industry code introduced to champion quality new homes and better consumer outcomes. Dimensions shown are internal finished dimensions which may vary as each home is built individually and the precise internal finishes may not always be the same. Please be aware that window and door positions could vary due to plot orientation. It is essential to view the working drawings with our Sales Executive for plot specific detail. Enquire for further information. Wain Homes Policy is continuous product and specification development. Every effort has been made to ensure the accuracy of the information provided in this leaflet at the date of publication but it may be subject to change without notice. Please consult with our Sales Executive to obtain the current specification. You should take appropriate steps to verify any information upon which you wish to rely. The sizes indicated are not intended to be used for carpet sizes, appliance spaces or items of furniture. Elevational treatments may vary to those shown. These particulars are intended for guidance only and their accuracy is not guaranteed. They do not constitute a contract, part of a contract or warranty. (October 2023)

Wain
HOMES



THE DAVY

4 BEDROOM HOME



Lounge	3491 x 6535	11'5" x 21'5"
Kitchen/Dining Room	3956 x 6535	13'0" x 21'5"
Utility	1848 x 2822	6'0" x 9'3"

Master Bedroom	3956 x 3605	13'0" x 11'10"
Bedroom 2	3553 x 3605	11'8" x 11'10"
Bedroom 3	2847 x 2842	9'4" x 9'4"
Bedroom 4	2510 x 2842	8'3" x 9'4"



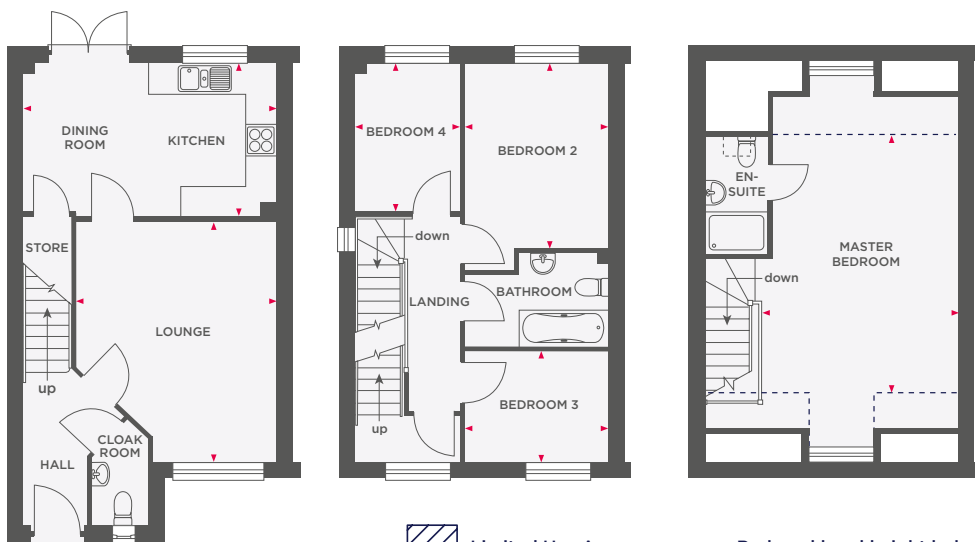
Wain Homes abides by the New Homes Quality Code, an independent industry code introduced to champion quality new homes and better consumer outcomes. Dimensions shown are internal finished dimensions which may vary as each home is built individually and the precise internal finishes may not always be the same. Please be aware that window and door positions could vary due to plot orientation. It is essential to view the working drawings with our Sales Executive for plot specific detail. Enquire for further information. Wain Homes Policy is continuous product and specification development. Every effort has been made to ensure the accuracy of the information provided in this leaflet at the date of publication but it may be subject to change without notice. Please consult with our Sales Executive to obtain the current specification. You should take appropriate steps to verify any information upon which you wish to rely. The sizes indicated are not intended to be used for carpet sizes, appliance spaces or items of furniture. Elevational treatments may vary to those shown. These particulars are intended for guidance only and their accuracy is not guaranteed. They do not constitute a contract, part of a contract or warranty. (October 2023)





THE JENNER

4 BEDROOM HOME WITH PARKING



Lounge	3860 x 4615	12'8" x 15'2"
Kitchen/ Dining Room	4845 x 2955	15'10" x 9'8"

Bedroom 2	2760 x 3560	9'1" x 11'8"
Bedroom 3	2760 x 2125	9'1" x 7'0"
Bedroom 4	2000 x 2840	6'6" x 9'4"

Master Bedroom	3900 x 6420	12'10" x 21'0"
----------------	-------------	----------------



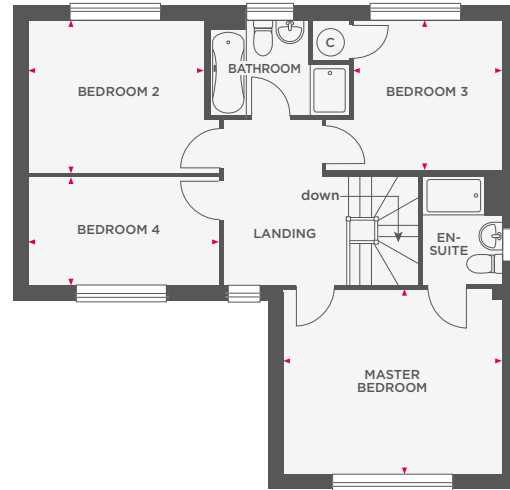
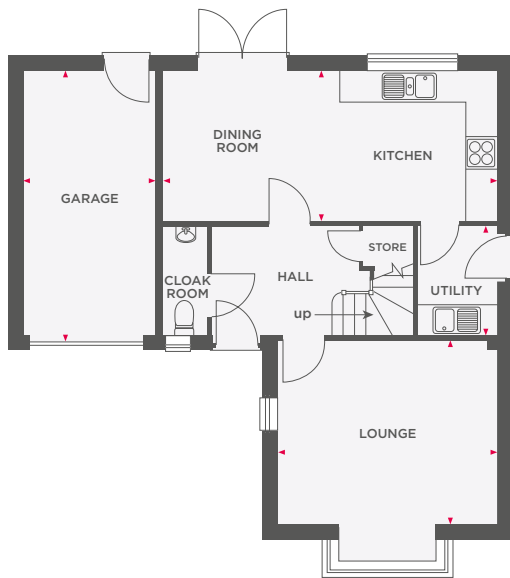
Wain Homes abides by the New Homes Quality Code, an independent industry code introduced to champion quality new homes and better consumer outcomes. Dimensions shown are internal finished dimensions which may vary as each home is built individually and the precise internal finishes may not always be the same. Please be aware that window and door positions could vary due to plot orientation. It is essential to view the working drawings with our Sales Executive for plot specific detail. Enquire for further information. Wain Homes Policy is continuous product and specification development. Every effort has been made to ensure the accuracy of the information provided in this leaflet at the date of publication but it may be subject to change without notice. Please consult with our Sales Executive to obtain the current specification. You should take appropriate steps to verify any information upon which you wish to rely. The sizes indicated are not intended to be used for carpet sizes, appliance spaces or items of furniture. Elevational treatments may vary to those shown. These particulars are intended for guidance only and their accuracy is not guaranteed. They do not constitute a contract, part of a contract or warranty. (October 2023)





THE NEWTON

4 BEDROOM HOME WITH INTEGRAL GARAGE



Lounge	3984 x 4247 (max)	13'1" x 13'11" (max)
Kitchen	3669 x 2910	12'0" x 9'6"
Dining Room	2697 x 2910	8'10" x 9'6"
Utility	2088 x 1521	6'10" x 4'11"
Garage	2587 x 5198	8'6" x 17'1"

Master Bedroom	4247 x 3572	13'11" x 11'8"
Bedroom 2	3440 x 2957	11'3" x 9'8"
Bedroom 3	3152 x 2945	10'4" x 9'8"
Bedroom 4	2098 x 3718	6'10" x 12'2"



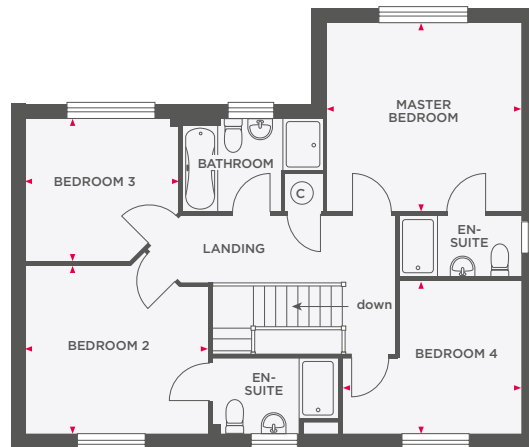
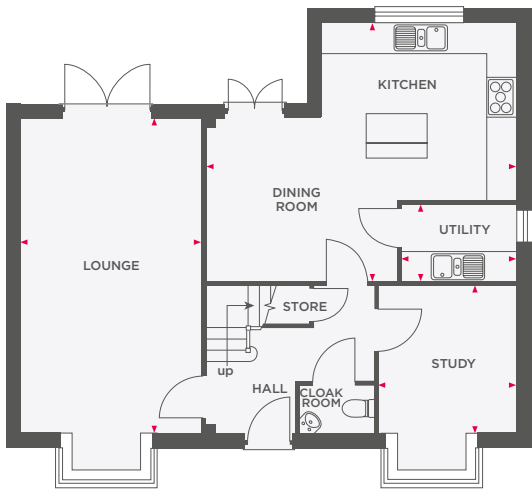
Wain Homes abides by the New Homes Quality Code, an independent industry code introduced to champion quality new homes and better consumer outcomes. Dimensions shown are internal finished dimensions which may vary as each home is built individually and the precise internal finishes may not always be the same. Please be aware that window and door positions could vary due to plot orientation. It is essential to view the working drawings with our Sales Executive for plot specific detail. Enquire for further information. Wain Homes Policy is continuous product and specification development. Every effort has been made to ensure the accuracy of the information provided in this leaflet at the date of publication but it may be subject to change without notice. Please consult with our Sales Executive to obtain the current specification. You should take appropriate steps to verify any information upon which you wish to rely. The sizes indicated are not intended to be used for carpet sizes, appliance spaces or items of furniture. Elevational treatments may vary to those shown. These particulars are intended for guidance only and their accuracy is not guaranteed. They do not constitute a contract, part of a contract or warranty. (October 2023)

Wain
HOMES



THE PRIESTLEY

4 BEDROOM HOME WITH GARAGE



Lounge	6250 x 3566	20'6" x 11'8"
Dining Room/ Kitchen	5100 x 6150 (max)	16'8" x 20'2" (max)
Study	2713 x 2900	8'10" x 9'6"
Utility	2273 x 1501	7'5" x 4'11"

Master Bedroom	3856 x 3735	12'7" x 12'3"
Bedroom 2	3613 x 3324	11'10" x 10'10"
Bedroom 3	3028 x 2833 (max)	9'11" x 9'3" (max)
Bedroom 4	3527 x 3029 (max)	11'6" x 9'11" (max)



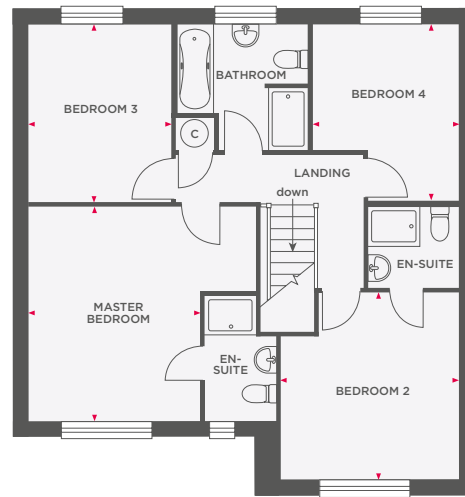
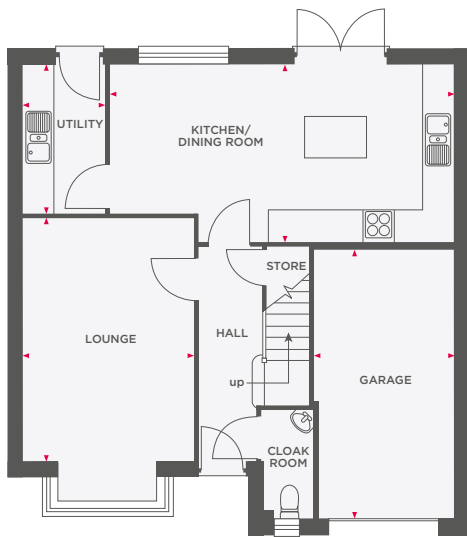
Wain Homes abides by the New Homes Quality Code, an independent industry code introduced to champion quality new homes and better consumer outcomes. Dimensions shown are internal finished dimensions which may vary as each home is built individually and the precise internal finishes may not always be the same. Please be aware that window and door positions could vary due to plot orientation. It is essential to view the working drawings with our Sales Executive for plot specific detail. Enquire for further information. Wain Homes Policy is continuous product and specification development. Every effort has been made to ensure the accuracy of the information provided in this leaflet at the date of publication but it may be subject to change without notice. Please consult with our Sales Executive to obtain the current specification. You should take appropriate steps to verify any information upon which you wish to rely. The sizes indicated are not intended to be used for carpet sizes, appliance spaces or items of furniture. Elevational treatments may vary to those shown. These particulars are intended for guidance only and their accuracy is not guaranteed. They do not constitute a contract, part of a contract or warranty. (October 2023)





THE SHAKESPEARE

4 BEDROOM HOME WITH INTEGRAL GARAGE



Lounge	3273 x 5429	10'9" x 17'10"
Kitchen/ Dining Room	6695 x 3422	22'0" x 11'3"
Utility	1582 x 2866	5'2" x 9'5"

Master Bedroom	4409 x 4165	14'6" x 13'8"
Bedroom 2	3462 x 3632	11'4" x 11'11"
Bedroom 3	2760 x 3432	9'1" x 11'3"
Bedroom 4	2860 x 3415	9'5" x 11'2"



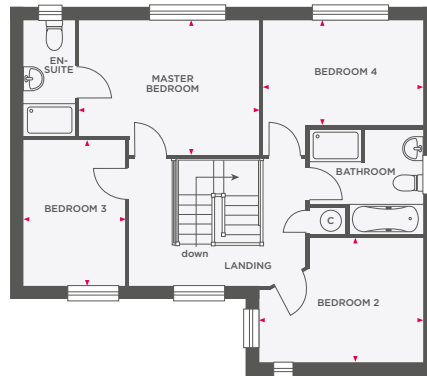
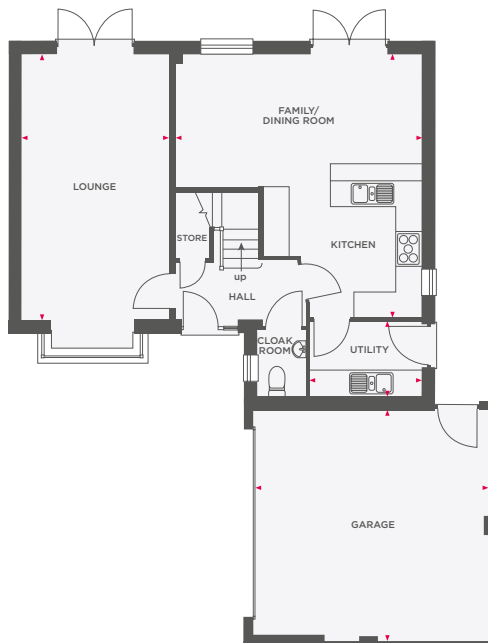
Wain Homes abides by the New Homes Quality Code, an independent industry code introduced to champion quality new homes and better consumer outcomes. Dimensions shown are internal finished dimensions which may vary as each home is built individually and the precise internal finishes may not always be the same. Please be aware that window and door positions could vary due to plot orientation. It is essential to view the working drawings with our Sales Executive for plot specific detail. Enquire for further information. Wain Homes Policy is continuous product and specification development. Every effort has been made to ensure the accuracy of the information provided in this leaflet at the date of publication but it may be subject to change without notice. Please consult with our Sales Executive to obtain the current specification. You should take appropriate steps to verify any information upon which you wish to rely. The sizes indicated are not intended to be used for carpet sizes, appliance spaces or items of furniture. Elevational treatments may vary to those shown. These particulars are intended for guidance only and their accuracy is not guaranteed. They do not constitute a contract, part of a contract or warranty. (October 2023)





THE STEPHENSON

4 BEDROOM DETACHED HOME WITH DOUBLE GARAGE



Lounge	6197 x 3434	20'3" x 11'3"
Kitchen/Family/ Dining Room	6159 x 5763 (max)	20'2" x 18'10" (max)
Utility	1750 x 2617	5'8" x 8'7"
Master Bedroom	3142 x 4213 (max)	10'3" x 13'9" (max)
Bedroom 2	2925 x 3835 (max)	9'7" x 12'6" (max)
Bedroom 3	2382 x 3412 (max)	7'9" x 11'2" (max)
Bedroom 4	3142 x 3747 (max)	10'3" x 12'3" (max)



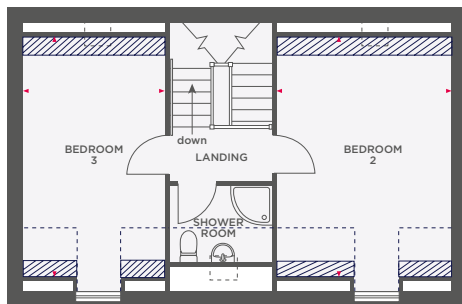
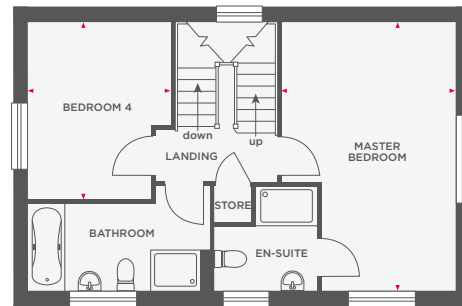
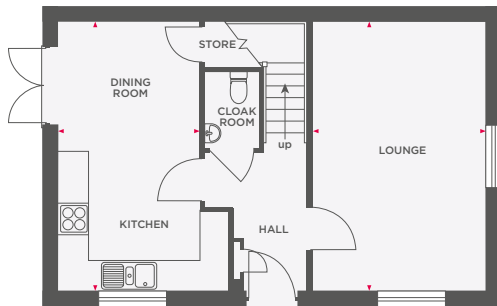
Wain Homes abides by the New Homes Quality Code, an independent industry code introduced to champion quality new homes and better consumer outcomes. Dimensions shown are internal finished dimensions which may vary as each home is built individually and the precise internal finishes may not always be the same. Please be aware that window and door positions could vary due to plot orientation. It is essential to view the working drawings with our Sales Executive for plot specific detail. Enquire for further information. Wain Homes Policy is continuous product and specification development. Every effort has been made to ensure the accuracy of the information provided in this leaflet at the date of publication but it may be subject to change without notice. Please consult with our Sales Executive to obtain the current specification. You should take appropriate steps to verify any information upon which you wish to rely. The sizes indicated are not intended to be used for carpet sizes, appliance spaces or items of furniture. Elevational treatments may vary to those shown. These particulars are intended for guidance only and their accuracy is not guaranteed. They do not constitute a contract, part of a contract or warranty. (October 2023)

Wain
HOMES



THE WINCHESTER

4 BEDROOM HOME



Limited Use Area

Reduced head height below 1.5m

Lounge	3390 x 5290	11'1" x 17'4"
Kitchen/ Family Room	2800 x 5290	9'2" x 17'4"
Master Bedroom	3450 x 5290	11'3" x 17'4"
Bedroom 4	2800 x 3500	9'2" x 11'5"
Bedroom 2	3450 x 4770	11'3" x 15'8"
Bedroom 3	2800 x 4770	9'2" x 15'8"



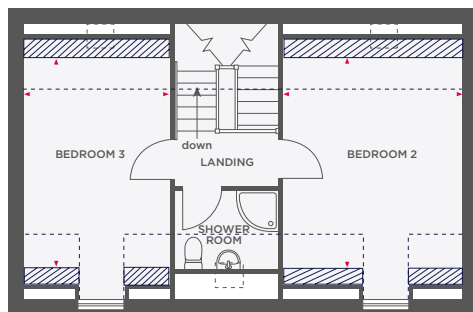
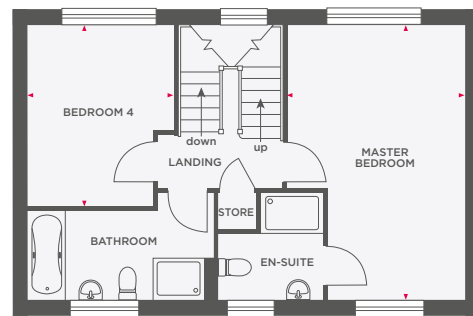
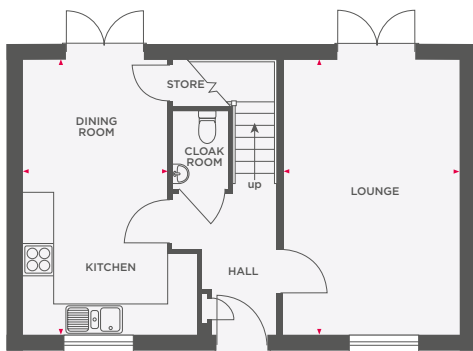
Wain Homes abides by the New Homes Quality Code, an independent industry code introduced to champion quality new homes and better consumer outcomes. Dimensions shown are internal finished dimensions which may vary as each home is built individually and the precise internal finishes may not always be the same. Please be aware that window and door positions could vary due to plot orientation. It is essential to view the working drawings with our Sales Executive for plot specific detail. Enquire for further information. Wain Homes Policy is continuous product and specification development. Every effort has been made to ensure the accuracy of the information provided in this leaflet at the date of publication but it may be subject to change without notice. Please consult with our Sales Executive to obtain the current specification. You should take appropriate steps to verify any information upon which you wish to rely. The sizes indicated are not intended to be used for carpet sizes, appliance spaces or items of furniture. Elevational treatments may vary to those shown. These particulars are intended for guidance only and their accuracy is not guaranteed. They do not constitute a contract, part of a contract or warranty. (October 2023)

Wain
HOMES



THE WORDSWORTH

4 BEDROOM HOME WITH GARAGE



Limited Use Area

Reduced head height below 1.5m

Lounge	3390 x 5290	11'1" x 17'4"
Kitchen/ Family Room	2800 x 5290	9'2" x 17'4"
Master Bedroom	3450 x 5290	11'3" x 17'4"
Bedroom 4	2800 x 3500	9'2" x 11'5"
Bedroom 2	3450 x 4770	11'3" x 15'8"
Bedroom 3	2800 x 4770	9'2" x 15'8"



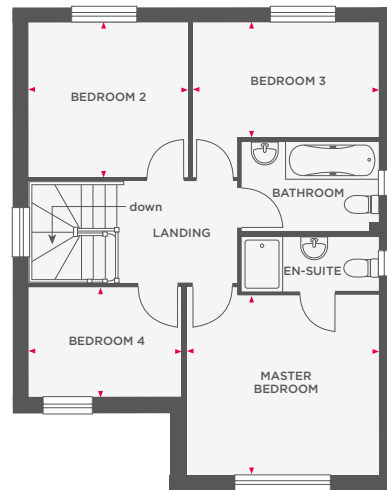
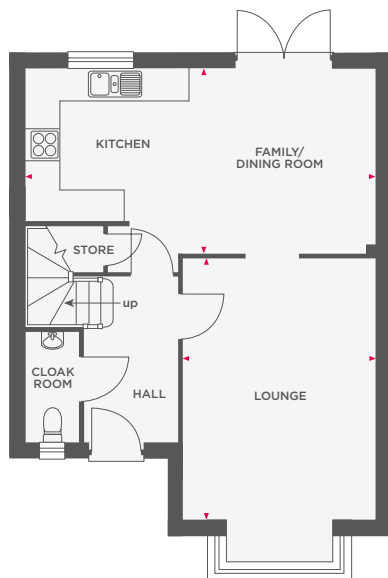
Wain Homes abides by the New Homes Quality Code, an independent industry code introduced to champion quality new homes and better consumer outcomes. Dimensions shown are internal finished dimensions which may vary as each home is built individually and the precise internal finishes may not always be the same. Please be aware that window and door positions could vary due to plot orientation. It is essential to view the working drawings with our Sales Executive for plot specific detail. Enquire for further information. Wain Homes Policy is continuous product and specification development. Every effort has been made to ensure the accuracy of the information provided in this leaflet at the date of publication but it may be subject to change without notice. Please consult with our Sales Executive to obtain the current specification. You should take appropriate steps to verify any information upon which you wish to rely. The sizes indicated are not intended to be used for carpet sizes, appliance spaces or items of furniture. Elevational treatments may vary to those shown. These particulars are intended for guidance only and their accuracy is not guaranteed. They do not constitute a contract, part of a contract or warranty. (October 2023)

Wain
HOMES



THE WREN

4 BEDROOM HOME WITH GARAGE



Lounge	5608 x 3552	18'5" x 11'8"
Kitchen/Family/Dining Room	6490 x 3412	21'4" x 11'2"

Master Bedroom	3498 x 3552	11'6" x 11'8"
Bedroom 2	2835 x 3000	9'4" x 9'10"
Bedroom 3	3398 x 2093	11'2" x 6'10"
Bedroom 4	2845 x 2035	9'4" x 6'8"



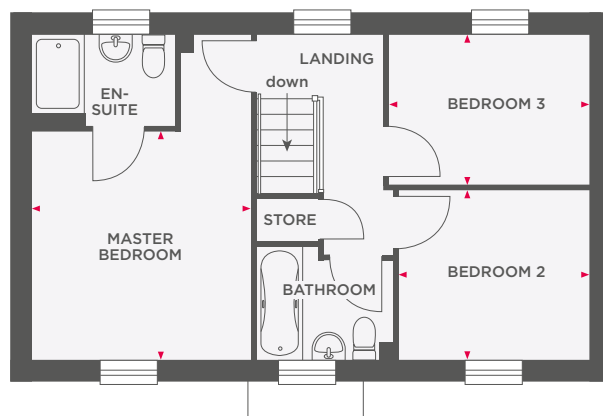
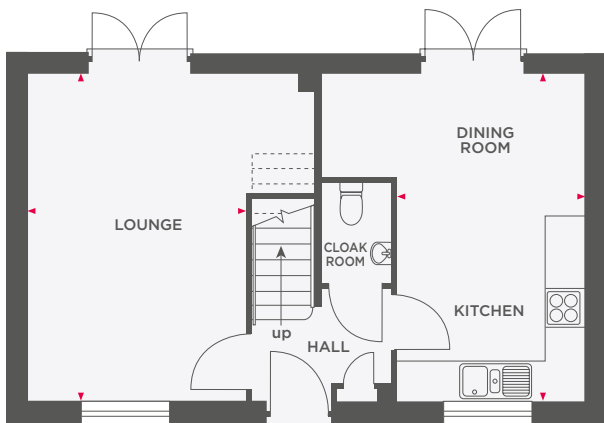
Wain Homes abides by the New Homes Quality Code, an independent industry code introduced to champion quality new homes and better consumer outcomes. Dimensions shown are internal finished dimensions which may vary as each home is built individually and the precise internal finishes may not always be the same. Please be aware that window and door positions could vary due to plot orientation. It is essential to view the working drawings with our Sales Executive for plot specific detail. Enquire for further information. Wain Homes Policy is continuous product and specification development. Every effort has been made to ensure the accuracy of the information provided in this leaflet at the date of publication but it may be subject to change without notice. Please consult with our Sales Executive to obtain the current specification. You should take appropriate steps to verify any information upon which you wish to rely. The sizes indicated are not intended to be used for carpet sizes, appliance spaces or items of furniture. Elevational treatments may vary to those shown. These particulars are intended for guidance only and their accuracy is not guaranteed. They do not constitute a contract, part of a contract or warranty. (October 2023)





THE BRANCASTER

3 BEDROOM HOME WITH PARKING



Lounge	3315 x 4960	10'10" x 16'3"
Kitchen/Dining Room	2835 x 4960	9'3" x 16'3"

Master Bedroom	3315 x 3485	10'10" x 11'5"
Bedroom 2	2875 x 2586	9'5" x 8'5"
Bedroom 3	3030 x 2285	9'11" x 7'5"



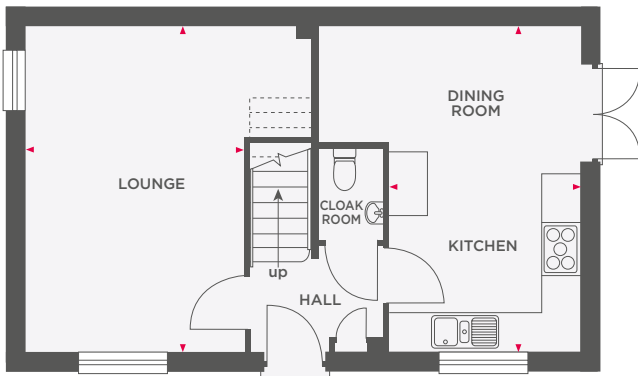
Wain Homes abides by the New Homes Quality Code, an independent industry code introduced to champion quality new homes and better consumer outcomes. Dimensions shown are internal finished dimensions which may vary as each home is built individually and the precise internal finishes may not always be the same. Please be aware that window and door positions could vary due to plot orientation. It is essential to view the working drawings with our Sales Executive for plot specific detail. Enquire for further information. Wain Homes Policy is continuous product and specification development. Every effort has been made to ensure the accuracy of the information provided in this leaflet at the date of publication but it may be subject to change without notice. Please consult with our Sales Executive to obtain the current specification. You should take appropriate steps to verify any information upon which you wish to rely. The sizes indicated are not intended to be used for carpet sizes, appliance spaces or items of furniture. Elevational treatments may vary to those shown. These particulars are intended for guidance only and their accuracy is not guaranteed. They do not constitute a contract, part of a contract or warranty. (October 2023)





THE BRUNSWICK

3 BEDROOM HOME WITH PARKING



Lounge	3315 x 4960	10'10" x 16'3"
Kitchen/ Dining Room	2835 x 4960	9'3" x 16'3"

Master Bedroom	3315 x 3485	10'10" x 11'5"
Bedroom 2	2875 x 2586	9'5" x 8'5"
Bedroom 3	3030 x 2285	9'11" x 7'5"



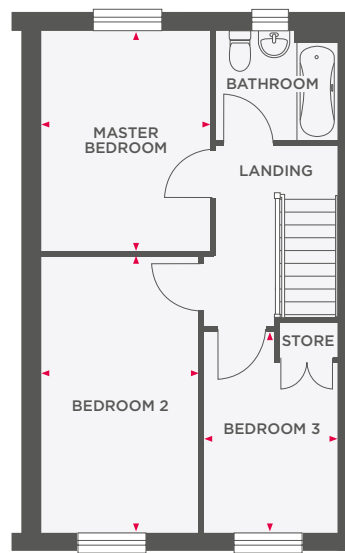
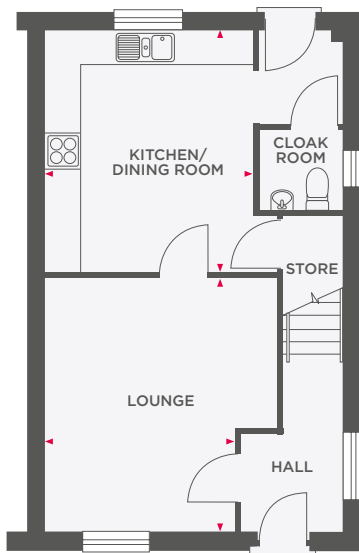
Wain Homes abides by the New Homes Quality Code, an independent industry code introduced to champion quality new homes and better consumer outcomes. Dimensions shown are internal finished dimensions which may vary as each home is built individually and the precise internal finishes may not always be the same. Please be aware that window and door positions could vary due to plot orientation. It is essential to view the working drawings with our Sales Executive for plot specific detail. Enquire for further information. Wain Homes Policy is continuous product and specification development. Every effort has been made to ensure the accuracy of the information provided in this leaflet at the date of publication but it may be subject to change without notice. Please consult with our Sales Executive to obtain the current specification. You should take appropriate steps to verify any information upon which you wish to rely. The sizes indicated are not intended to be used for carpet sizes, appliance spaces or items of furniture. Elevational treatments may vary to those shown. These particulars are intended for guidance only and their accuracy is not guaranteed. They do not constitute a contract, part of a contract or warranty. (October 2023)





THE CARNGLAZE

3 BEDROOM HOME WITH PARKING



Lounge	4073 (max) x 4477	13'4" (max) x 14'8"
Kitchen/Dining Room	3646 x 4255	12'0" x 14'0"

Master Bedroom	2970 x 3873	9'9" x 12'8"
Bedroom 2	2770 x 4859	9'1" x 15'11"
Bedroom 3	2336 x 3535	7'8" x 11'7"



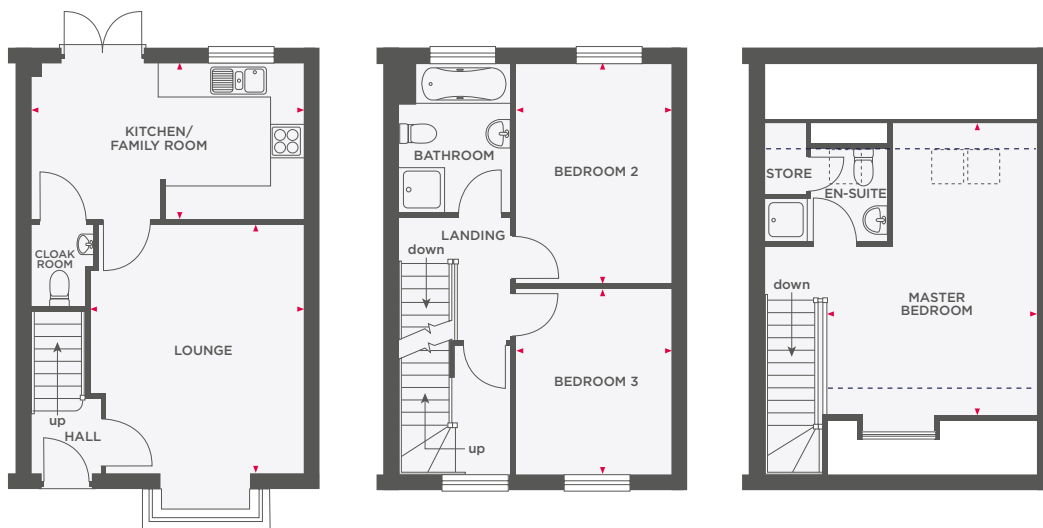
Wain Homes abides by the New Homes Quality Code, an independent industry code introduced to champion quality new homes and better consumer outcomes. Dimensions shown are internal finished dimensions which may vary as each home is built individually and the precise internal finishes may not always be the same. Please be aware that window and door positions could vary due to plot orientation. It is essential to view the working drawings with our Sales Executive for plot specific detail. Enquire for further information. Wain Homes Policy is continuous product and specification development. Every effort has been made to ensure the accuracy of the information provided in this leaflet at the date of publication but it may be subject to change without notice. Please consult with our Sales Executive to obtain the current specification. You should take appropriate steps to verify any information upon which you wish to rely. The sizes indicated are not intended to be used for carpet sizes, appliance spaces or items of furniture. Elevational treatments may vary to those shown. These particulars are intended for guidance only and their accuracy is not guaranteed. They do not constitute a contract, part of a contract or warranty. (October 2023)





THE HANBURY

3 BEDROOM HOME WITH PARKING



Limited Use Area

Reduced head height below 1.5m

Lounge	3865 x 5174	12'8" x 17'0"
Kitchen/Family Room	4900 x 2798	16'1" x 9'2"

Bedroom 2	2820 x 3956	9'3" x 13'0"
Bedroom 3	2820 x 3351	9'3" x 11'0"

Master Bedroom	5320 x 3900	17'5" x 12'10"
----------------	-------------	----------------



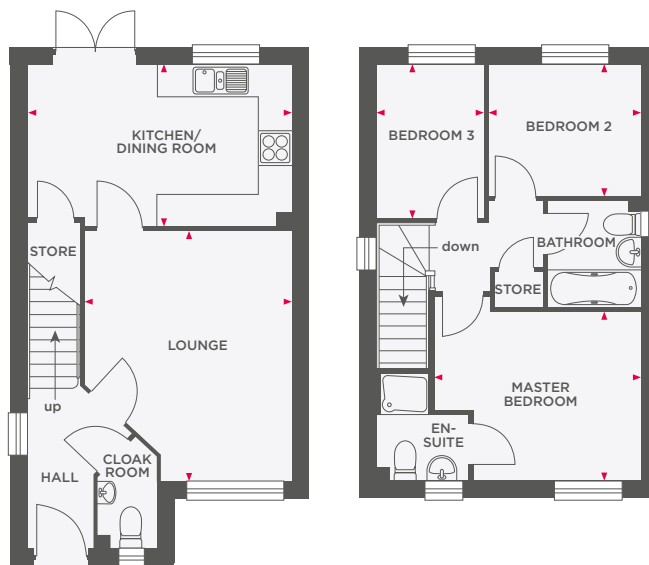
Wain Homes abides by the New Homes Quality Code, an independent industry code introduced to champion quality new homes and better consumer outcomes. Dimensions shown are internal finished dimensions which may vary as each home is built individually and the precise internal finishes may not always be the same. Please be aware that window and door positions could vary due to plot orientation. It is essential to view the working drawings with our Sales Executive for plot specific detail. Enquire for further information. Wain Homes Policy is continuous product and specification development. Every effort has been made to ensure the accuracy of the information provided in this leaflet at the date of publication but it may be subject to change without notice. Please consult with our Sales Executive to obtain the current specification. You should take appropriate steps to verify any information upon which you wish to rely. The sizes indicated are not intended to be used for carpet sizes, appliance spaces or items of furniture. Elevational treatments may vary to those shown. These particulars are intended for guidance only and their accuracy is not guaranteed. They do not constitute a contract, part of a contract or warranty. (October 2023)





THE TREVITHICK

3 BEDROOM HOME WITH PARKING



Lounge	3800 x 4605	12'5" x 15'1"
Kitchen/Dining Room	4845 x 2965	15'10" x 9'8"

Master Bedroom	3910 x 3100	12'10" x 10'2"
Bedroom 2	2795 x 2430	7'9" x 7'10"
Bedroom 3	1960 x 2820	6'5" x 9'3"



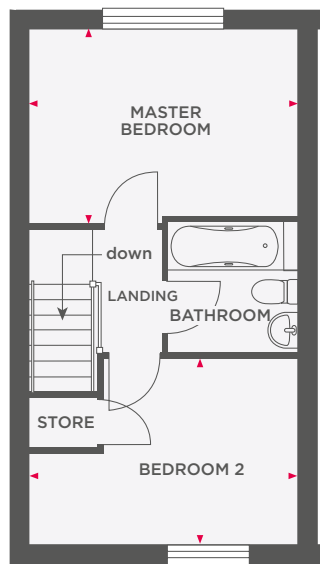
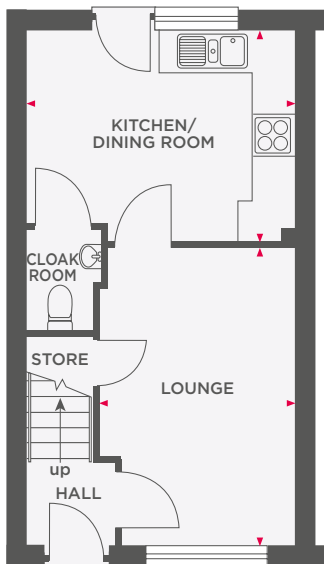
Wain Homes abides by the New Homes Quality Code, an independent industry code introduced to champion quality new homes and better consumer outcomes. Dimensions shown are internal finished dimensions which may vary as each home is built individually and the precise internal finishes may not always be the same. Please be aware that window and door positions could vary due to plot orientation. It is essential to view the working drawings with our Sales Executive for plot specific detail. Enquire for further information. Wain Homes Policy is continuous product and specification development. Every effort has been made to ensure the accuracy of the information provided in this leaflet at the date of publication but it may be subject to change without notice. Please consult with our Sales Executive to obtain the current specification. You should take appropriate steps to verify any information upon which you wish to rely. The sizes indicated are not intended to be used for carpet sizes, appliance spaces or items of furniture. Elevational treatments may vary to those shown. These particulars are intended for guidance only and their accuracy is not guaranteed. They do not constitute a contract, part of a contract or warranty. (October 2023)





THE BELL

2 BEDROOM HOME WITH PARKING



Lounge	2822 x 4297	9'3" x 14'1"
Kitchen/Dining Room	3850 x 3060	12'8" x 10'0"

Master Bedroom	3860 x 2797	12'8" x 9'2"
Bedroom 2	3860 x 2684	12'8" x 8'10"



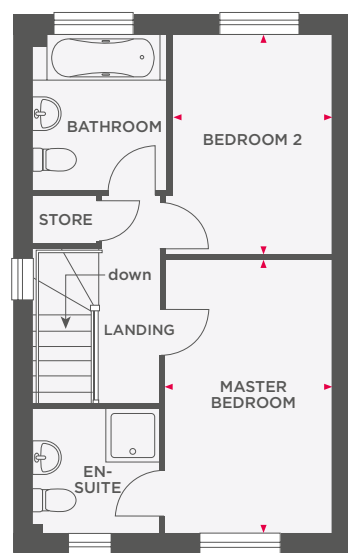
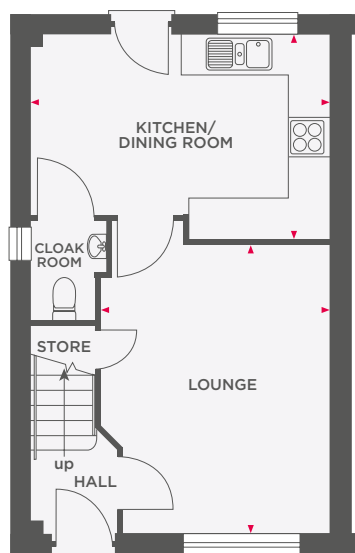
Wain Homes abides by the New Homes Quality Code, an independent industry code introduced to champion quality new homes and better consumer outcomes. Dimensions shown are internal finished dimensions which may vary as each home is built individually and the precise internal finishes may not always be the same. Please be aware that window and door positions could vary due to plot orientation. It is essential to view the working drawings with our Sales Executive for plot specific detail. Enquire for further information. Wain Homes Policy is continuous product and specification development. Every effort has been made to ensure the accuracy of the information provided in this leaflet at the date of publication but it may be subject to change without notice. Please consult with our Sales Executive to obtain the current specification. You should take appropriate steps to verify any information upon which you wish to rely. The sizes indicated are not intended to be used for carpet sizes, appliance spaces or items of furniture. Elevational treatments may vary to those shown. These particulars are intended for guidance only and their accuracy is not guaranteed. They do not constitute a contract, part of a contract or warranty. (October 2023)





THE CHURCHILL

2 BEDROOM HOME WITH PARKING



Lounge	3422 x 4285	11'3" x 14'1"
Kitchen/Dining Room	4450 x 3073	14'7" x 10'1"

Master Bedroom	2485 x 4072	8'2" x 13'4"
Bedroom 2	2375 x 3285	7'9" x 10'9"



Wain Homes abides by the New Homes Quality Code, an independent industry code introduced to champion quality new homes and better consumer outcomes. Dimensions shown are internal finished dimensions which may vary as each home is built individually and the precise internal finishes may not always be the same. Please be aware that window and door positions could vary due to plot orientation. It is essential to view the working drawings with our Sales Executive for plot specific detail. Enquire for further information. Wain Homes Policy is continuous product and specification development. Every effort has been made to ensure the accuracy of the information provided in this leaflet at the date of publication but it may be subject to change without notice. Please consult with our Sales Executive to obtain the current specification. You should take appropriate steps to verify any information upon which you wish to rely. The sizes indicated are not intended to be used for carpet sizes, appliance spaces or items of furniture. Elevational treatments may vary to those shown. These particulars are intended for guidance only and their accuracy is not guaranteed. They do not constitute a contract, part of a contract or warranty. (October 2023)

