


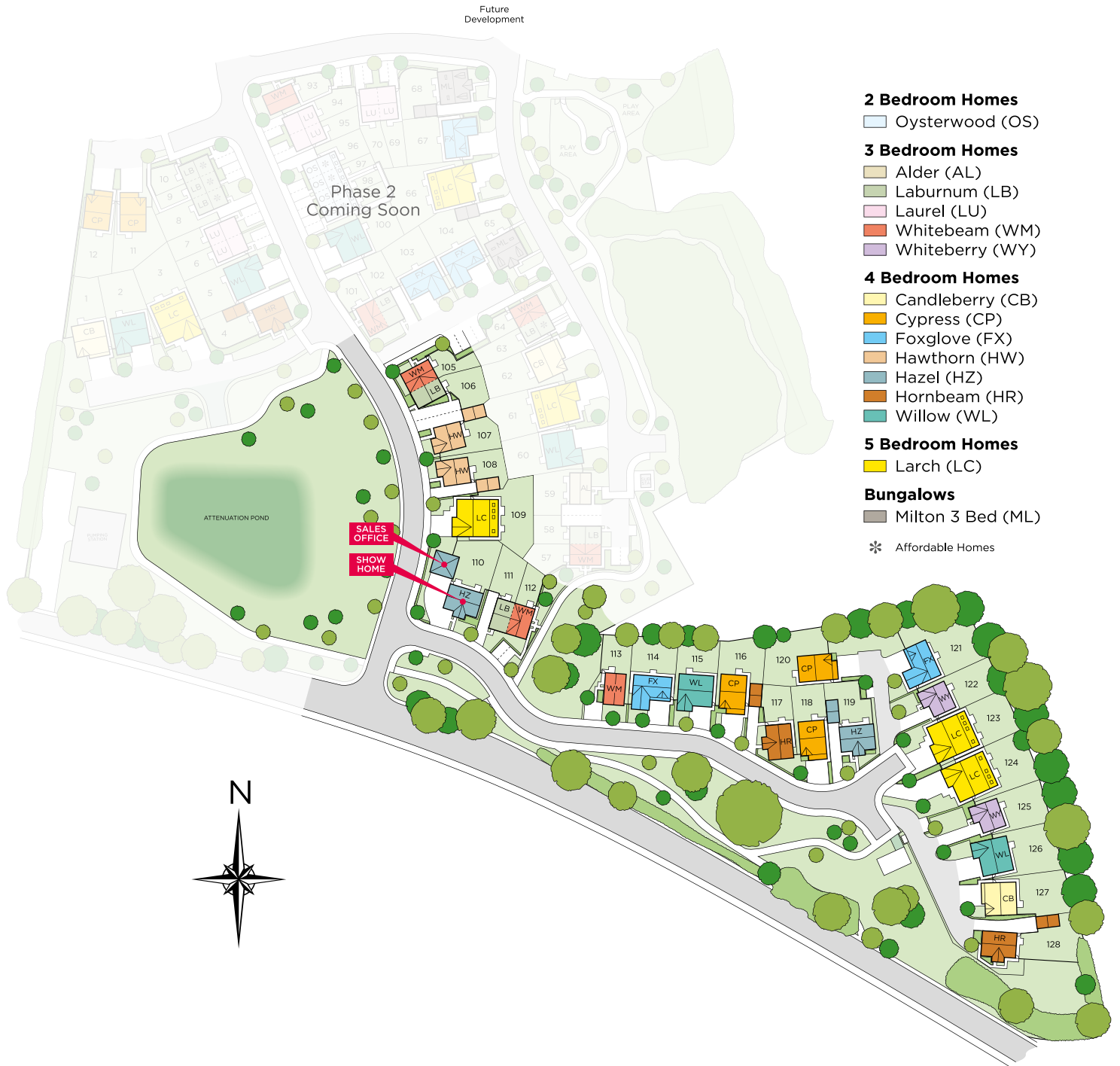
Wain
HOMES

A woman with long brown hair, wearing a white lace-trimmed blouse, is laughing joyfully in a kitchen. She is holding a small glass and pouring something into a red bell pepper. On the counter in front of her are several yellow and red bell peppers on a wooden cutting board. In the background, a man with grey hair, wearing a blue polo shirt, is smiling and looking towards her. The kitchen features light wood cabinets, a stainless steel range hood with the AEG logo, and a built-in oven. A glass of white wine sits on the counter to the right, along with a plate of food and a bowl of tomatoes.

A place that lets you be you.
That says everything about you.
That feels good, feels right.
Where life can be beautifully imperfect.
And you love every moment of it.

YOUR KIND OF *perfect*

SHROPSHIRE HEIGHTS DEVELOPMENT PLAN



Wain Homes Policy is continuous product and specification development. Plans and images are shown for illustrative purposes only and the final layout and development may vary from that shown. Every effort has been made to ensure the accuracy of the information provided in this leaflet at the date of publication but it may be subject to change without notice. Please consult with our Sales Executive to obtain the current specification. You should take appropriate steps to verify any information upon which you wish to rely. These particulars are intended for guidance only and their accuracy is not guaranteed. They do not constitute a contract, part of a contract or warranty. (March 2023)

SHROPSHIRE HEIGHTS SPECIFICATION

LABURNUM | WHITEBEAM | WHITEBERRY

FOR PLOTS 110-128 ONLY

KITCHENS

- Luxury Fitted Kitchen from our Standard Range with Soft Close Mechanisms in a Choice of Finishes*
- Choice of Laminate Worktops to Kitchen with Matching Upstands
- Stainless Steel Zanussi Single Electric Oven, Zanussi 4 Ring Gas Hob with Glass Splashback and Extractor Hood
- 1 ½ Bowl Inset Stainless Steel Sink to the Kitchen
- White Sockets and Switches to Kitchen and Adjoining Open Plan Areas

BATHROOMS

- Roca Sanitaryware in White
- Aqualisa Brassware
- Aqualisa Thermostatic Shower and Screen to be Fitted over the Bath with Additional Tiling
- Aqualisa Thermostatic Shower in En-Suites
- Bathroom and En-suites to be Half Tiled with a Choice of Porcelanosa Wall Tiles
- Shower Enclosures to be Fully Tiled with a Choice of Porcelanosa Wall Tiles
- Stainless Steel Heated Towel Rails to Bathroom and En-Suites
- Shaver Sockets to all Bathrooms and En-Suites

BEDROOMS

- Television Aerial Point to Master Bedroom
- Telephone Point to Master Bedroom
- USB Socket to all Bedrooms

HEATING SYSTEM

- Gas Central Heating with High Efficiency Boiler and Panel Radiators
- Honeywell T6 Thermostat

OTHER INTERNAL FEATURES

- All Ceilings to be Skim Finished and Painted White
- All Walls to be Skim Finished and Painted Soft Cream
- All Woodwork to be Finished In White Gloss
- Staircase, including Newel Posts and Spindles, to be Finished in White Gloss
- All Handrails and Newel Caps to be Finished in White Gloss
- Vertical 5 Panel Internal Doors to be Finished in White Gloss with Chrome Effect Door Furniture
- Ultrafast Hard Wired Fibre Broadband[^]
- White Sockets and Switches Throughout
- Television Aerial Point to Lounge
- Telephone Point to Lounge
- USB Socket to Lounge and Kitchen
- Hard Wired Smoke Detectors with Battery Backup

EXTERNAL FEATURES

- White PVCu Windows and White Side/Rear/Bi-Fold Doors
- Black Composite Front External Door
- Black Rainwater Goods
- Black Glazed Garage Doors to all Integral and Detached Garages
- External Lights to Front and Rear
- 32 AMP / 7.3kW Car Charging Point
- Hard Wired Doorbell
- Power and Lighting to all Garages
- External Tap
- Gardens Landscaped to Front
- Gardens to Rear Rotavated
- Buff Riven Paving to all Patio Areas
- 1.8m Close Boarded Divisional Fencing to Rear Garden (where applicable)

WARRANTIES

- 10 Year NHBC Buildmark Warranty
- 2 Year Wain Homes Warranty

* Upgraded kitchen choices available. [^]Ultrafast Fibre is the latest in broadband technology that sees your broadband speeds faster than ever before – the next generation of internet, as fibre optic technology evolves, you'll already have everything you need in your property to get the benefits. Please note these services may be not fully active at completion stage until the relevant works have been completed by the service provider. The buyer is responsible for ordering their own phoneline and internet connection.

Wain Homes Policy is continuous product and specification development. Images shown are for illustrative purposes only. Every effort has been made to ensure the accuracy of the information provided in this leaflet at the date of publication but it may be subject to change without notice. Specification choices are subject to build stage. Please consult with our Sales Executive to obtain the current specification or the specification of any particular plot. You should take appropriate steps to verify any information upon which you wish to rely. These particulars are intended for guidance only and their accuracy is not guaranteed. They do not constitute a contract, part of a contract or warranty. (January 2024)

Wain
HOMES

SHROPSHIRE HEIGHTS SPECIFICATION

CANDLEBERRY | CYPRESS | FOXGLOVE | HAZEL
HORNBEAM | LARCH | WILLOW

FOR PLOTS 110-128 ONLY

KITCHENS

- Luxury Fitted Kitchen from our Standard Range with Soft Close Mechanisms in a Choice of Finishes*
- Choice of Laminate Worktops to Kitchen with Matching Upstands
- Stainless Steel Zanussi Double Electric Oven, Zanussi 5 Ring Gas Hob with Glass Splashback and Extractor Hood
- Integrated Zanussi Fridge Freezer
- 1 ½ Bowl Inset Stainless Steel Sink to the Kitchen
- Single Bowl Inset Stainless Steel Sink to the Utility (excluding Foxglove)
- White Sockets and Switches to Kitchen and Adjoining Open Plan Areas
- Chrome Downlights to Kitchen (not to Adjoining Open Plan Areas)

BATHROOMS

- Roca Sanitaryware in White
- Aqualisa Brassware
- Aqualisa Electric Shower in separate Shower Cubicle in Bathrooms
- Aqualisa Thermostatic Shower in En-Suites
- Bathroom and En-suite to be Half Tiled with a Choice of Porcelanosa Wall Tiles
- Shower Enclosures to be Fully Tiled with a Choice of Porcelanosa Wall Tiles
- Stainless Steel Heated Towel Rails to Bathroom and En-Suites
- Chrome Downlights to Bathrooms & En-Suites
- Shaver Sockets to all Bathrooms and En-Suites

BEDROOMS

- Television Aerial Point to Master Bedroom
- Telephone Point to Master Bedroom
- USB Socket to all Bedrooms
- Wardrobes to Master Bedroom from our Standard Range (excluding Mirrors)**

HEATING SYSTEM

- Gas Central Heating with High Efficiency Boiler and Panel Radiators
- Honeywell T6 Thermostat

OTHER INTERNAL FEATURES

- All Ceilings to be Skim Finished and Painted White
- All Walls to be Skim Finished and Painted Soft Cream
- All Woodwork to be Finished In White Gloss
- Staircase, including Newel Posts and Spindles, to be Finished in White Gloss
- All Handrails and Newel Caps to be Finished in White Gloss
- Vertical 5 Panel Internal Doors to be Finished in White Gloss with Chrome Effect Door Furniture
- Ultrafast Hard Wired Fibre Broadband[^]
- White Sockets and Switches Throughout
- Television Aerial Point to Lounge
- Telephone Point to Lounge and Study
- USB Socket to Lounge, Kitchen and Study
- Hard Wired Smoke Detectors with Battery Backup

EXTERNAL FEATURES

- White PVCu Windows and White Side/Rear/Bi-Fold Doors
- Black Composite Front External Door
- Black Rainwater Goods
- Black Glazed Garage Doors to all Integral and Detached Garages
- External Lights to Front and Rear
- 32 AMP / 7.3kW Car Charging Point
- Hard Wired Doorbell
- Power and Lighting to all Garages
- External Tap
- Gardens Landscaped to Front
- Gardens to Rear Rotavated
- Buff Riven Paving to all Patio Areas
- 1.8m Close Boarded Divisional Fencing to Rear Garden (where applicable)

WARRANTIES

- 10 Year NHBC Buildmark Warranty
- 2 Year Wain Homes Warranty

* Upgraded kitchen choices available ** Upgraded mirror/door options available [^]Ultrafast Fibre is the latest in broadband technology that sees your broadband speeds faster than ever before – the next generation of internet, as fibre optic technology evolves, you'll already have everything you need in your property to get the benefits. Please note these services may be not fully active at completion stage until the relevant works have been completed by the service provider. The buyer is responsible for ordering their own phoneline and internet connection.

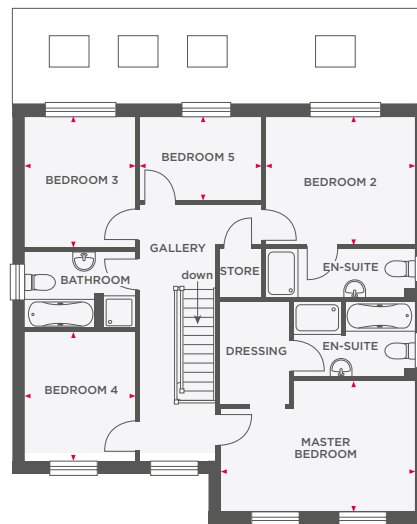
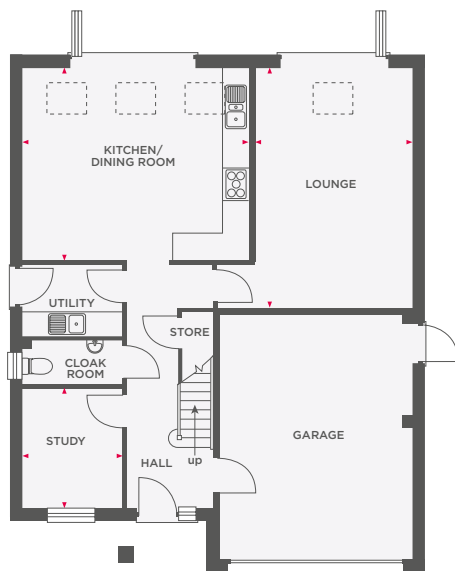
Wain Homes Policy is continuous product and specification development. Images shown are for illustrative purposes only. Every effort has been made to ensure the accuracy of the information provided in this leaflet at the date of publication but it may be subject to change without notice. Specification choices are subject to build stage. Please consult with our Sales Executive to obtain the current specification or the specification of any particular plot. You should take appropriate steps to verify any information upon which you wish to rely. These particulars are intended for guidance only and their accuracy is not guaranteed. They do not constitute a contract, part of a contract or warranty. (January 2024)

Wain
HOMES



THE LARCH

5 BEDROOM DETACHED HOME WITH DOUBLE GARAGE



| | | |
|---------------------|-------------|---------------|
| Lounge | 3850 x 5885 | 12'7" x 19'3" |
| Kitchen/Dining Room | 5573 x 4735 | 18'3" x 15'6" |
| Study | 2450 x 2942 | 8'0" x 9'7" |

| | | |
|----------------|-------------|---------------|
| Master Bedroom | 4735 x 3201 | 15'6" x 10'6" |
| Bedroom 2 | 3663 x 3146 | 12'0" x 10'3" |
| Bedroom 3 | 2713 x 3219 | 8'10" x 10'6" |
| Bedroom 4 | 2713 x 3178 | 8'10" x 10'5" |
| Bedroom 5 | 2997 x 2063 | 9'10" x 6'9" |



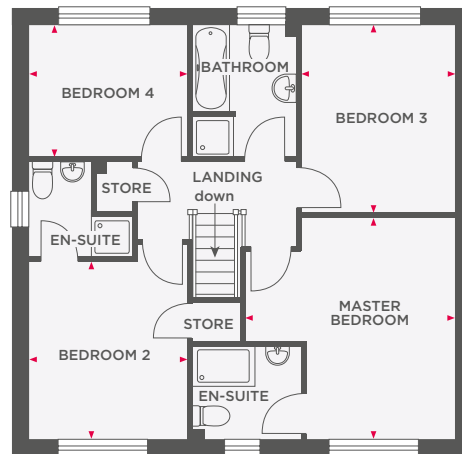
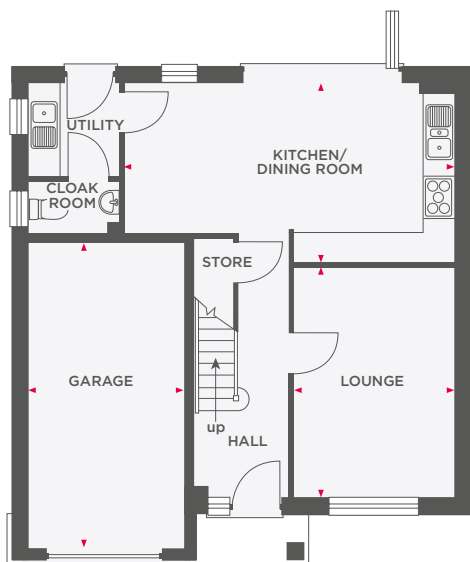
Wain Homes abides by the New Homes Quality Code, an independent industry code introduced to champion quality new homes and better consumer outcomes. Dimensions shown are internal finished dimensions which may vary as each home is built individually and the precise internal finishes may not always be the same. Please be aware that window and door positions could vary due to plot orientation. It is essential to view the working drawings with our Sales Executive for plot specific detail. Enquire for further information. Wain Homes Policy is continuous product and specification development. Every effort has been made to ensure the accuracy of the information provided in this leaflet at the date of publication but it may be subject to change without notice. Please consult with our Sales Executive to obtain the current specification. You should take appropriate steps to verify any information upon which you wish to rely. The sizes indicated are not intended to be used for carpet sizes, appliance spaces or items of furniture. Elevational treatments may vary to those shown. These particulars are intended for guidance only and their accuracy is not guaranteed. They do not constitute a contract, part of a contract or warranty. (September 2023)





THE CANDLEBERRY

4 BEDROOM DETACHED HOME WITH GARAGE



| | | |
|---------------------|-------------|---------------|
| Lounge | 3163 x 4493 | 10'4" x 14'8" |
| Kitchen/Dining Room | 6485 x 3530 | 21'3" x 11'7" |
| Garage | 3097 x 6162 | 10'1" x 20'2" |

| | | |
|----------------|-------------|---------------|
| Master Bedroom | 4097 x 4328 | 13'5" x 14'2" |
| Bedroom 2 | 3107 x 3485 | 10'2" x 11'5" |
| Bedroom 3 | 3001 x 3670 | 9'10" x 12'0" |
| Bedroom 4 | 3100 x 2564 | 10'2" x 8'4" |



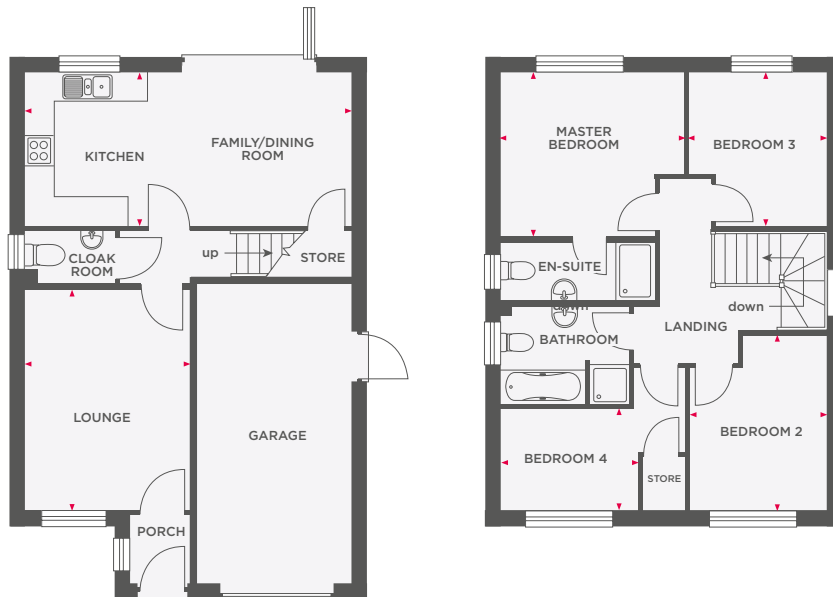
Wain Homes abides by the New Homes Quality Code, an independent industry code introduced to champion quality new homes and better consumer outcomes. Dimensions shown are internal finished dimensions which may vary as each home is built individually and the precise internal finishes may not always be the same. Please be aware that window and door positions could vary due to plot orientation. It is essential to view the working drawings with our Sales Executive for plot specific detail. Enquire for further information. Wain Homes Policy is continuous product and specification development. Every effort has been made to ensure the accuracy of the information provided in this leaflet at the date of publication but it may be subject to change without notice. Please consult with our Sales Executive to obtain the current specification. You should take appropriate steps to verify any information upon which you wish to rely. The sizes indicated are not intended to be used for carpet sizes, appliance spaces or items of furniture. Elevational treatments may vary to those shown. These particulars are intended for guidance only and their accuracy is not guaranteed. They do not constitute a contract, part of a contract or warranty. (September 2023)





THE CYPRESS

4 BEDROOM DETACHED HOME WITH INTEGRAL GARAGE



| | | |
|---------------------|-------------|---------------|
| Lounge | 3300 x 4463 | 10'9" x 14'7" |
| Kitchen/Dining Room | 6535 x 3085 | 21'5" x 10'1" |

| | | |
|----------------|-------------|---------------|
| Master Bedroom | 3688 x 3284 | 12'1" x 10'9" |
| Bedroom 2 | 2763 x 3549 | 9'0" x 11'7" |
| Bedroom 3 | 2760 x 3061 | 9'0" x 10'0" |
| Bedroom 4 | 2763 x 2063 | 9'0" x 6'9" |



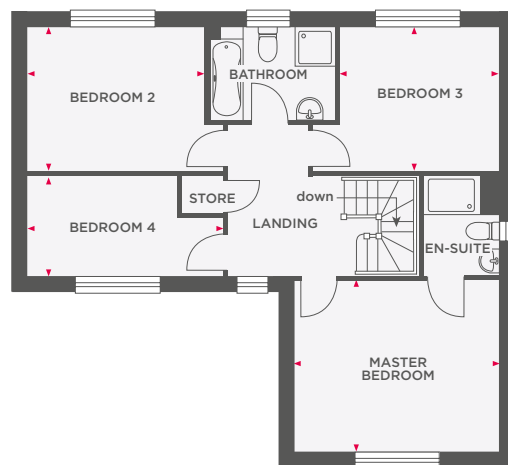
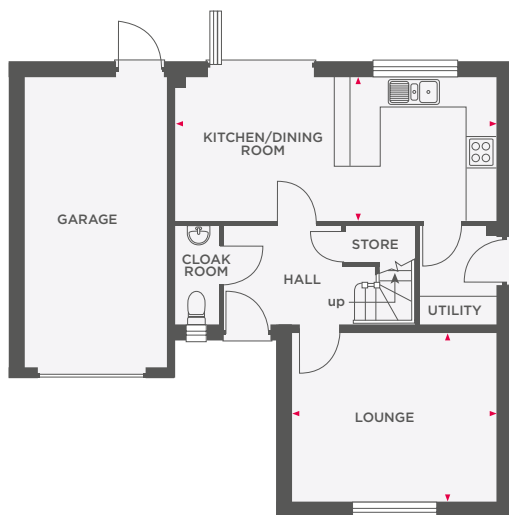
Wain Homes abides by the New Homes Quality Code, an independent industry code introduced to champion quality new homes and better consumer outcomes. Dimensions shown are internal finished dimensions which may vary as each home is built individually and the precise internal finishes may not always be the same. Please be aware that window and door positions could vary due to plot orientation. It is essential to view the working drawings with our Sales Executive for plot specific detail. Enquire for further information. Wain Homes Policy is continuous product and specification development. Every effort has been made to ensure the accuracy of the information provided in this leaflet at the date of publication but it may be subject to change without notice. Please consult with our Sales Executive to obtain the current specification. You should take appropriate steps to verify any information upon which you wish to rely. The sizes indicated are not intended to be used for carpet sizes, appliance spaces or items of furniture. Elevational treatments may vary to those shown. These particulars are intended for guidance only and their accuracy is not guaranteed. They do not constitute a contract, part of a contract or warranty. (September 2023)





THE FOXGLOVE

4 BEDROOM DETACHED HOME WITH INTEGRAL GARAGE



| | | |
|---------------------|-------------|----------------|
| Lounge | 4285 x 3563 | 14'10" x 11'8" |
| Kitchen/Dining Room | 6735 x 3010 | 22'1" x 9'10" |

| | | |
|----------------|-------------|----------------|
| Master Bedroom | 4285 x 3625 | 14'0" x 11'10" |
| Bedroom 2 | 3738 x 3010 | 12'3" x 9'10" |
| Bedroom 3 | 3352 x 2985 | 10'11" x 9'9" |
| Bedroom 4 | 4138 x 2088 | 13'6" x 6'10" |



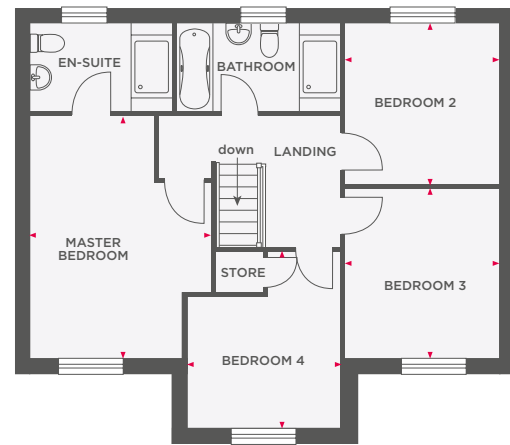
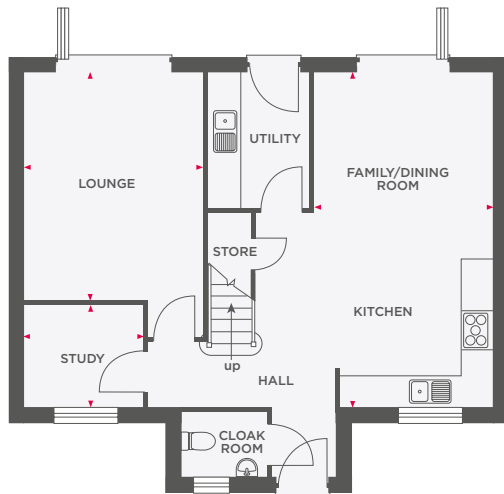
Wain Homes abides by the New Homes Quality Code, an independent industry code introduced to champion quality new homes and better consumer outcomes. Dimensions shown are internal finished dimensions which may vary as each home is built individually and the precise internal finishes may not always be the same. Please be aware that window and door positions could vary due to plot orientation. It is essential to view the working drawings with our Sales Executive for plot specific detail. Enquire for further information. Wain Homes Policy is continuous product and specification development. Every effort has been made to ensure the accuracy of the information provided in this leaflet at the date of publication but it may be subject to change without notice. Please consult with our Sales Executive to obtain the current specification. You should take appropriate steps to verify any information upon which you wish to rely. The sizes indicated are not intended to be used for carpet sizes, appliance spaces or items of furniture. Elevational treatments may vary to those shown. These particulars are intended for guidance only and their accuracy is not guaranteed. They do not constitute a contract, part of a contract or warranty. (September 2023)





THE HAZEL

4 BEDROOM DETACHED HOME WITH DETACHED GARAGE



| | | |
|---------------------|-------------|---------------|
| Lounge | 3400 x 4363 | 11'1" x 14'3" |
| Kitchen/Dining Room | 3405 x 6423 | 11'2" x 21'0" |
| Study | 2255 x 1973 | 7'4" x 6'5" |

| | | |
|----------------|-------------|---------------|
| Master Bedroom | 3462 x 4584 | 11'4" x 15'0" |
| Bedroom 2 | 2925 x 3122 | 9'7" x 10'2" |
| Bedroom 3 | 2949 x 3212 | 9'8" x 10'6" |
| Bedroom 4 | 2935 x 3320 | 9'7" x 10'10" |



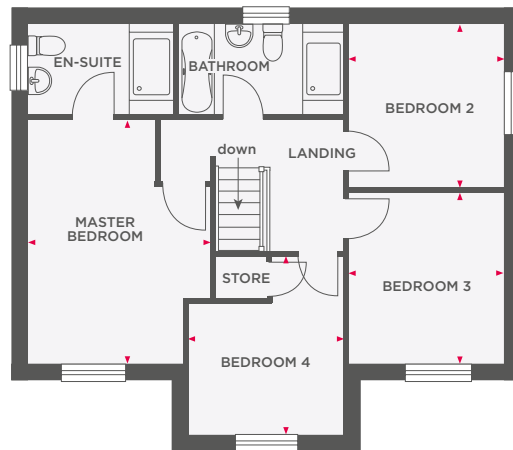
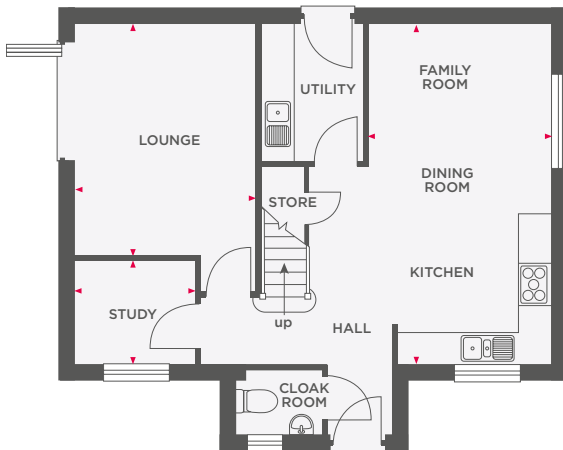
Wain Homes abides by the New Homes Quality Code, an independent industry code introduced to champion quality new homes and better consumer outcomes. Dimensions shown are internal finished dimensions which may vary as each home is built individually and the precise internal finishes may not always be the same. Please be aware that window and door positions could vary due to plot orientation. It is essential to view the working drawings with our Sales Executive for plot specific detail. Enquire for further information. Wain Homes Policy is continuous product and specification development. Every effort has been made to ensure the accuracy of the information provided in this leaflet at the date of publication but it may be subject to change without notice. Please consult with our Sales Executive to obtain the current specification. You should take appropriate steps to verify any information upon which you wish to rely. The sizes indicated are not intended to be used for carpet sizes, appliance spaces or items of furniture. Elevational treatments may vary to those shown. These particulars are intended for guidance only and their accuracy is not guaranteed. They do not constitute a contract, part of a contract or warranty. (September 2023)





THE HORNBEAM

4 BEDROOM DETACHED HOME WITH STUDY



| | | |
|---------------------|-------------|---------------|
| Lounge | 3400 x 4363 | 11'1" x 14'3" |
| Kitchen/Dining Room | 3405 x 6423 | 11'2" x 21'0" |
| Study | 2255 x 1973 | 7'4" x 6'5" |

| | | |
|----------------|-------------|---------------|
| Master Bedroom | 3462 x 4584 | 11'4" x 15'0" |
| Bedroom 2 | 2925 x 3122 | 9'7" x 10'2" |
| Bedroom 3 | 2949 x 3212 | 9'8" x 10'6" |
| Bedroom 4 | 2935 x 3320 | 9'7" x 10'10" |



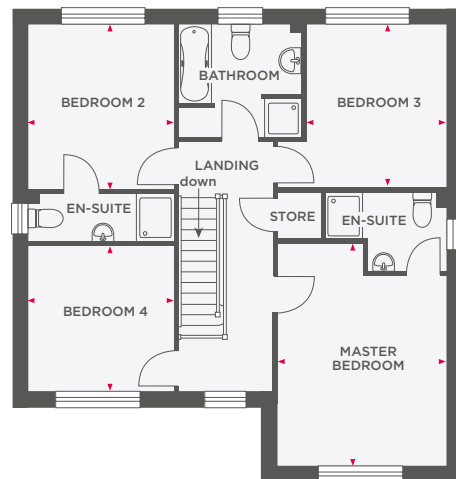
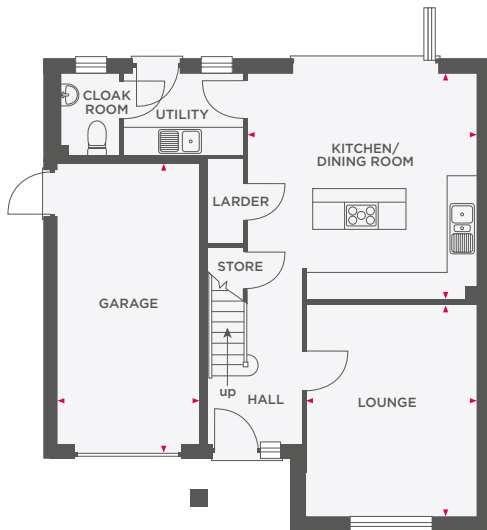
Wain Homes abides by the New Homes Quality Code, an independent industry code introduced to champion quality new homes and better consumer outcomes. Dimensions shown are internal finished dimensions which may vary as each home is built individually and the precise internal finishes may not always be the same. Please be aware that window and door positions could vary due to plot orientation. It is essential to view the working drawings with our Sales Executive for plot specific detail. Enquire for further information. Wain Homes Policy is continuous product and specification development. Every effort has been made to ensure the accuracy of the information provided in this leaflet at the date of publication but it may be subject to change without notice. Please consult with our Sales Executive to obtain the current specification. You should take appropriate steps to verify any information upon which you wish to rely. The sizes indicated are not intended to be used for carpet sizes, appliance spaces or items of furniture. Elevational treatments may vary to those shown. These particulars are intended for guidance only and their accuracy is not guaranteed. They do not constitute a contract, part of a contract or warranty. (September 2023)





THE WILLOW

4 BEDROOM DETACHED HOME WITH GARAGE



| | | |
|---------------------|-------------|-----------------|
| Lounge | 3610 x 4539 | 11'10" x 14'10" |
| Kitchen/Dining Room | 4873 x 4810 | 15'11" x 15'9" |
| Garage | 3051 x 6245 | 10'0" x 20'5" |

| | | |
|----------------|-------------|----------------|
| Master Bedroom | 3610 x 4744 | 11'10" x 15'6" |
| Bedroom 2 | 3087 x 3567 | 10'1" x 11'8" |
| Bedroom 3 | 2987 x 3515 | 9'9" x 11'6" |
| Bedroom 4 | 3087 x 3118 | 10'1" x 10'2" |



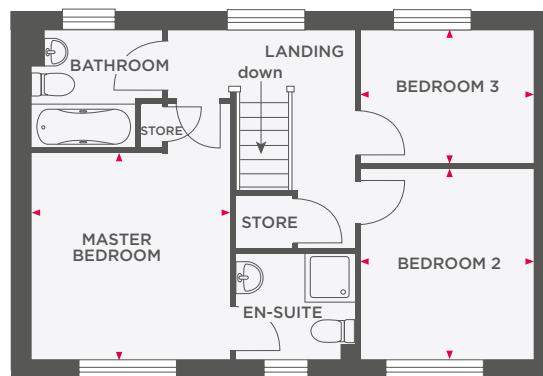
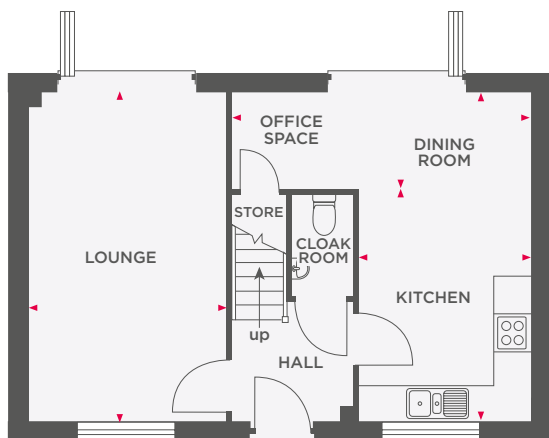
Wain Homes abides by the New Homes Quality Code, an independent industry code introduced to champion quality new homes and better consumer outcomes. Dimensions shown are internal finished dimensions which may vary as each home is built individually and the precise internal finishes may not always be the same. Please be aware that window and door positions could vary due to plot orientation. It is essential to view the working drawings with our Sales Executive for plot specific detail. Enquire for further information. Wain Homes Policy is continuous product and specification development. Every effort has been made to ensure the accuracy of the information provided in this leaflet at the date of publication but it may be subject to change without notice. Please consult with our Sales Executive to obtain the current specification. You should take appropriate steps to verify any information upon which you wish to rely. The sizes indicated are not intended to be used for carpet sizes, appliance spaces or items of furniture. Elevational treatments may vary to those shown. These particulars are intended for guidance only and their accuracy is not guaranteed. They do not constitute a contract, part of a contract or warranty. (September 2023)





THE ALDER

3 BEDROOM DETACHED HOME



| | | |
|---------------------|-------------|---------------|
| Lounge | 3213 x 5298 | 10'6" x 17'4" |
| Kitchen | 2750 x 3759 | 9'0" x 12'4" |
| Dining/Office Space | 4810 x 1539 | 15'9" x 5'0" |

| | | |
|----------------|-------------|----------------|
| Master Bedroom | 3213 x 3327 | 10'6" x 10'11" |
| Bedroom 2 | 2772 x 3071 | 9'1" x 10'11" |
| Bedroom 3 | 2772 x 2139 | 9'1" x 7'0" |



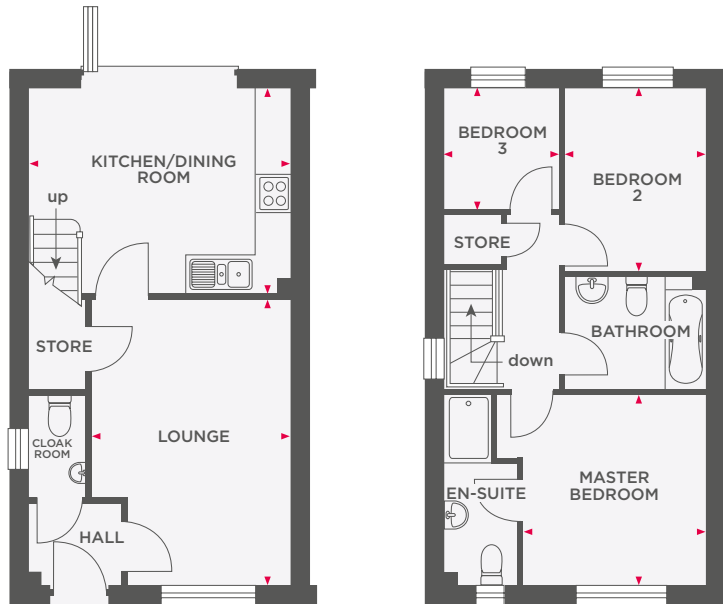
Wain Homes abides by the New Homes Quality Code, an independent industry code introduced to champion quality new homes and better consumer outcomes. Dimensions shown are internal finished dimensions which may vary as each home is built individually and the precise internal finishes may not always be the same. Please be aware that window and door positions could vary due to plot orientation. It is essential to view the working drawings with our Sales Executive for plot specific detail. Enquire for further information. Wain Homes Policy is continuous product and specification development. Every effort has been made to ensure the accuracy of the information provided in this leaflet at the date of publication but it may be subject to change without notice. Please consult with our Sales Executive to obtain the current specification. You should take appropriate steps to verify any information upon which you wish to rely. The sizes indicated are not intended to be used for carpet sizes, appliance spaces or items of furniture. Elevational treatments may vary to those shown. These particulars are intended for guidance only and their accuracy is not guaranteed. They do not constitute a contract, part of a contract or warranty. (September 2023)





THE LAUREL

3 BEDROOM HOME WITH PARKING



| | | |
|---------------------|-------------|---------------|
| Lounge | 3449 x 4922 | 11'3" x 16'1" |
| Kitchen/Dining Room | 4499 x 3550 | 14'9" x 11'7" |

| | | |
|----------------|-------------|---------------|
| Master Bedroom | 3164 x 3296 | 10'4" x 10'9" |
| Bedroom 2 | 2450 x 3652 | 7'11" x 10'4" |
| Bedroom 3 | 1977 x 2090 | 6'5" x 6'9" |



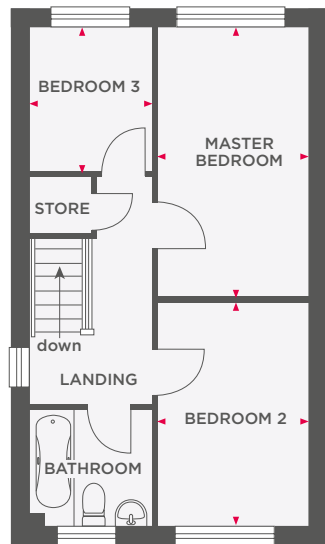
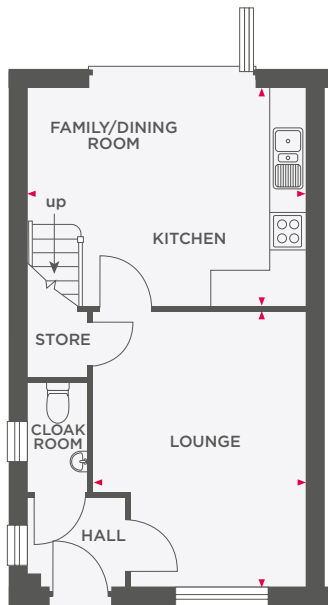
Wain Homes abides by the New Homes Quality Code, an independent industry code introduced to champion quality new homes and better consumer outcomes. Dimensions shown are internal finished dimensions which may vary as each home is built individually and the precise internal finishes may not always be the same. Please be aware that window and door positions could vary due to plot orientation. It is essential to view the working drawings with our Sales Executive for plot specific detail. Enquire for further information. Wain Homes Policy is continuous product and specification development. Every effort has been made to ensure the accuracy of the information provided in this leaflet at the date of publication but it may be subject to change without notice. Please consult with our Sales Executive to obtain the current specification. You should take appropriate steps to verify any information upon which you wish to rely. The sizes indicated are not intended to be used for carpet sizes, appliance spaces or items of furniture. Elevational treatments may vary to those shown. These particulars are intended for guidance only and their accuracy is not guaranteed. They do not constitute a contract, part of a contract or warranty. (September 2023)





THE LABURNUM

3 BEDROOM HOME WITH PARKING



| | | |
|---------------------|-------------|---------------|
| Lounge | 3339 x 4472 | 11'3" x 14'8" |
| Kitchen/Dining Room | 4499 x 3550 | 14'9" x 11'7" |

| | | |
|----------------|-------------|---------------|
| Master Bedroom | 2450 x 4371 | 8'0" x 14'4" |
| Bedroom 2 | 2450 x 3652 | 8'0" x 11'11" |
| Bedroom 3 | 1963 x 2332 | 6'5" x 7'7" |



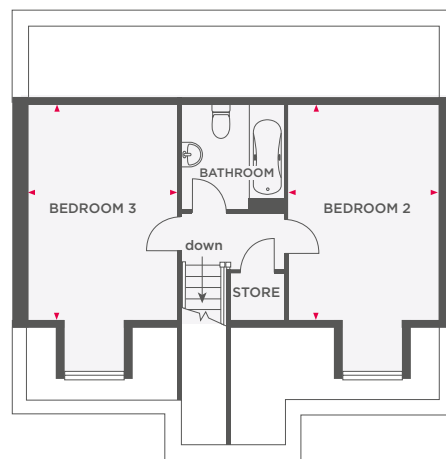
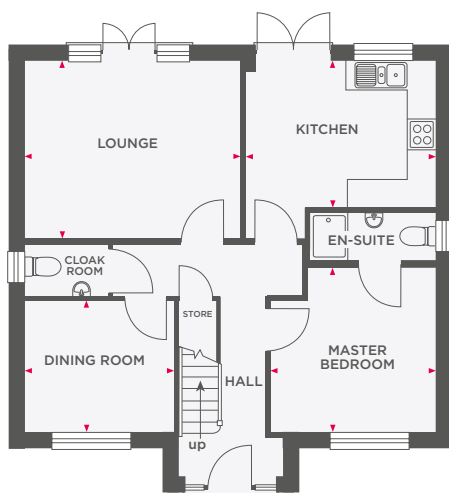
Wain Homes abides by the New Homes Quality Code, an independent industry code introduced to champion quality new homes and better consumer outcomes. Dimensions shown are internal finished dimensions which may vary as each home is built individually and the precise internal finishes may not always be the same. Please be aware that window and door positions could vary due to plot orientation. It is essential to view the working drawings with our Sales Executive for plot specific detail. Enquire for further information. Wain Homes Policy is continuous product and specification development. Every effort has been made to ensure the accuracy of the information provided in this leaflet at the date of publication but it may be subject to change without notice. Please consult with our Sales Executive to obtain the current specification. You should take appropriate steps to verify any information upon which you wish to rely. The sizes indicated are not intended to be used for carpet sizes, appliance spaces or items of furniture. Elevational treatments may vary to those shown. These particulars are intended for guidance only and their accuracy is not guaranteed. They do not constitute a contract, part of a contract or warranty. (September 2023)





THE MILTON

3 BEDROOM HOME WITH GARAGE



| | | |
|----------------|-------------|----------------|
| Lounge | 4413 x 3654 | 14'6" x 11'11" |
| Kitchen | 3912 x 3028 | 12'10" x 9'11" |
| Dining Room | 3059 x 2719 | 10'0" x 8'11" |
| Master Bedroom | 3410 x 3394 | 11'2" x 11'1" |

| | | |
|-----------|-------------|---------------|
| Bedroom 2 | 3084 x 4329 | 10'1" x 14'2" |
| Bedroom 3 | 3062 x 4329 | 10'0" x 14'2" |



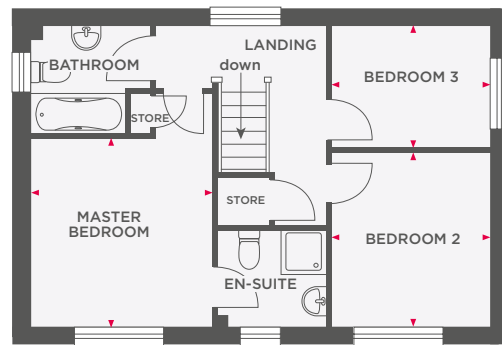
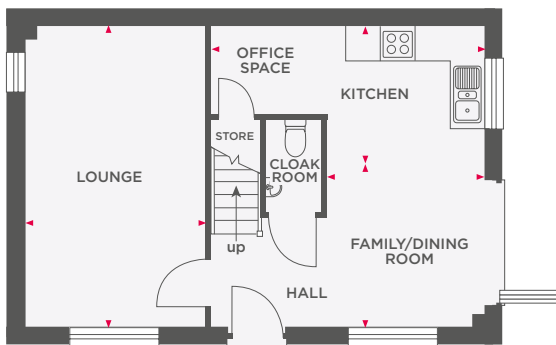
Wain Homes abides by the New Homes Quality Code, an independent industry code introduced to champion quality new homes and better consumer outcomes. Dimensions shown are internal finished dimensions which may vary as each home is built individually and the precise internal finishes may not always be the same. Please be aware that window and door positions could vary due to plot orientation. It is essential to view the working drawings with our Sales Executive for plot specific detail. Enquire for further information. Wain Homes Policy is continuous product and specification development. Every effort has been made to ensure the accuracy of the information provided in this leaflet at the date of publication but it may be subject to change without notice. Please consult with our Sales Executive to obtain the current specification. You should take appropriate steps to verify any information upon which you wish to rely. The sizes indicated are not intended to be used for carpet sizes, appliance spaces or items of furniture. Elevational treatments may vary to those shown. These particulars are intended for guidance only and their accuracy is not guaranteed. They do not constitute a contract, part of a contract or warranty. (September 2023)





THE WHITEBEAM

3 BEDROOM DETACHED HOME WITH PARKING



| | | |
|--------------------|-------------|---------------|
| Lounge | 3212 x 5297 | 10'6" x 17'4" |
| Kitchen | 4810 x 2428 | 15'8" x 7'10" |
| Dining/Family Room | 2750 x 2870 | 9'0" x 9'4" |

| | | |
|----------------|-------------|----------------|
| Master Bedroom | 3213 x 3327 | 10'5" x 10'10" |
| Bedroom 2 | 2772 x 3071 | 9'1" x 10'1" |
| Bedroom 3 | 2772 x 2139 | 9'1" x 7'0" |



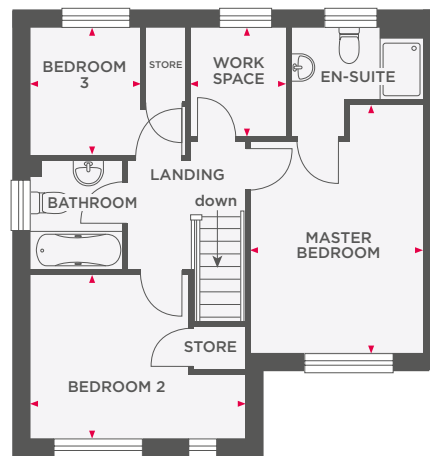
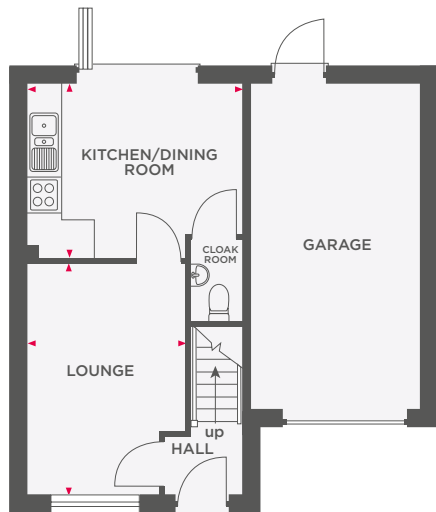
Wain Homes abides by the New Homes Quality Code, an independent industry code introduced to champion quality new homes and better consumer outcomes. Dimensions shown are internal finished dimensions which may vary as each home is built individually and the precise internal finishes may not always be the same. Please be aware that window and door positions could vary due to plot orientation. It is essential to view the working drawings with our Sales Executive for plot specific detail. Enquire for further information. Wain Homes Policy is continuous product and specification development. Every effort has been made to ensure the accuracy of the information provided in this leaflet at the date of publication but it may be subject to change without notice. Please consult with our Sales Executive to obtain the current specification. You should take appropriate steps to verify any information upon which you wish to rely. The sizes indicated are not intended to be used for carpet sizes, appliance spaces or items of furniture. Elevational treatments may vary to those shown. These particulars are intended for guidance only and their accuracy is not guaranteed. They do not constitute a contract, part of a contract or warranty. (September 2023)





THE WHITEBERRY

3 BEDROOM DETACHED HOME WITH INTEGRAL GARAGE



| | | |
|---------------------|-------------|----------------|
| Lounge | 2910 x 4238 | 9'6" x 13'10" |
| Kitchen/Dining Room | 3948 x 3197 | 12'11" x 10'5" |

| | | |
|----------------|-------------|----------------|
| Master Bedroom | 3175 x 4554 | 10'5" x 14'11" |
| Bedroom 2 | 3948 x 3001 | 12'11" x 9'10" |
| Bedroom 3 | 2015 x 2347 | 6'7" x 7'8" |
| Study | 1747 x 1983 | 5'8" x 6'6" |



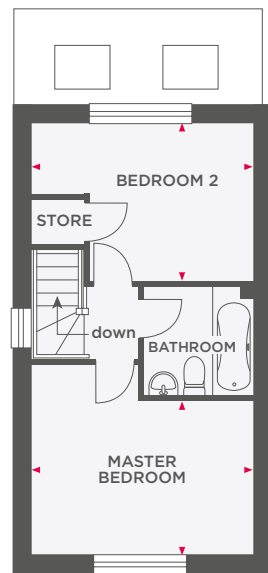
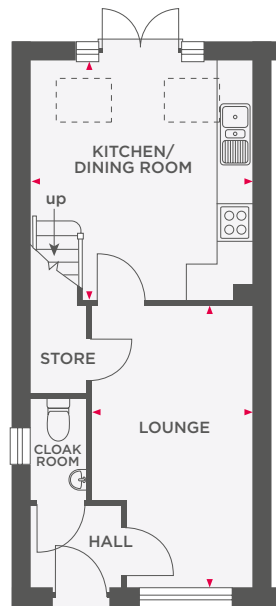
Wain Homes abides by the New Homes Quality Code, an independent industry code introduced to champion quality new homes and better consumer outcomes. Dimensions shown are internal finished dimensions which may vary as each home is built individually and the precise internal finishes may not always be the same. Please be aware that window and door positions could vary due to plot orientation. It is essential to view the working drawings with our Sales Executive for plot specific detail. Enquire for further information. Wain Homes Policy is continuous product and specification development. Every effort has been made to ensure the accuracy of the information provided in this leaflet at the date of publication but it may be subject to change without notice. Please consult with our Sales Executive to obtain the current specification. You should take appropriate steps to verify any information upon which you wish to rely. The sizes indicated are not intended to be used for carpet sizes, appliance spaces or items of furniture. Elevational treatments may vary to those shown. These particulars are intended for guidance only and their accuracy is not guaranteed. They do not constitute a contract, part of a contract or warranty. (September 2023)





THE OYSTERWOOD

2 BEDROOM HOME WITH PARKING



| | | |
|---------------------|-------------|---------------|
| Lounge | 2830 x 4959 | 9'3" x 16'3" |
| Kitchen/Dining Room | 3880 x 4188 | 12'8" x 13'8" |

| | | |
|----------------|-------------|--------------|
| Master Bedroom | 3880 x 2687 | 12'8" x 8'9" |
| Bedroom 2 | 3880 x 2758 | 12'8" x 9'0" |



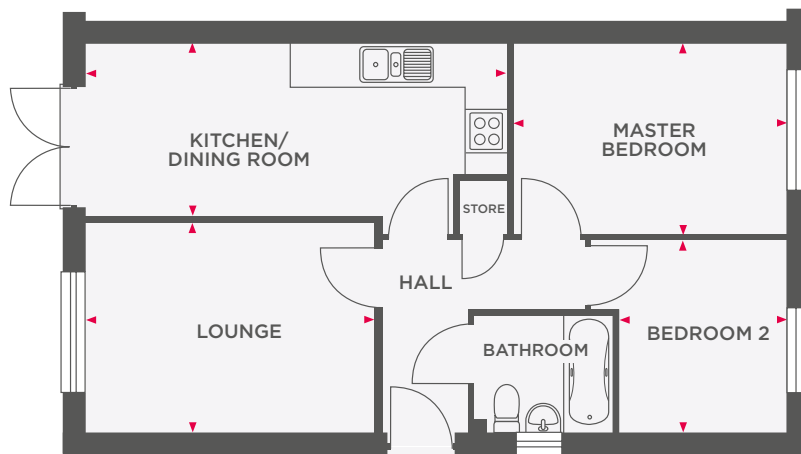
Wain Homes abides by the New Homes Quality Code, an independent industry code introduced to champion quality new homes and better consumer outcomes. Dimensions shown are internal finished dimensions which may vary as each home is built individually and the precise internal finishes may not always be the same. Please be aware that window and door positions could vary due to plot orientation. It is essential to view the working drawings with our Sales Executive for plot specific detail. Enquire for further information. Wain Homes Policy is continuous product and specification development. Every effort has been made to ensure the accuracy of the information provided in this leaflet at the date of publication but it may be subject to change without notice. Please consult with our Sales Executive to obtain the current specification. You should take appropriate steps to verify any information upon which you wish to rely. The sizes indicated are not intended to be used for carpet sizes, appliance spaces or items of furniture. Elevational treatments may vary to those shown. These particulars are intended for guidance only and their accuracy is not guaranteed. They do not constitute a contract, part of a contract or warranty. (September 2023)





THE TURNER

2 BEDROOM BUNGALOW WITH PARKING



| | | |
|---------------------|-------------|----------------|
| Lounge | 4228 x 3060 | 13'10" x 10'0" |
| Kitchen/Dining Room | 6149 x 2487 | 20'2" x 8'1" |
| Master Bedroom | 4010 x 2750 | 13'1" x 9'0" |
| Bedroom 2 | 2460 x 2797 | 8'0" x 9'2" |



Wain Homes abides by the New Homes Quality Code, an independent industry code introduced to champion quality new homes and better consumer outcomes. Dimensions shown are internal finished dimensions which may vary as each home is built individually and the precise internal finishes may not always be the same. Please be aware that window and door positions could vary due to plot orientation. It is essential to view the working drawings with our Sales Executive for plot specific detail. Enquire for further information. Wain Homes Policy is continuous product and specification development. Every effort has been made to ensure the accuracy of the information provided in this leaflet at the date of publication but it may be subject to change without notice. Please consult with our Sales Executive to obtain the current specification. You should take appropriate steps to verify any information upon which you wish to rely. The sizes indicated are not intended to be used for carpet sizes, appliance spaces or items of furniture. Elevational treatments may vary to those shown. These particulars are intended for guidance only and their accuracy is not guaranteed. They do not constitute a contract, part of a contract or warranty. (September 2023)

Wain
HOMES